

# Installation Guide for the CHEOPS Scheduling Feasibility Checker (SFC)

Issue: 1.1

Date: 23 Jul. 2019

Page: 1 / 5

---

To use the CHEOPS Scheduling Feasibility Checker (SFC) you first have to install and configure the software. This process is described in the following subsection. You will need a total of 15 GB of disk space to install the SFC. Yes, 15 GB ;-)

After you completed the installation process the SFC is ready to be used.

**IMPORTANT:** While using the SFC your computer needs to be connected to internet. The SFC client application needs to connect to the SFC server application running inside the ESA network.

## Installing the Scheduling Feasibility Checker (SFC) client application

Installing the CHEOPS SFC client application is a two-step process. First, you need to download and install the VirtualBox software. As a second step you must download and configure the SFC virtual image.

### Installing VirtualBox

Download and install VirtualBox for your operating system (Windows, OS X, Linux or Solaris):  
<https://www.virtualbox.org/wiki/Downloads>

**Warning for OS X High Sierra (10.13) users:** You may experience problems when installing VirtualBox. Please refer to the following post to fix the problem:  
<https://github.com/docksal/docksal/issues/417>

**Warning for Ubuntu users:** If you are using Ubuntu 16 or higher, you may experience problems related to using unsigned kernel modules. For further details, please refer to the 'Frequently Asked Questions':  
<https://www.cosmos.esa.int/web/cheops-guest-observers-programme/faq>

### Importing and configuring the SFC virtual image

1. Download the virtual image containing the Feasibility Checker. The download of the 2.9 GB virtual image may take a while.

```
ftp cheops_fc@ssh.esac.esa.int:/cheopsfcvm05.ova
```

After executing the command you will be asked to provide a password. This password is available via the following web page:

# Installation Guide for the CHEOPS Scheduling Feasibility Checker (SFC)

Issue: 1.1

Date: 23 Jul. 2019

Page: 2 / 5

---

<https://www.cosmos.esa.int/web/cheops-guest-observers-programme/ao-1>

in the section headed Tools and Supporting Documentation → Scheduling Feasibility Checker → Details of FTP site

Please note that the access to this URL is restricted to registered users only.

In case a GUI based FTP program like Filezilla is used, then connect with:

Host: ssh.esac.esa.int

Username: cheops\_fc

Password: <as published - see above>

Once logged in via the cheops\_fc account, you are in the folder where the file cheopsfcvm05.ova can be downloaded.

In case you do not have a stand-alone FTP client available, you may issue the download command via a web browser that also supports FTP, for example Firefox, Chrome, Internet Explorer, etc. Please note, Safari under OS/X does not support this.

When using a web browser, use the following URL:

ftp://cheops\_fc@ssh.esac.esa.int/cheopsfcvm05.ova

A popup will appear where you can enter the username and password.

2. Start the VirtualBox software.
3. Open the 'File' menu item and select 'Import appliance'.

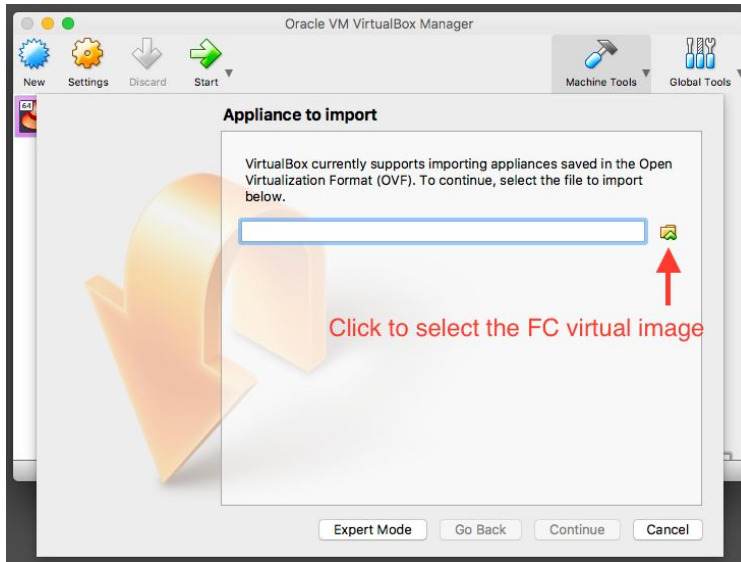
# Installation Guide for the CHEOPS Scheduling Feasibility Checker (SFC)

Issue: 1.1

Date: 23 Jul. 2019

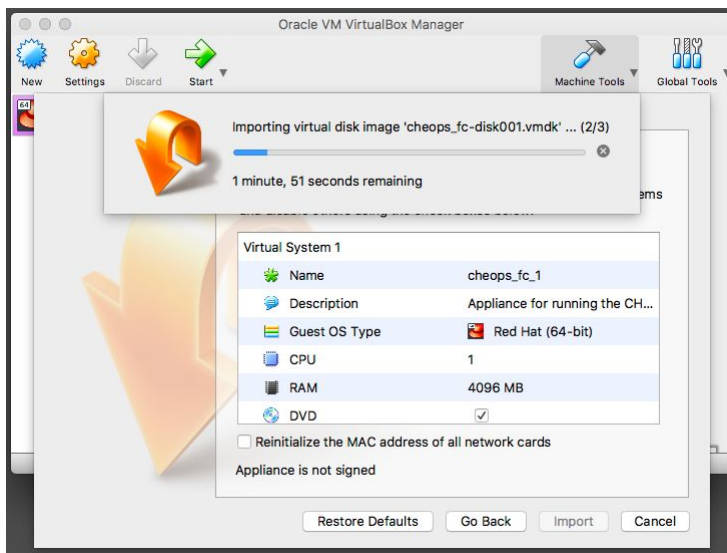
Page: 3 / 5

4. Enter the location of the SFC virtual image on your computer.



5. Click on 'Continue'.

6. Click on 'Import'.



The import may take a while to complete.

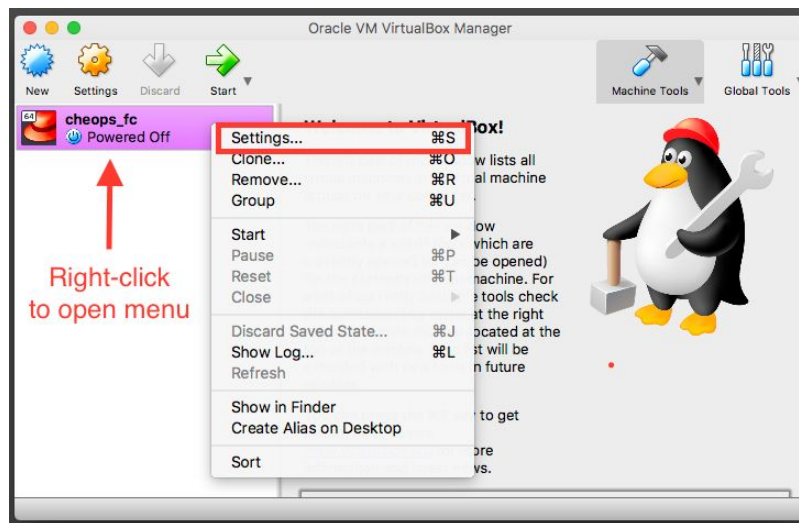
# Installation Guide for the CHEOPS Scheduling Feasibility Checker (SFC)

Issue: 1.1

Date: 23 Jul. 2019

Page: 4 / 5

7. Define a shared folder in order to easily transfer files between your computer (host) and the SFC virtual machine (guest):
  - a. In the VirtualBox main window, open the guest machine's settings by right clicking on the SFC virtual image in the left panel of the main window.
  - b. Open the 'Settings'.



- c. Click on 'Shared Folders', then click on the "plus" icon to add a folder to be shared between the guest and the host machine. Make sure to check the "Auto-mount" checkbox. The folder will be mounted as a subdirectory of /media in the guest machine. Note: this folder should be used to provide the input data (Observation Requests) for the SFC - see below.

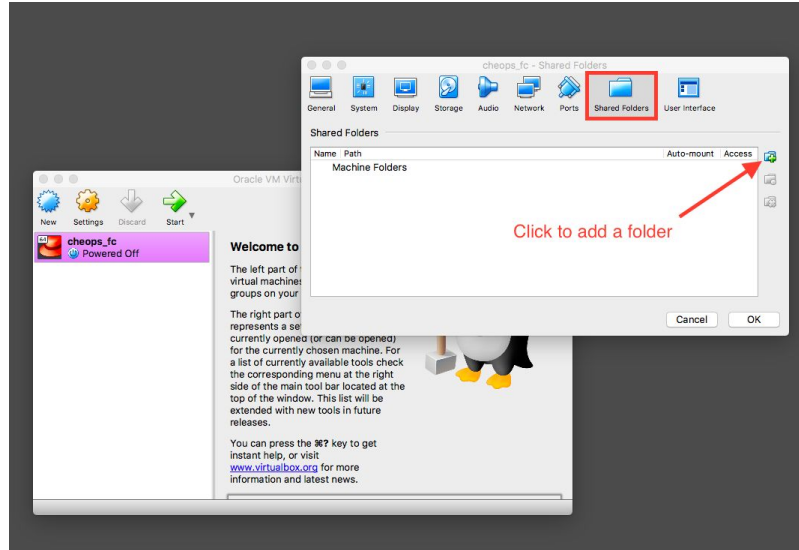
# Installation Guide for the CHEOPS Scheduling Feasibility Checker (SFC)

Issue: 1.1

Date: 23 Jul. 2019

Page: 5 / 5

---



d. Close the Settings dialog.

The SFC virtual image is now ready to be used.

---

End of document