

Korea-Giant Magellan Telescope Science Operation

Soung-Chul Yang, Ji Yeon Seok, Yun-Kyeong Sheen, Ho-Gyu Lee, Jae-Joon Lee, and Narae Hwang
Korea Astronomy & Space Science Institute (KASI), Daejeon, Republic of Korea

The Korea-Giant Magellan Telescope Science Operation (K-GMT SO) provides a variety of observational facilities to Korea Astronomy Society. Our main goal is to improve the community scientific capability in the field of observational astronomy and astrophysics in preparation for the upcoming Giant Magellan Telescope era.

4 Main Components of the K-GMT SO

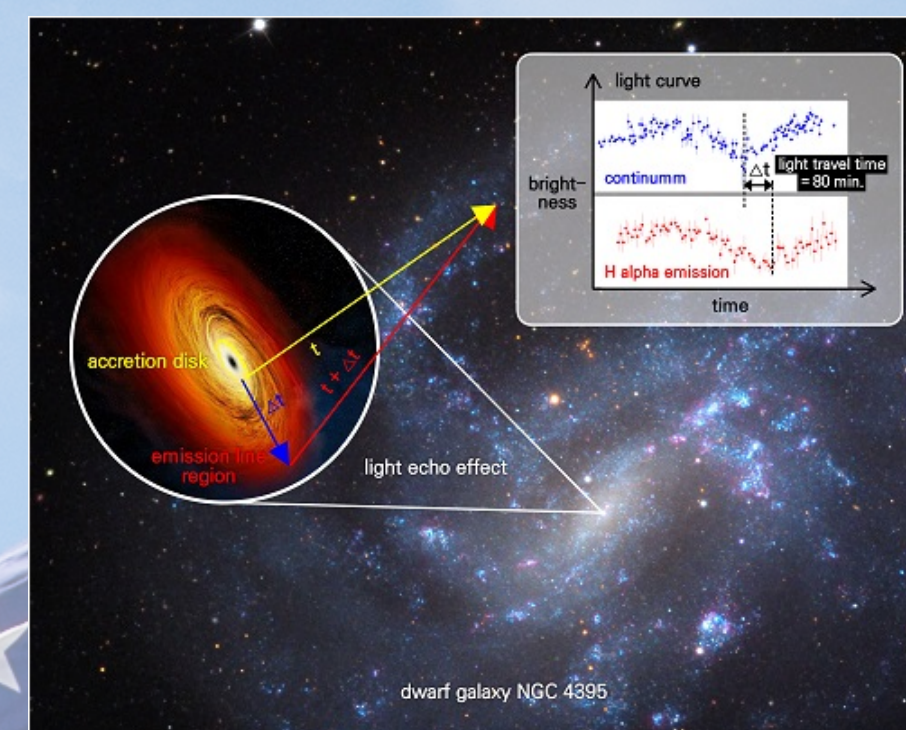
Korea Gemini Office

KGO supports local Gemini Users in the all phase of astronomical observing cycle, from proposal preparation through data access.

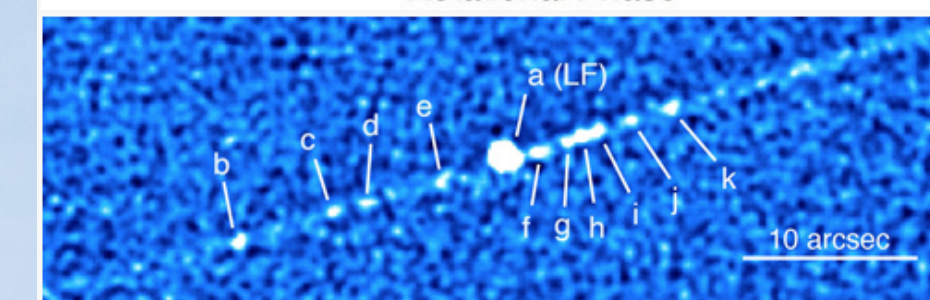
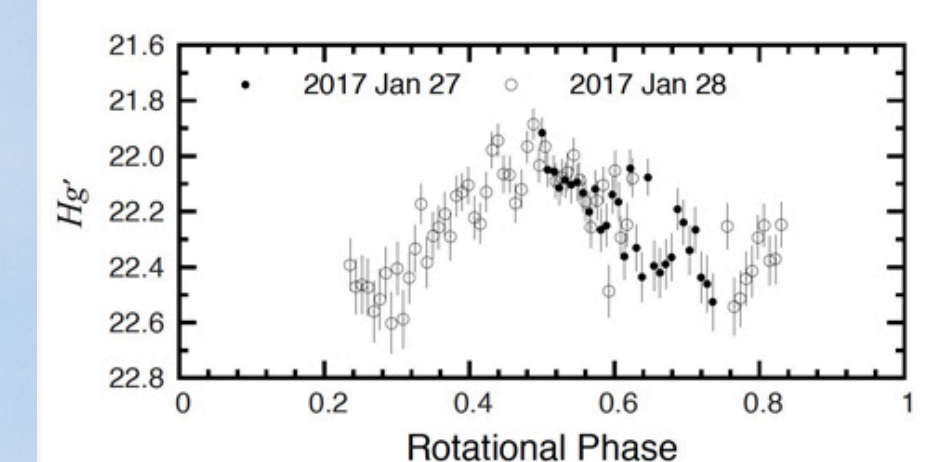
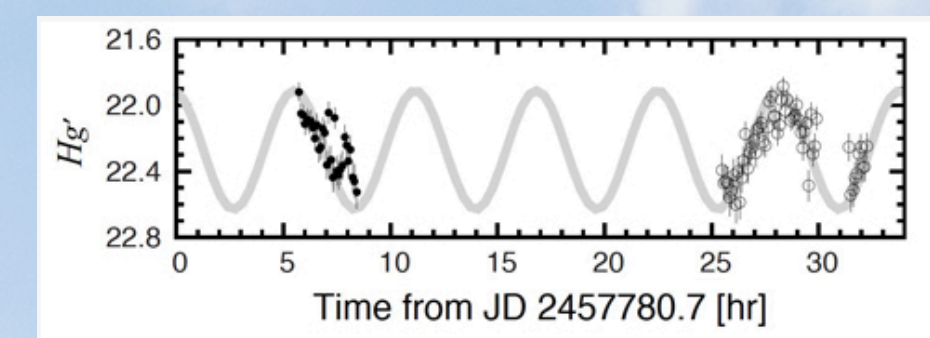


- Call for Proposals & Phase I Support
- Korean Time Allocation Committee
- Phase II Support (Preparation of Observing Tool)
- Help Desk

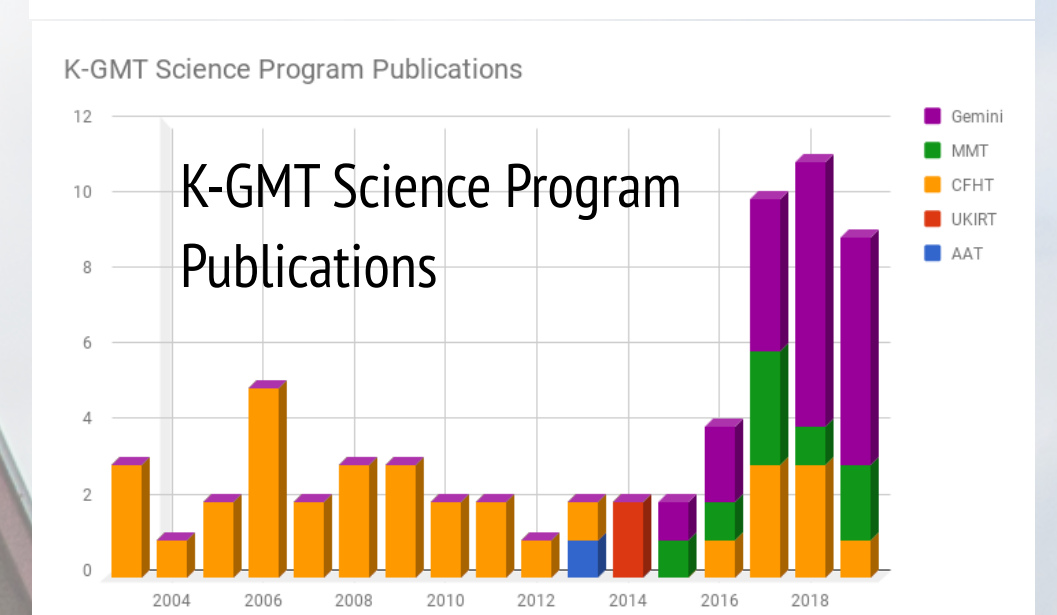
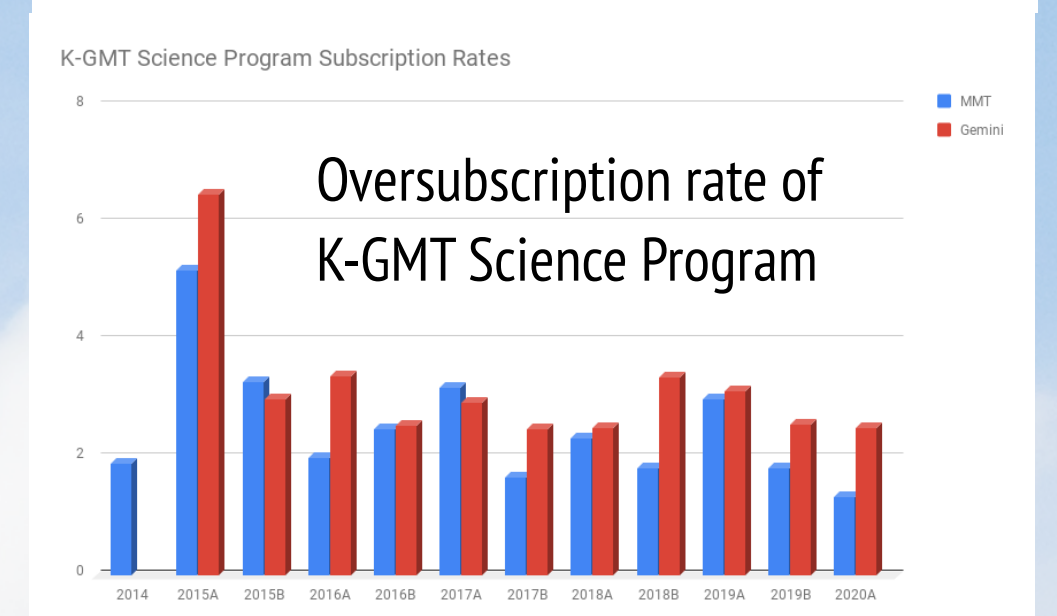
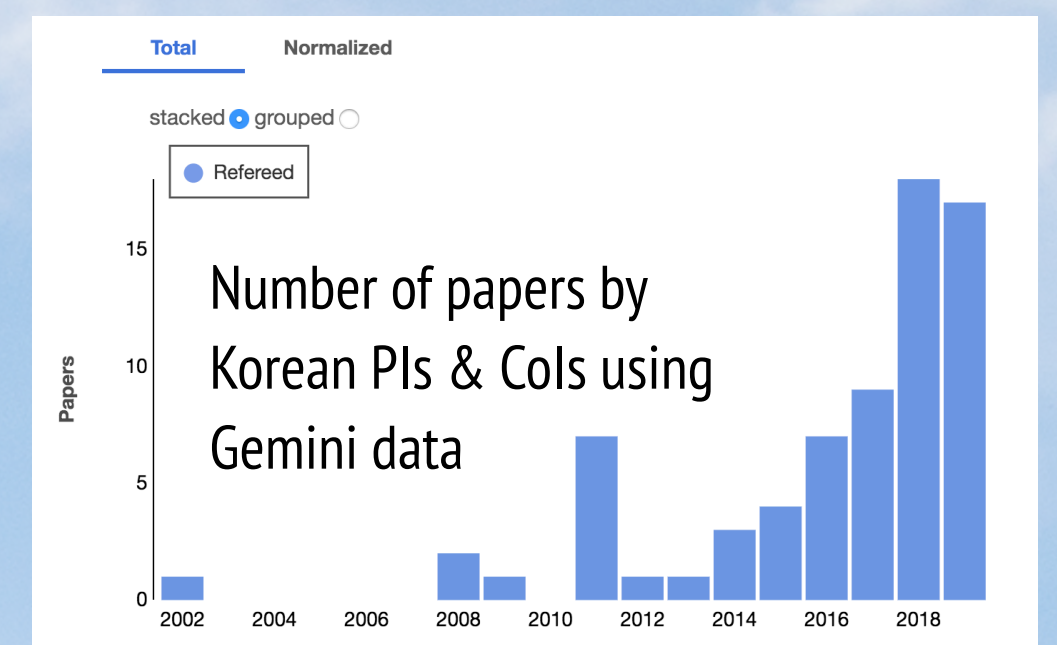
Stats for K-GMT Science Programs & Scientific Highlights



An international team of researchers led by astronomer Jong-Hak Woo at Seoul National University obtained deep spectroscopy from Gemini, combined with light echo measurements from multiple observatories, to confirm a black hole "missing link." They have found strong evidence for an elusive intermediate mass black hole at the core of a small (dwarf) galaxy. This groundbreaking work is published on June 10 on Nature Astronomy (2019, Vol. 3, p755-759)



A team of Korean astronomers uses imaging from the Gemini Multi-Object Spectrograph (GMOS) on Gemini North to characterize the rotation of active asteroid P/2010 A2's largest fragment. The observations show that this faint and tiny (about the size of an American football field) asteroid, which underwent a mass ejection episode, is slowly rotating, indicative of an impact fragmentation rather a rotational breakup.



Science Meetings & Workshops

20th Anniversary and Beyond

Gemini Observatory invites its international user community to Seoul, Korea, for a celebration of 20 years of forefront access to the entire sky, and a preview of the even more exciting things to come. Hosted by the partnership's newest member, this special Science Meeting will feature the latest scientific results from Gemini, news on current instrumentation projects, updates on operations developments, fabulous dining, and lively discussion of Gemini's strategic plans for the coming decade. Come join us in Seoul!

June 21-25, 2020
Seoul, Korea

For information and registration:
www.gemini.edu/gsm2020

- Gemini Korean Users Meeting
- Gemini Science Meeting (GSM) 2020

Education & Training

K-GMT SO provides opportunities for high-level educations and training programs to young Korean astronomers.



- KASI-Arizona Fellowship
- KASI-Carnegie Fellowship
- K-GMT Summer School

Science Development for Multi-Messenger Era

K-GMT SO is working closely with the Korean-SPHEREx team and Korean LSST PIs in KASI to prepare next generation science projects for the era of multi-messengers & large survey facilities.