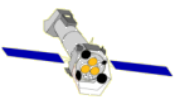


# Pipeline Status

Pedro Rodríguez on behalf of PPS team

XMM-Newton Users' Group Meeting  
ESAC, May 11, 2017

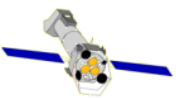


# Outline



- Highlights of latest release
- Current development activities
- Under Analysis

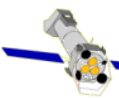




## Highlights of latest release

- Based on SAS16
- Source detection in slew exposures
- Update method to define background region for MOS source products
- Source and background regions to extract timeseries and spectra in a PNG
- Time bin in RGS lightcurves adjusted according to mean rate.
- Single plot file with all X-rays light curves for every source
- SSO observations processed with coordinates referred to the target location

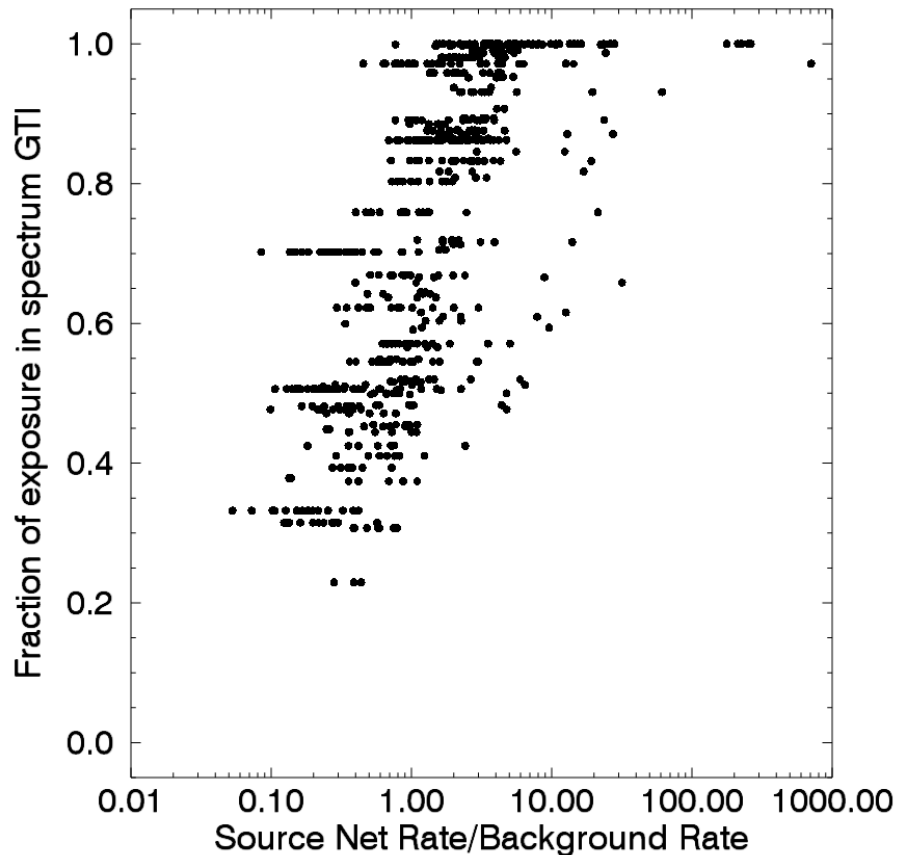




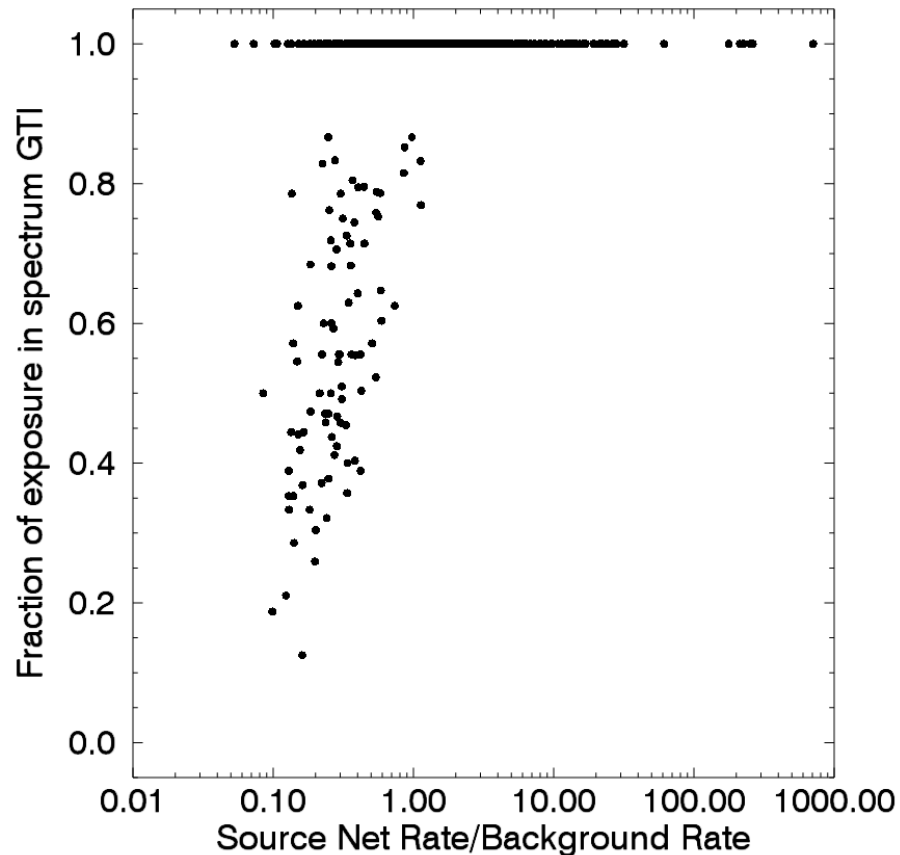
# Optimized flaring background filtering per source

32 Observations ; 672 EPIC spectra with >100 counts

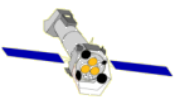
Minimize source detection threshold



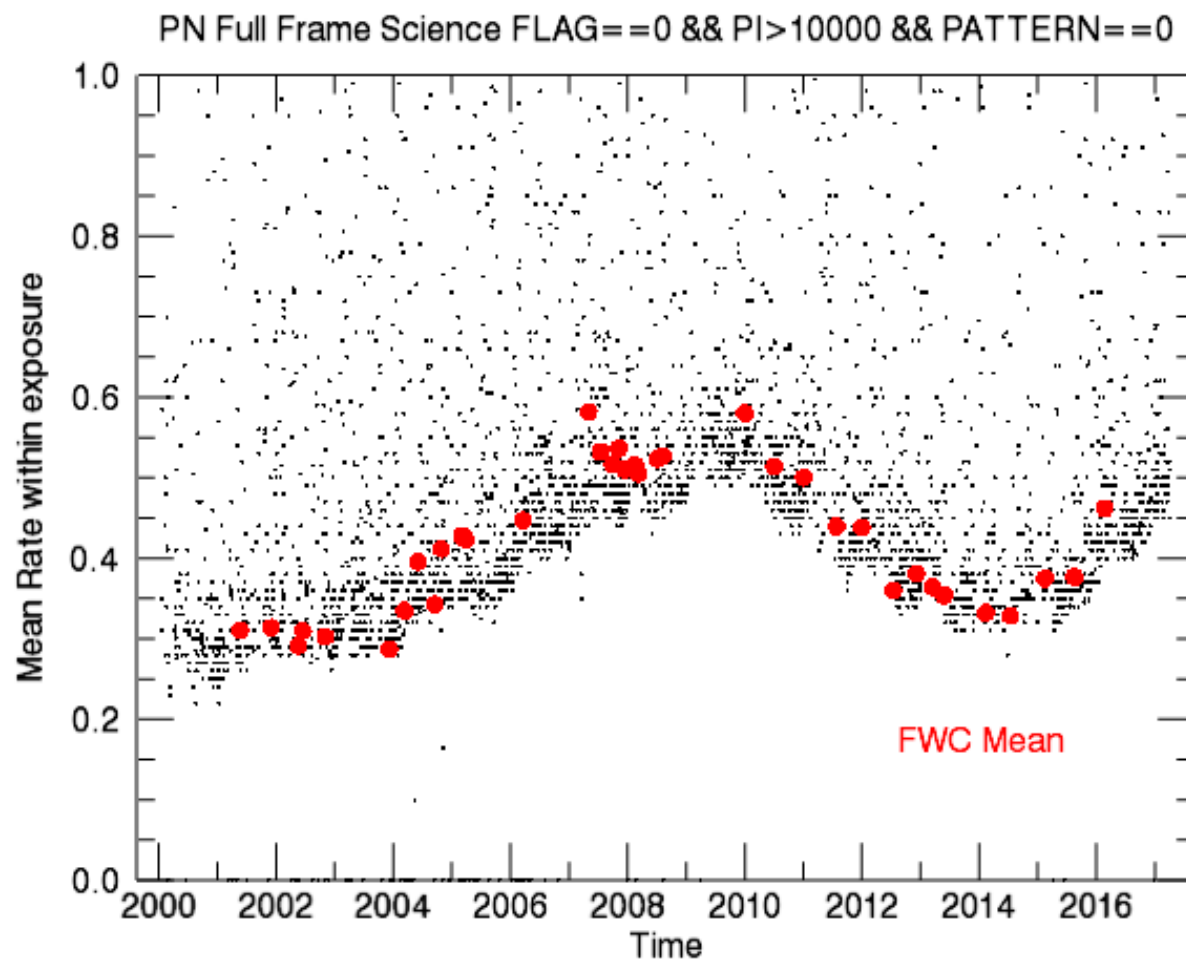
Maximize source spectrum S/N

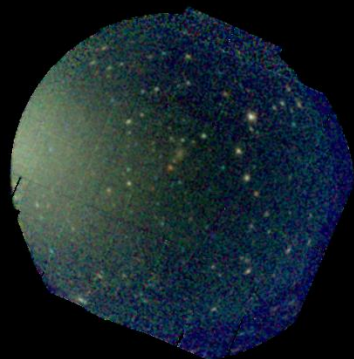
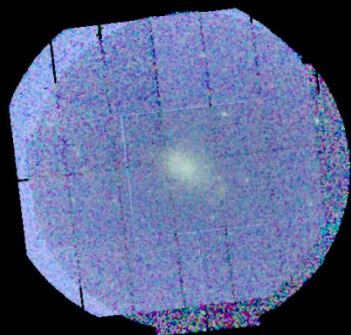
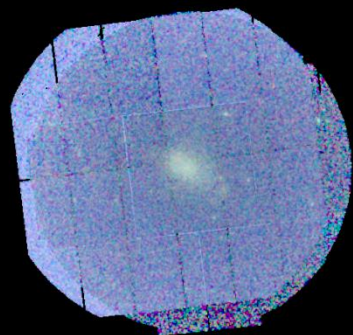
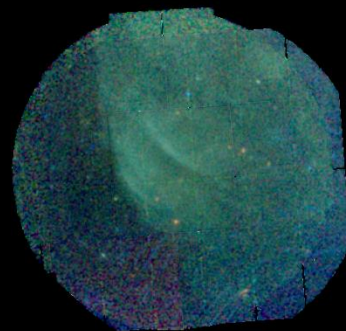


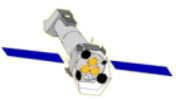




# Instrumental background







# Under Analysis

- Treatment of noisy MOS CCDs
- Model independent counts to flux conversion factors
- Production of “fluxed” images
- Response matrices for piled-up sources
- Source detection on stacked observations

