

COMMUNITY SUPPORT AND MISSION PLANNING

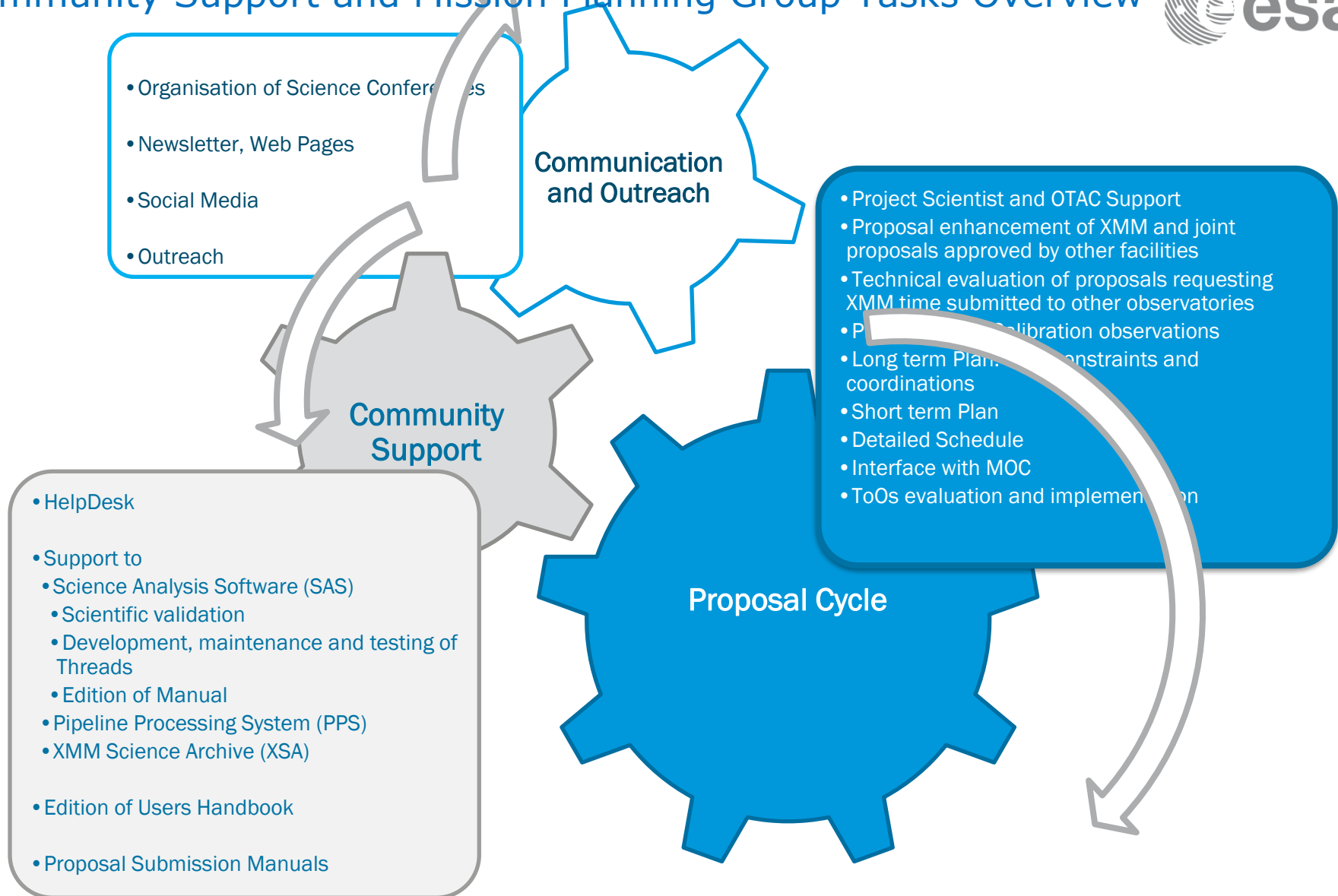
XMM-NEWTON USERS' GROUP MEETING #22

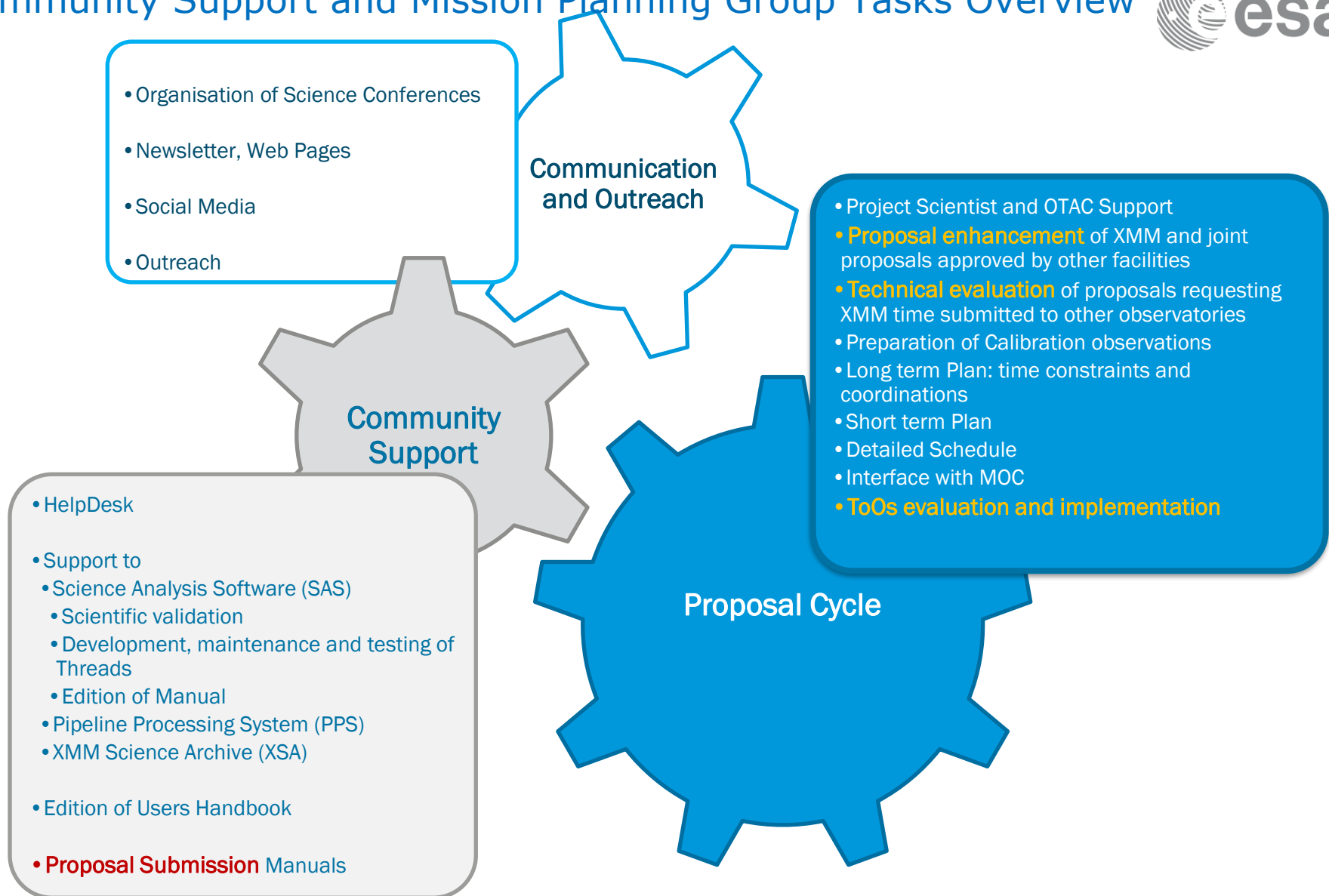
ROSARIO GONZÁLEZ-RIESTRA

XMM-NEWTON SCIENCE OPERATIONS CENTRE

ON BEHALF OF THE XMM-SOC COMMUNITY SUPPORT AND SCIENTIFIC PLANNING TEAM

Community Support and Mission Planning Group Tasks Overview





TECHNICAL EVALUATION (FEASIBILITY, VISIBILITY, DUPLICATIONS...)

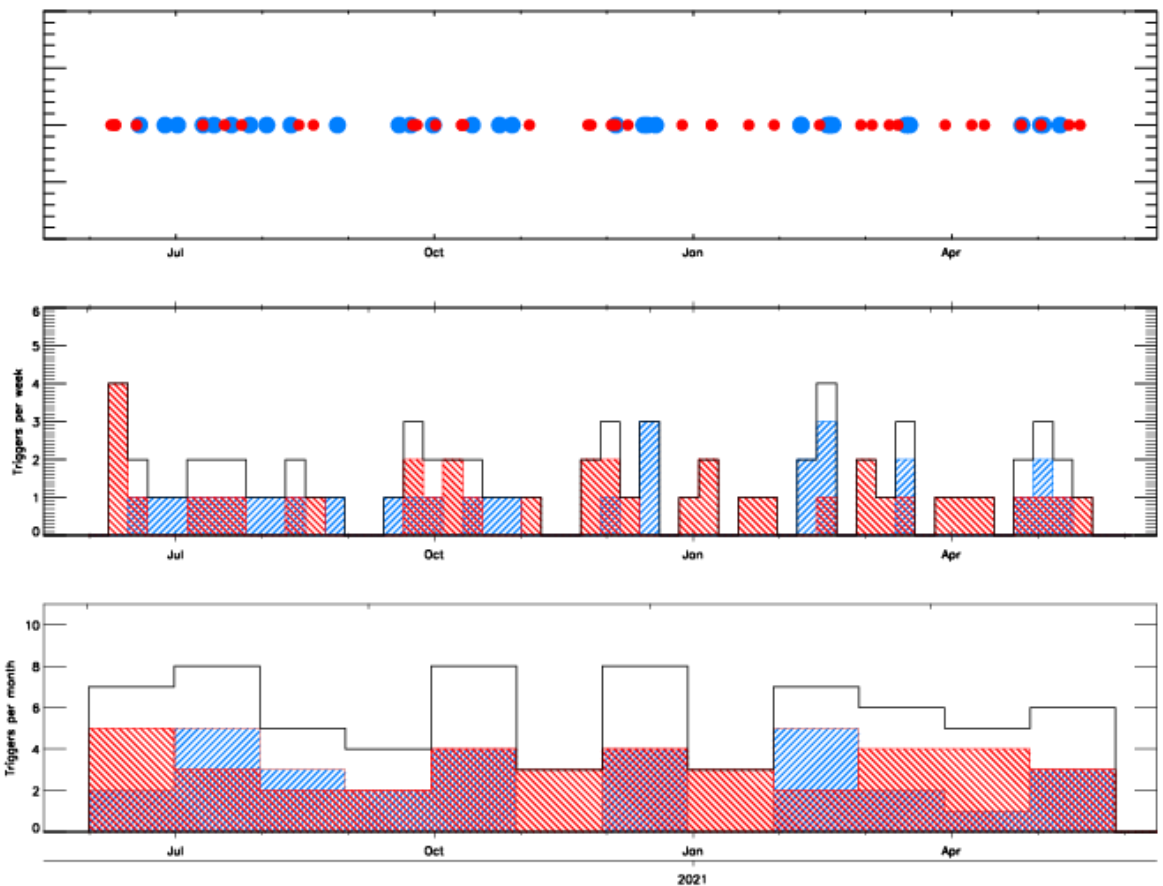
	# of proposals
NuSTAR A07	65
HST Cycle 29	12
Chandra Cycle 23	10
MAGIC Cycle 16	6
INTEGRAL A019	4
NRAO 21B	2

ENHANCEMENT (OBSERVATIONS OPTIMISATION)

	# of proposals
XMM	175
NuSTAR A07	25
INTEGRAL A018	6
MAGIC Cycle 16	6
Chandra Cycle 22	3
HST Cycle 22	2
NRAO 21B	1

25% of the proposals to enhance come from other facilities

Planning and Scheduling: Targets of Opportunity



One trigger every 5 days

every 11 days anticipated
every 9 days un-anticipated

1-2 trigger per week

5 triggers per month

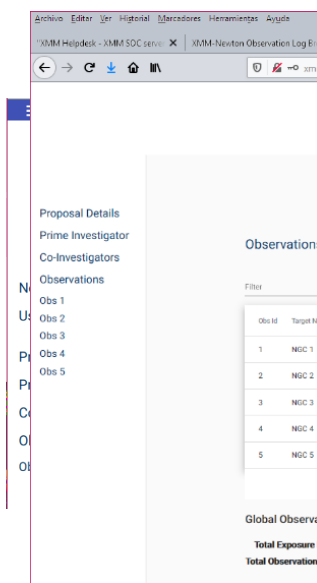
XIPS

XMM-NEWTON INTERFACE FOR PROPOSAL SUBMISSION



NEW PHASE I PROPOSAL SUBMISSION SYSTEM (REPLACES HRPS)

- NEW INTERFACE
- LOGIN VIA ESA COSMOS ACCOUNT
- ALLOWS TO COPY PROPOSALS
(IN THE FUTURE ALSO TO RE-CYCLE PROPOSALS AND TARGETS FROM PREVIOUS AOs)
- UPLOAD OF A LIST OF TARGETS
- TARGETS NAMES RESOLVED BY SIMBAD/NED
- NEW PDF FORMAT



Proposal -174 for XMM-Newton Observations AO-21

Cover Page

Prime Investigator	Rosario Gonzalez-Riestra	Institute	ESAC
Address	Madrid	City	Madrid
Email	rosario.gonzalez@sciops.esa.int	Tel.	+34 99 999 999
		Country	SPAIN

Prime Investigator		Institute	
Address		City	
Email		Tel.	
		Country	

Prime Investigator		Institute	
Address		City	
Email		Tel.	
		Country	

Prime Investigator		Institute	
Address		City	
Email		Tel.	
		Country	

Proposal Title

My Proposal 2

Proposal Category

Active Galactic Nuclei, Quasars, BL-Lac Objects and Tidal Disruption Events

Proposal Type	OM Filter Wheel Rot.	Large Prog.	EPIC Extra Burst
Guest Observer	N	N	N

Is this proposal re-submitted from previous AOs?

N

Proposal Continued

N

Joint Proposal Information

Chandra (ks):	HST (orbit):	NuSTAR (ks):
VLT (hours):	SWIFT (ks):	INTEGRAL (ks):
MAGIC (ks):	NRAO/GBO (hours):	H.E.S.S (hours):

Abstract

This is a test proposal

CONTENT

- ODF/PPS of **14,340** pointed observations
- **957,300** EPIC PPS sources
- **12,706,000** OM PPS sources
- **63,000** Slew Survey PPS sources
- SDF of \sim **4,800** Slew Survey observations
- **849,991 4XMM-DR10 EPIC Catalogue detections (>575,000 unique sources)**
- **335,812 4XMM-DR10s EPIC Stacked Catalogue sources**
- **8,863,922 OM Catalogue sources (OM-SUSS5.0 catalogue)**
- 72,352, Slew Survey Catalogue sources (XMMSL2)
- Radiation Monitor files up to revolution 3000
- Ancillary information: proposal information, publications (**> 6900**)

3 NEW XSA RELEASES SINCE LAST MEETING

MAIN NEW FUNCTIONALITIES

- Ingestion and display of the 4XMM-DR10 and 4XMM-DR10s catalogues
- Ingestion display and download of SED plots produced by SSC for 4XMM-DR10 sources
- Ingestion and display of the OM SUS5.0 catalogue
- Ingestion of new Pipeline products
- **Generation of the Upper Limits Database, and access from XSA**
- **Modification of the Multi-object search functionality, including Upper Limits DB search option**
- Visualization of RGS spectra of moving targets in their reference frame
- Expansion of XMM-Newton Astroquery module with more functionalities
- More direct download AIO functionalities (level=SPECTRA, LIGHT_CURVE, etc)

XMM-Newton Science Archive: Upper Limits DB access

Object Search

XMM-Newton Science Archive

HOME SEARCH COMMAND & URL ACCESS INTERACTIVE ANALYSIS TAP QUERIES ASTROQUERY ADMIN ONLY (XAT) Basket

XMM-Newton Science Archive Search

Single Object Search Multi-Object Search Search Clear

☒ Name ☐ Equatorial ☐ Galactic

Target in ☒ Field Of View ☐ Circle ☐ Box

Name ☒ Resolve ☐ Given by Proposer

ESO 195- G 017 resolved by Sesame

Filters for Observation, Proposal and Catalogue Searches

Display options

Slew Observations Catalogues/Upper Limits

Slew Observations
Slew Obs. Segments
Slew Publications

☒ 4XMM-DR10 Filtered Catalogue
☒ 4XMM-DR10s Filtered Stack Cat
☐ OM Source Catalogue
☒ Slew Survey Clean Catalogue
☒ Upper Limits

Clear

XMM-Newton Science Archive

HOME SEARCH COMMAND & URL ACCESS INTERACTIVE ANALYSIS TAP QUERIES ASTROQUERY ADMIN ONLY (XAT) Basket

Back to Search Close all X

Results #1 X

OBSERVATIONS (0) X 4XMM-DR10 CAT (0) X 4XMM-DR10s STACKED CAT (0) X SLEW SOURCE CAT (0) X **UPPER_LIMITS (2) X**

Columns

Obs.ID	RA	DEC	Obs Type	Start Date	End Date	Rate B8 sigma2	Flux B8 sigma2	Rate B7 sigma2	Flux B7 sigma2	Rate B6 sigma2	Flux B6 sigma2
9357800004	13.9363073749	-50.4648739786	slew	2019-06-24T03:16:45	2019-06-24T04:58:52	< 1.04E00	< 3.27E-12	< 1.19E00	< 1.08E-11	< 1.04E00	< 3.27E-12
9082200003	13.9363073749	-50.4648739786	slew	2004-06-05T04:38:28	2004-06-05T05:15:21	< 5.01E00	< 1.57E-11	< 5.81E00	< 5.29E-11	< 5.01E00	< 1.57E-11

1 of 1 Page size: 100

Displaying 1-2 of 2

COPYRIGHT © EUROPEAN SPACE AGENCY. ALL RIGHTS RESERVED. V13.1-OPER (12-04-2021)

-> no pointed data
-> upper limit from slew survey

XMM-Newton Science Archive: Multi-object search

The screenshot displays the XMM-Newton Science Archive search interface. The top navigation bar includes links for HOME, SEARCH, COMMAND & URL ACCESS, INTERACTIVE ANALYSIS, TAP QUERIES, ASTROQUERY, and ADMIN ONLY (XAT). A search bar is present with a 'Go to Results' button. Below the navigation bar, the 'XMM-Newton Science Archive Search' section is visible, featuring a 'Single Object Search' and 'Multi-Object Search' toggle. The 'Multi-Object Search' is selected, and the search criteria are set to 'Name' and 'Circle'. A file named 'RaDecTestUL.csv' is selected for the search. The search results are displayed in a table with columns for ObsID, RA, DEC, Obs Type, Start Date, End Date, Rate (R), Signal (R), Flux (R), Instrument, Filter, and DI. The table shows a list of observations with their respective parameters. A red box highlights the 'Display all search results together' button, and another red box highlights the 'Display results per object' button. The search results are displayed in a table with columns for RA (Deg), DEC (Deg), Status, and Results. The table shows a list of results with their respective parameters.

Display all search results together

Display results per object

PLANS FOR FUTURE RELEASES

- Ingestion and display of new catalogues:
 - 4XMM-DR11
 - 4XMM-DR11s
- Improved display of the Upper Limit results
- Improved visualization of the new PPS products
- Additional options for the RGS spectra visualizer
- Visualisation of EPIC spectra and light curves with the “spectra” visualizer
- Upgrade of the XMM-Newton Astroquery module

Thanks!

XMM-Newton Community Support and Mission Planning Group
aka User Support Group (USG)

Lucia Ballo

Ignacio de la Calle

Jacobo Ebrero

Felix Fürst

Rosario González

Nora Loiseau

Simone Migliari

Pedro Rodríguez

Celia Sánchez

Laura Tomás