

Novae as supersoft X-ray sources in Andromeda

- The Joy of Painting -

Martin Henze

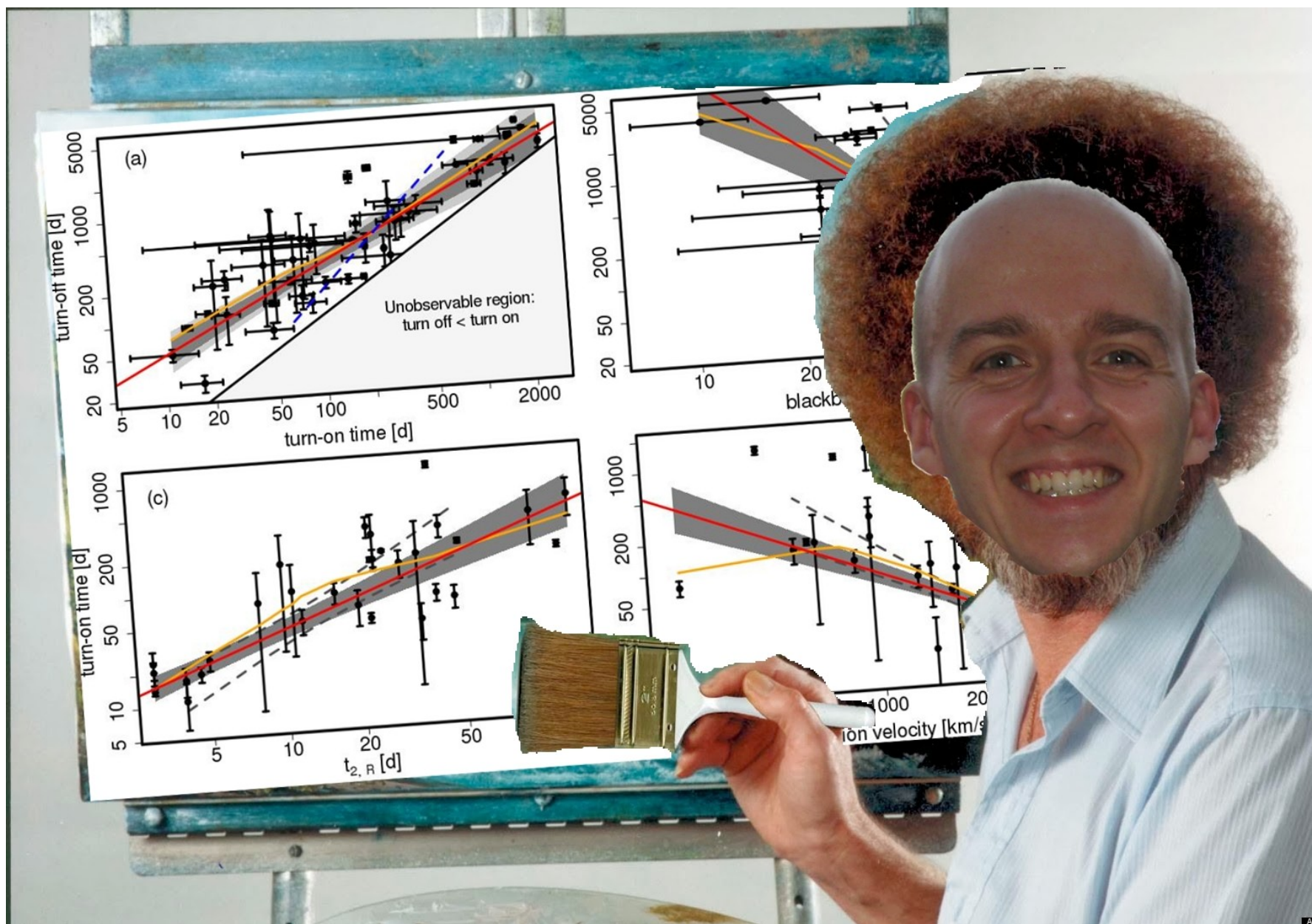


for the M31 nova monitoring collaboration

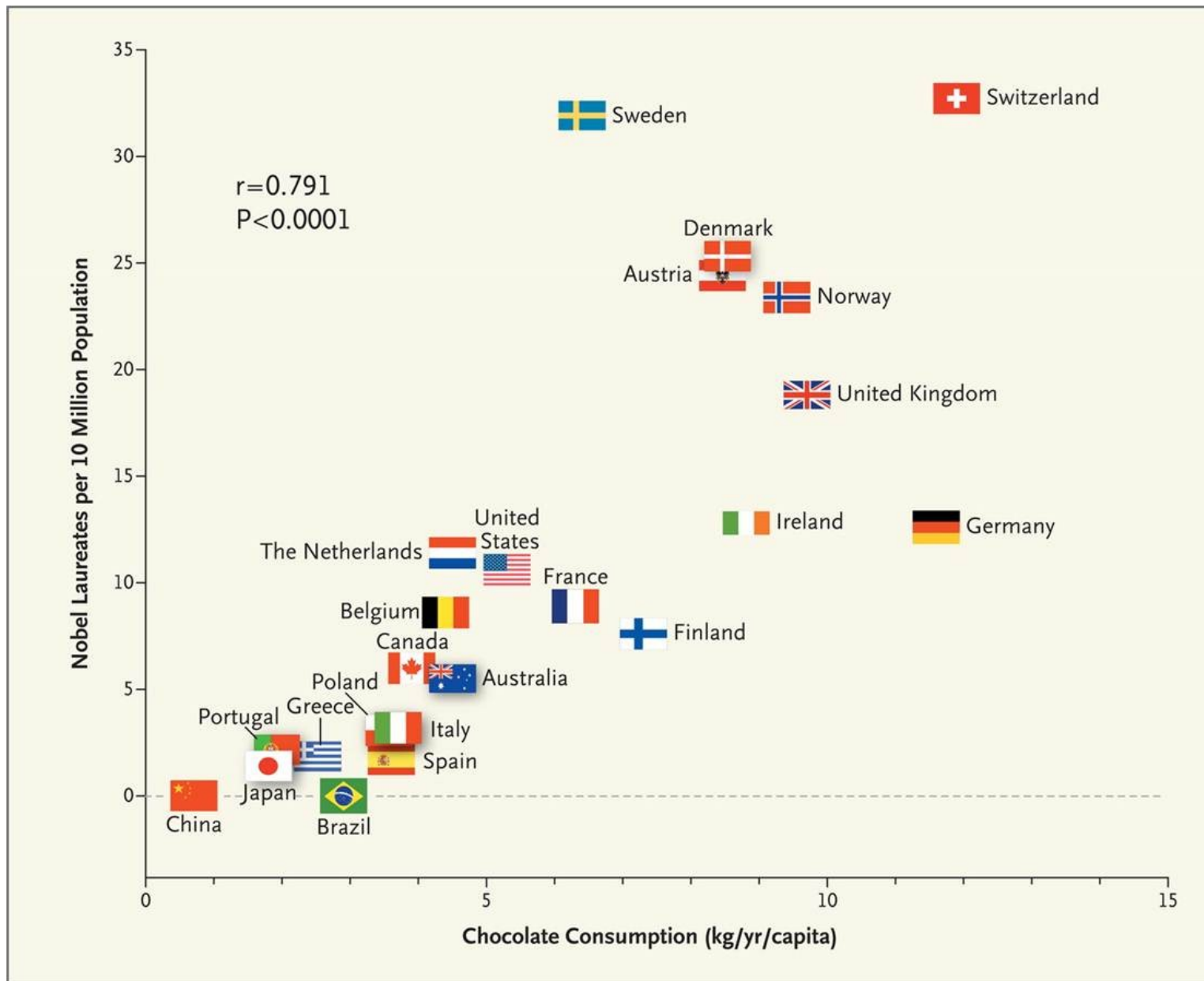
The real Joy of Painting



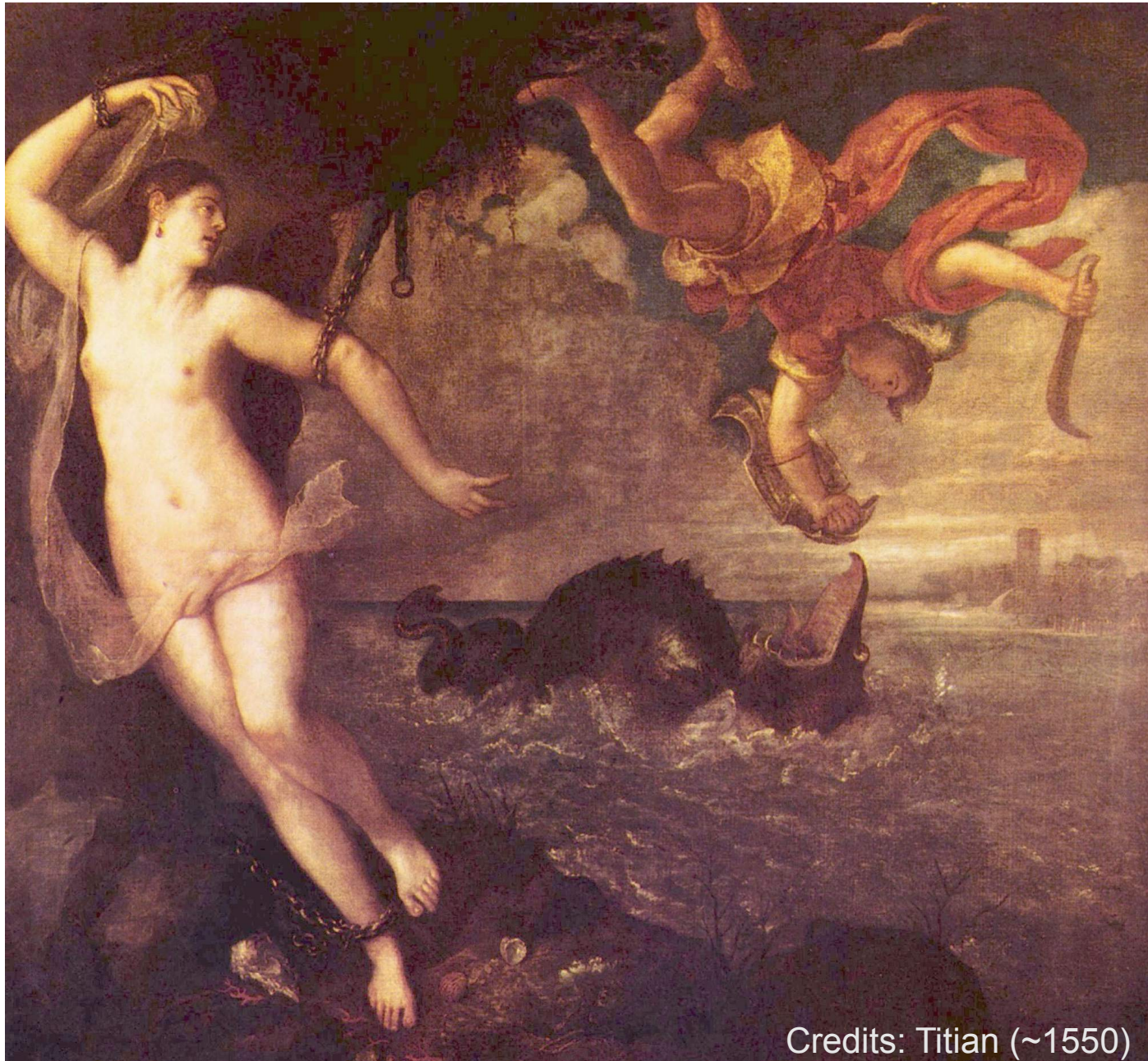
Almost The real Joy of Painting



Attention will be rewarded



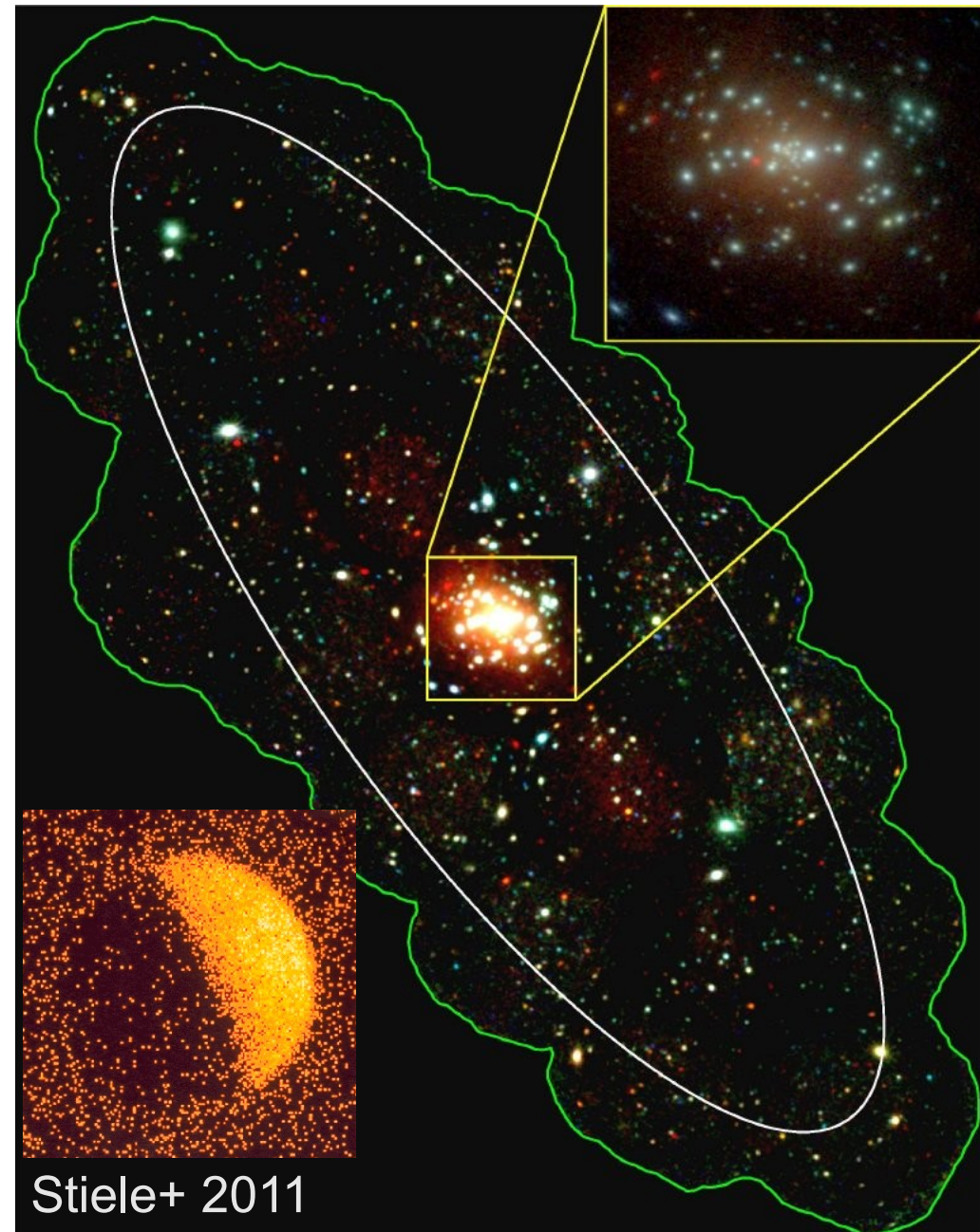
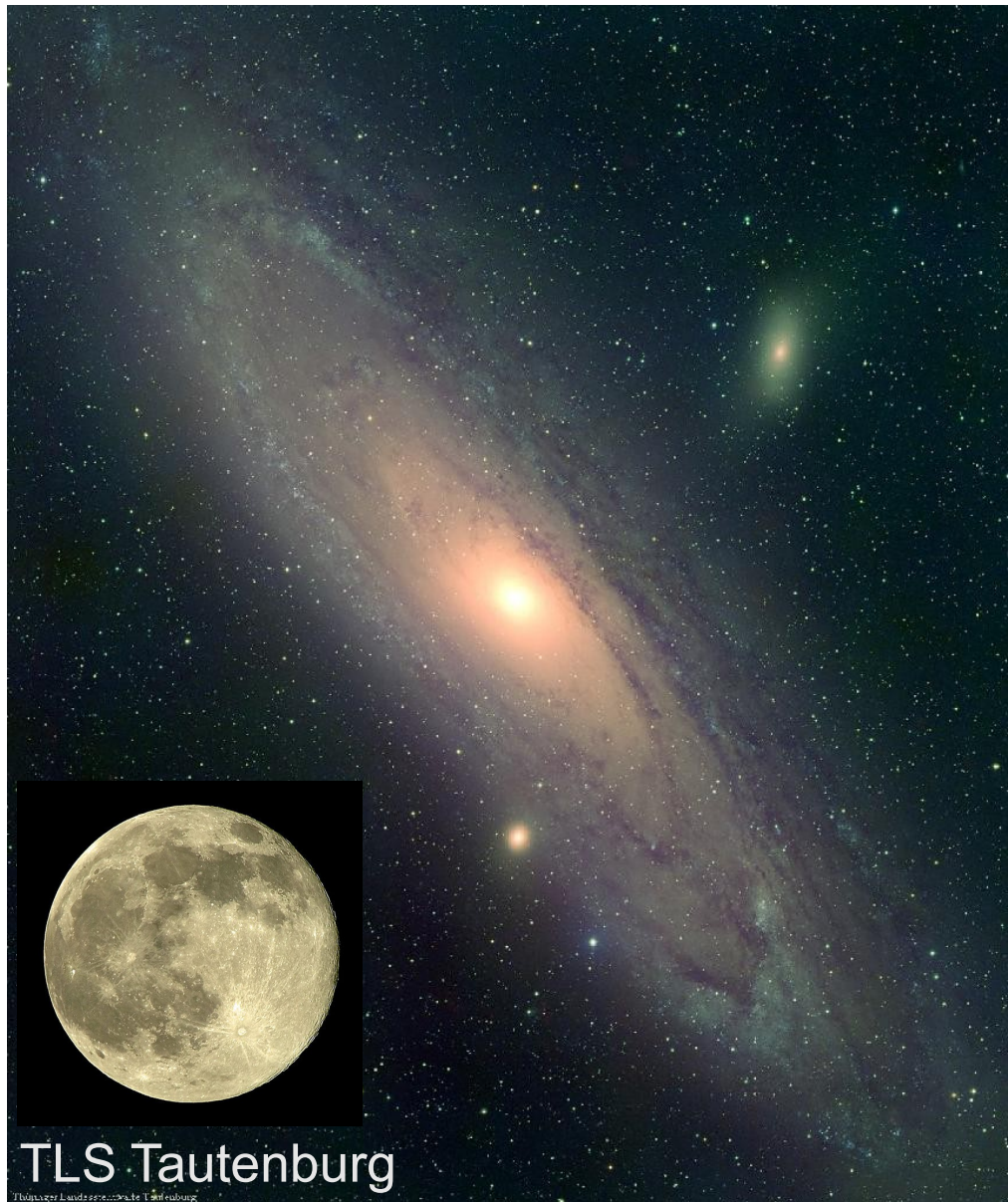
Introducing Andromeda



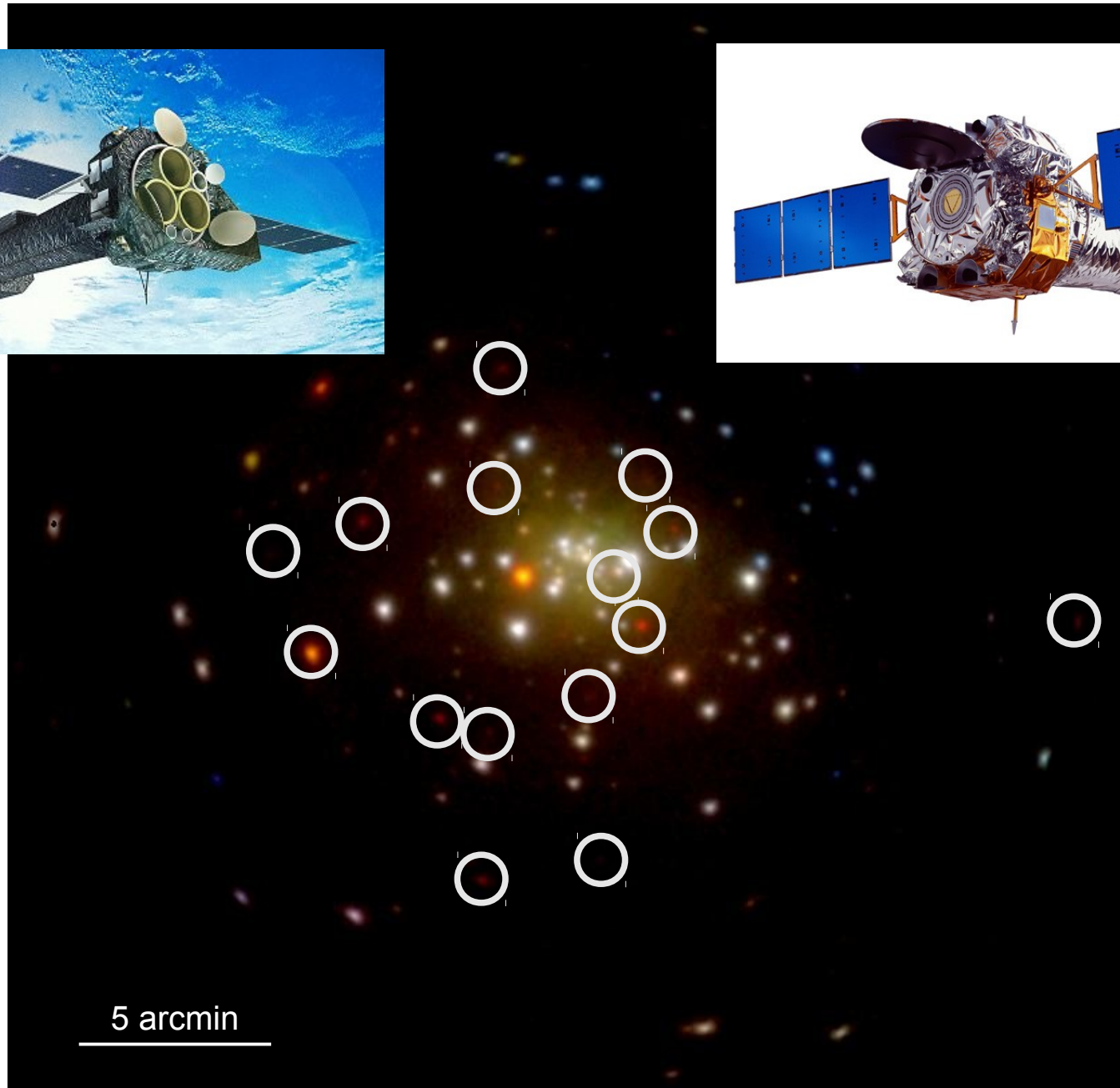
*Artist's
impression*

Credits: Titian (~1550)

Introducing Andromeda

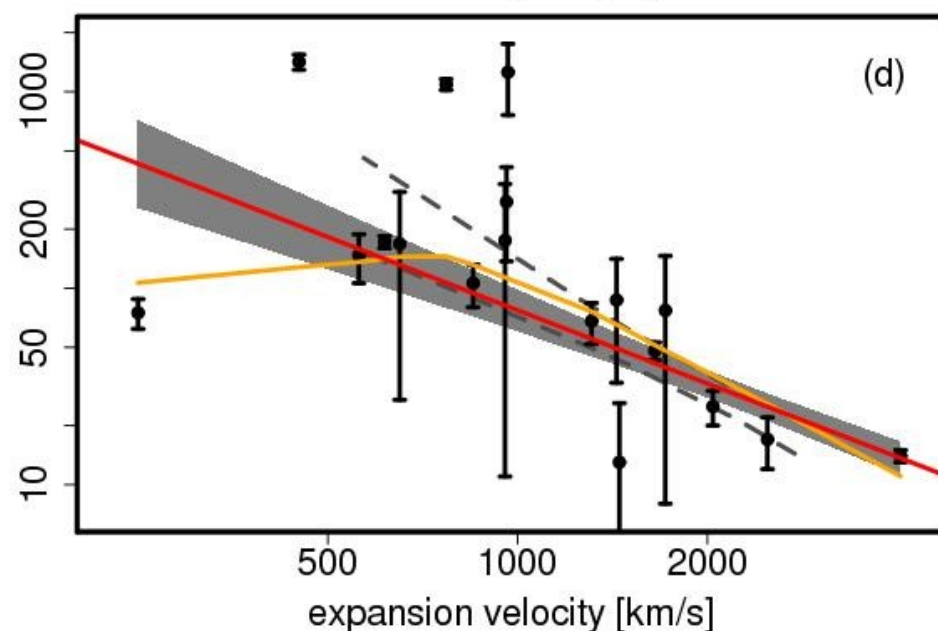
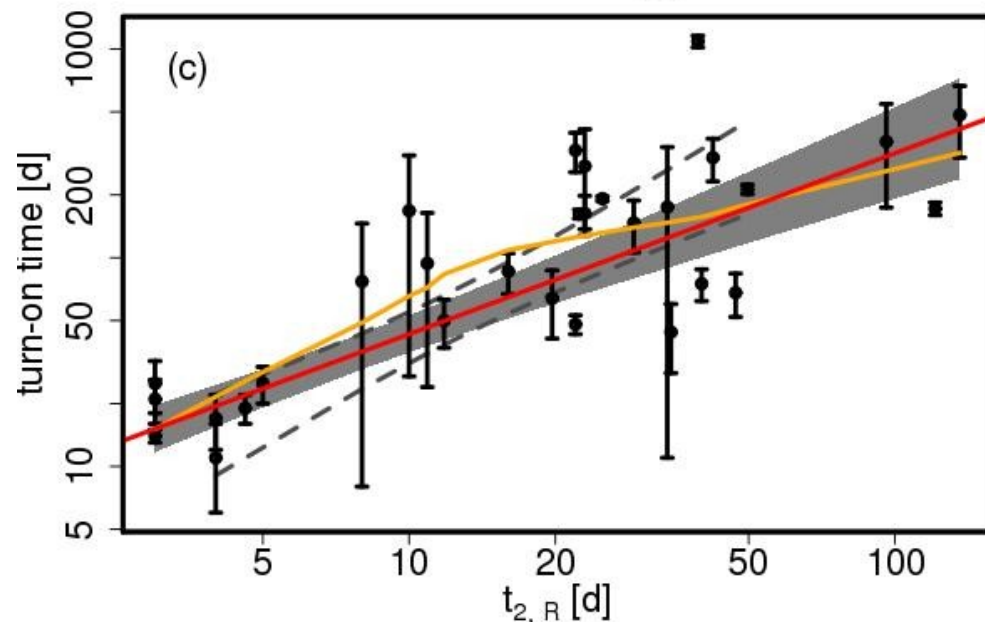
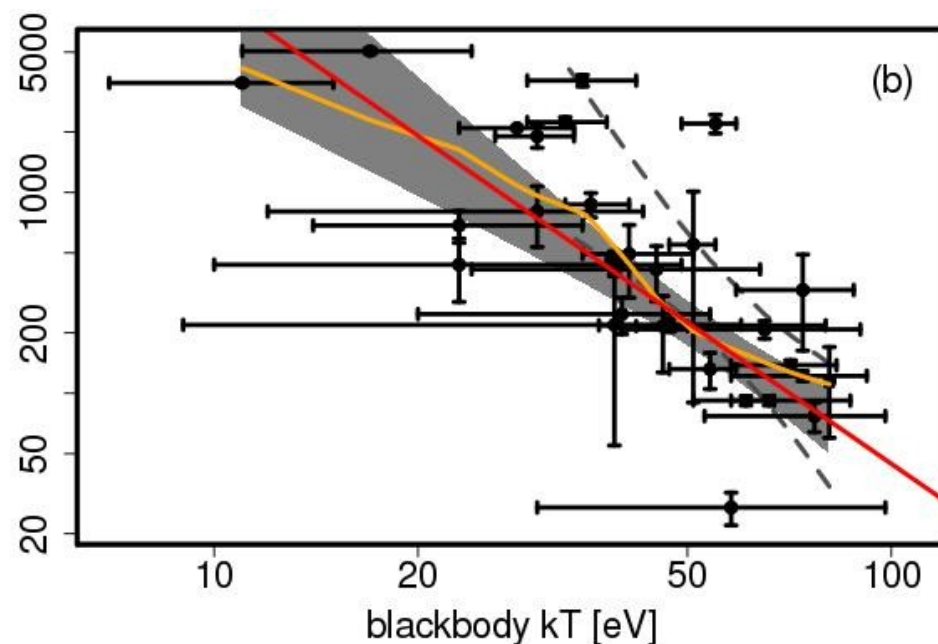
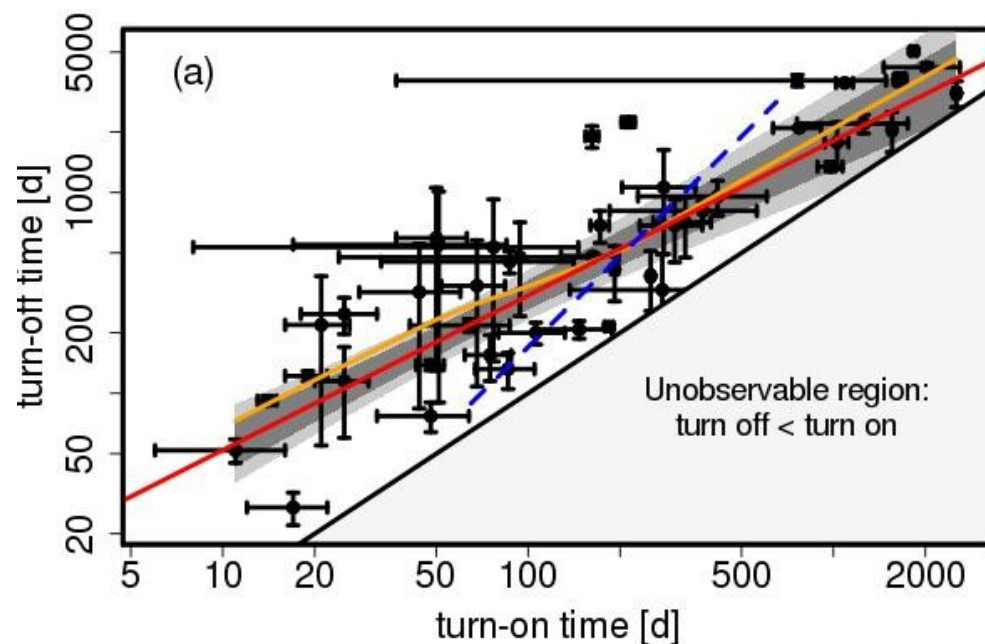


X-ray monitoring of the M31 central region



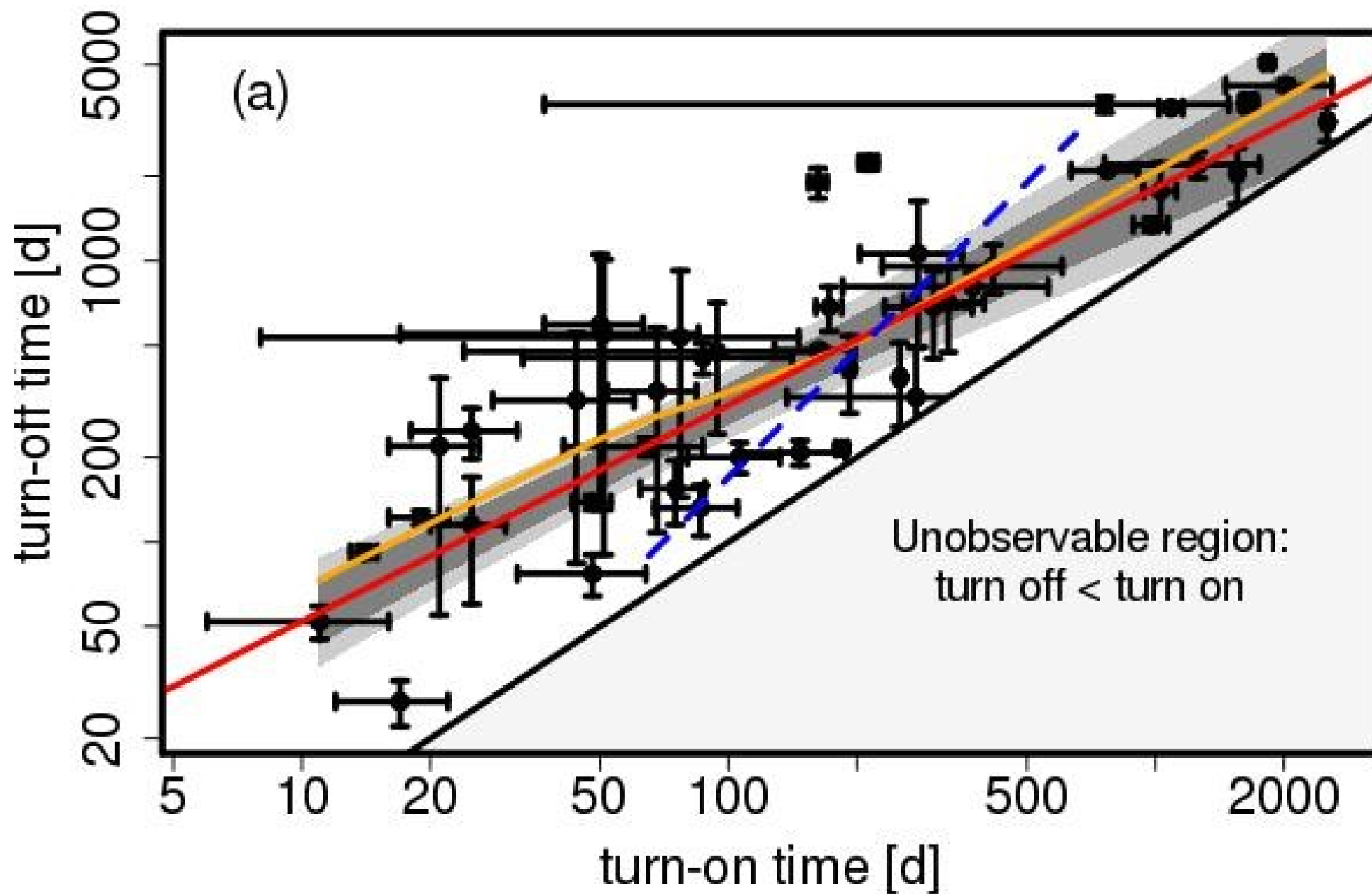
The Joy of Painting the big picture: Correlations

(Henze et al. 2014, A&A, 563, A2)



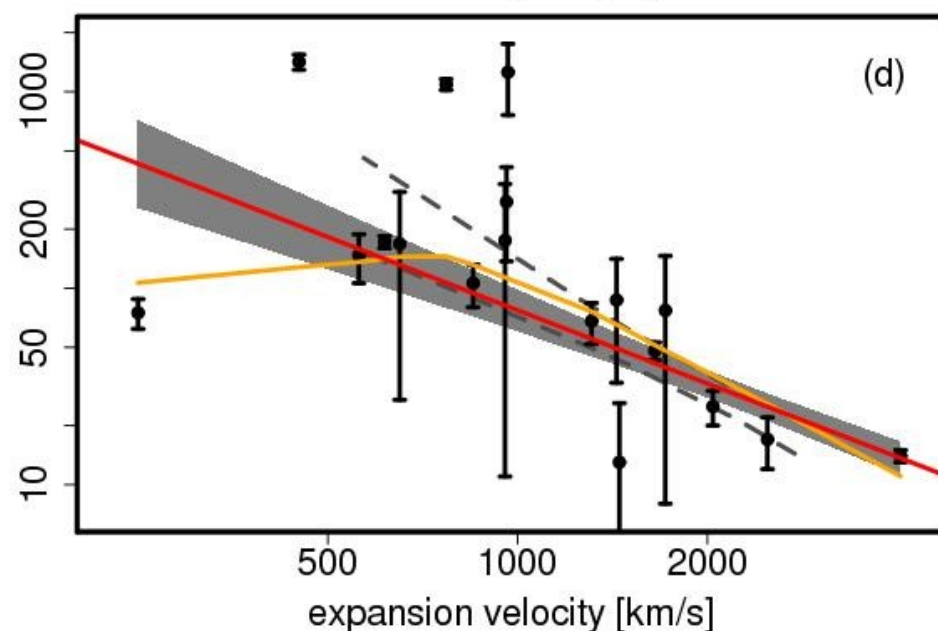
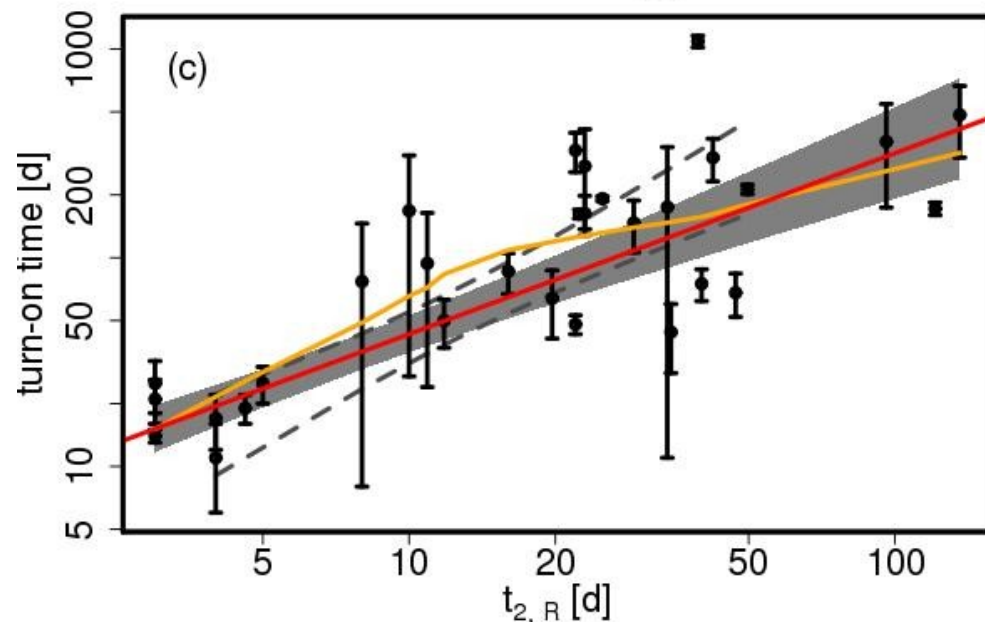
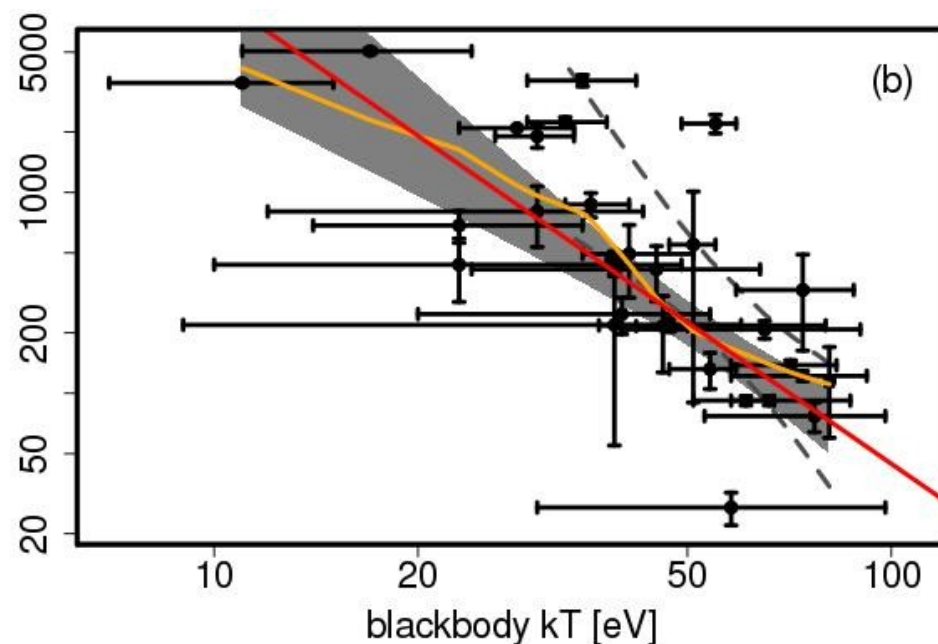
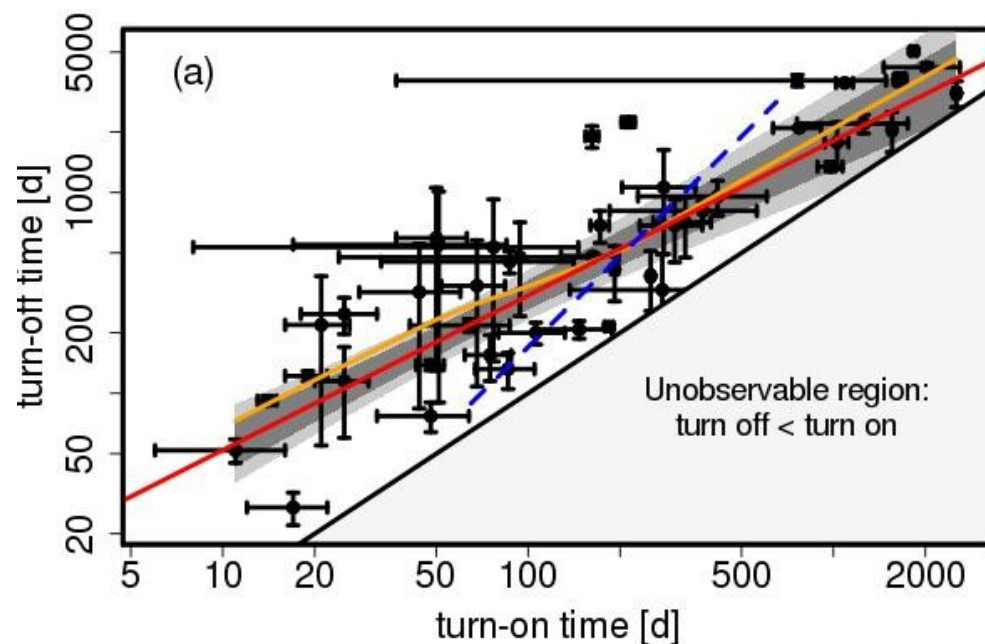
The Joy of Painting the big picture: Correlations

(Henze et al. 2014, A&A, 563, A2)



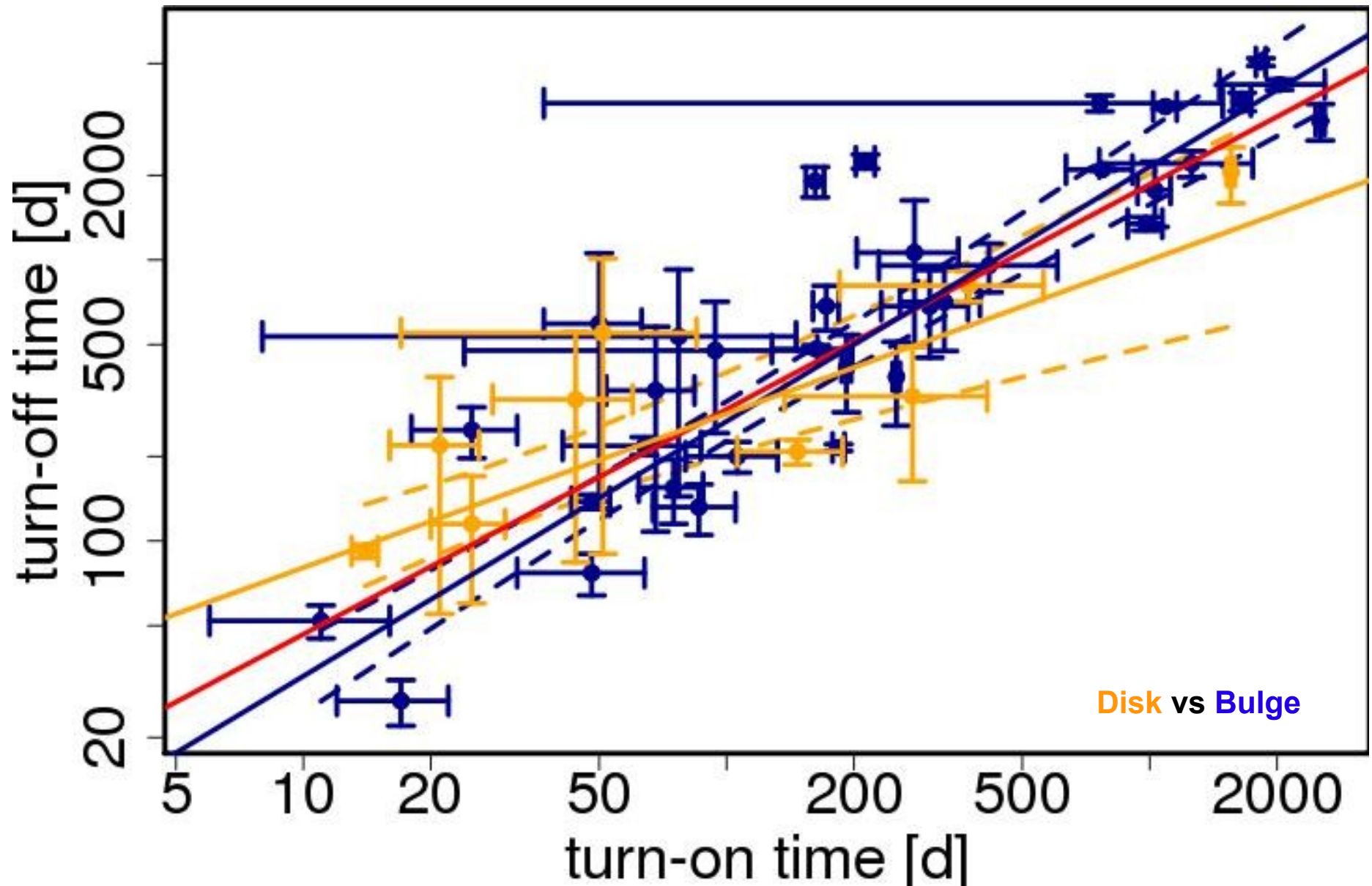
The Joy of Painting the big picture: Correlations

(Henze et al. 2014, A&A, 563, A2)



Population studies

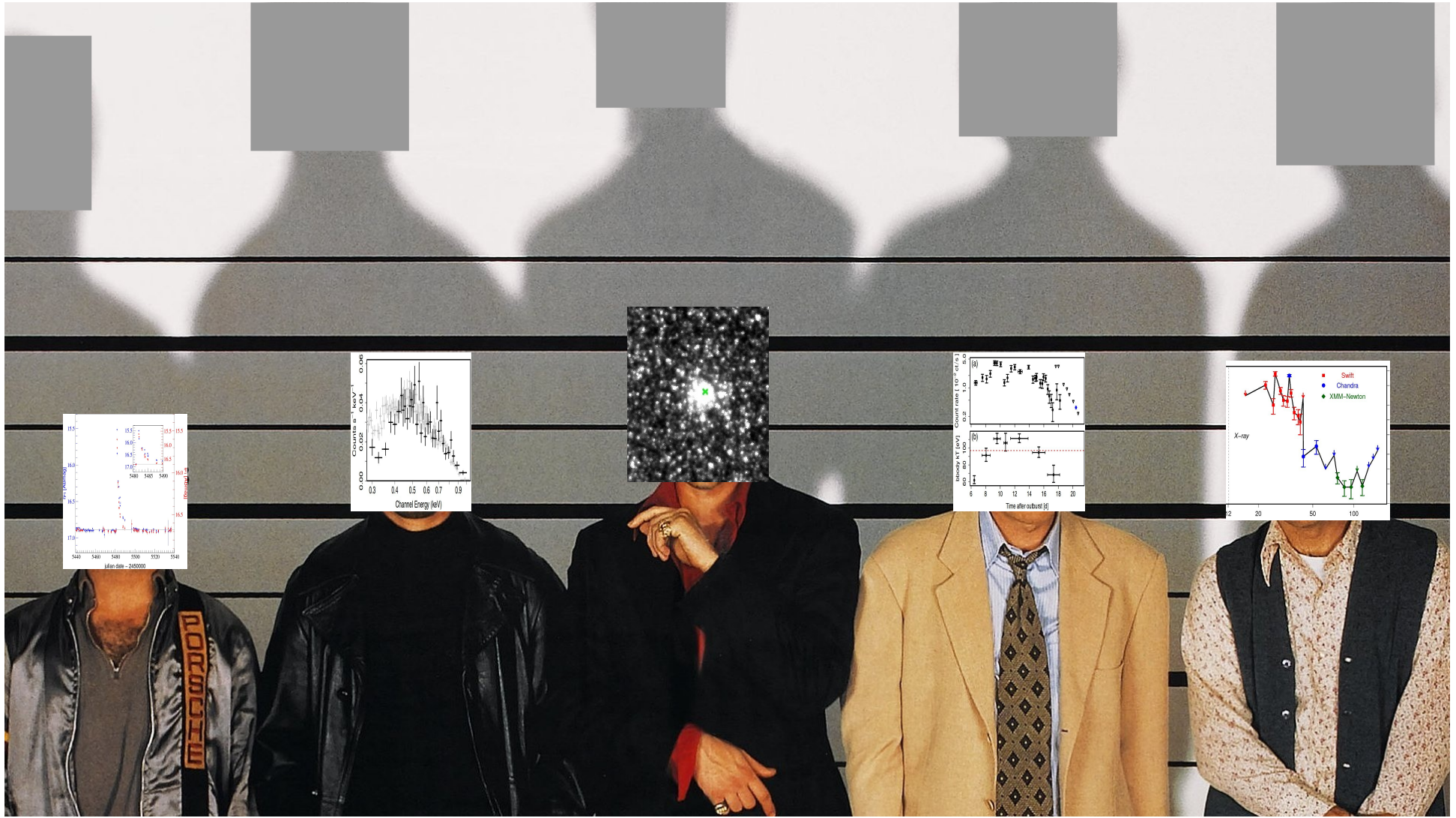
(Henze et al. 2014, A&A, 563, A2)



Population trends – the usual suspects

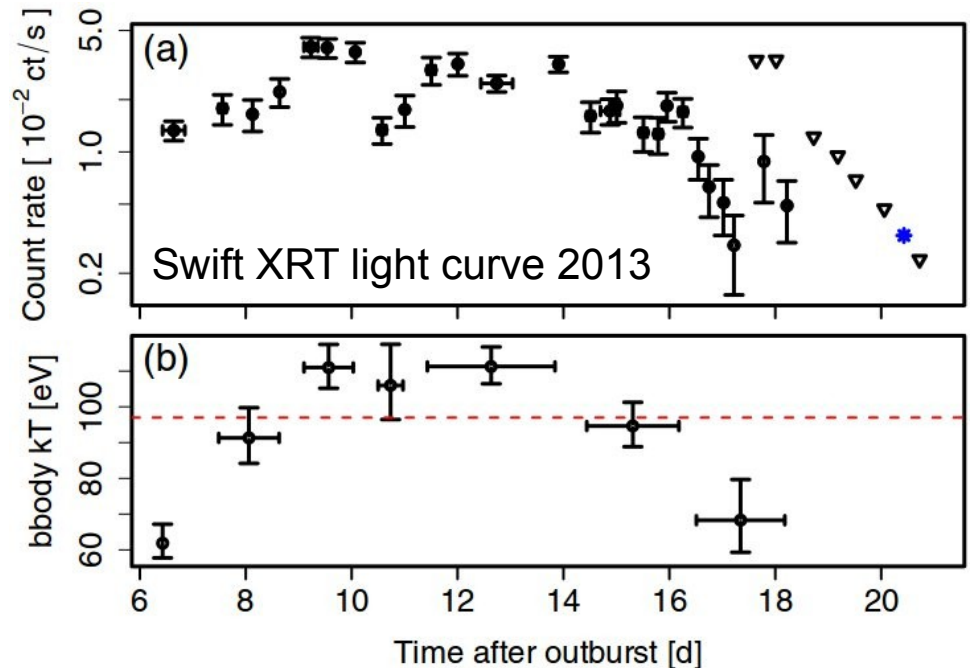
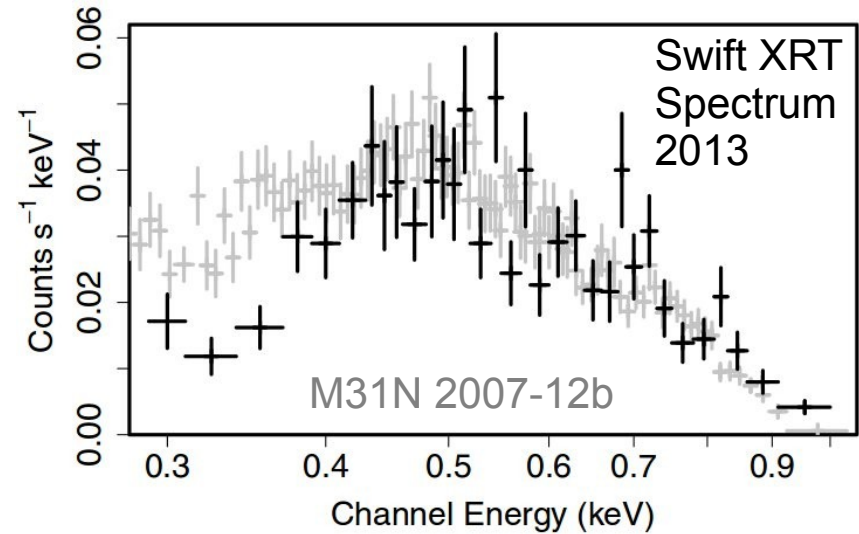
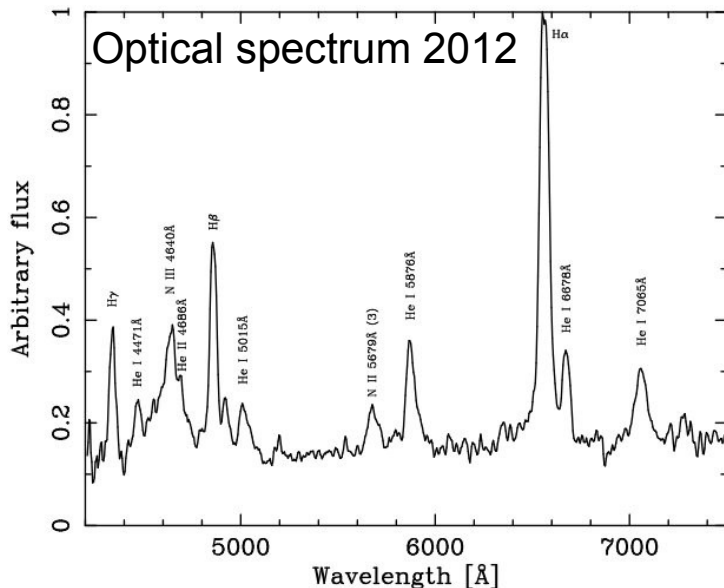
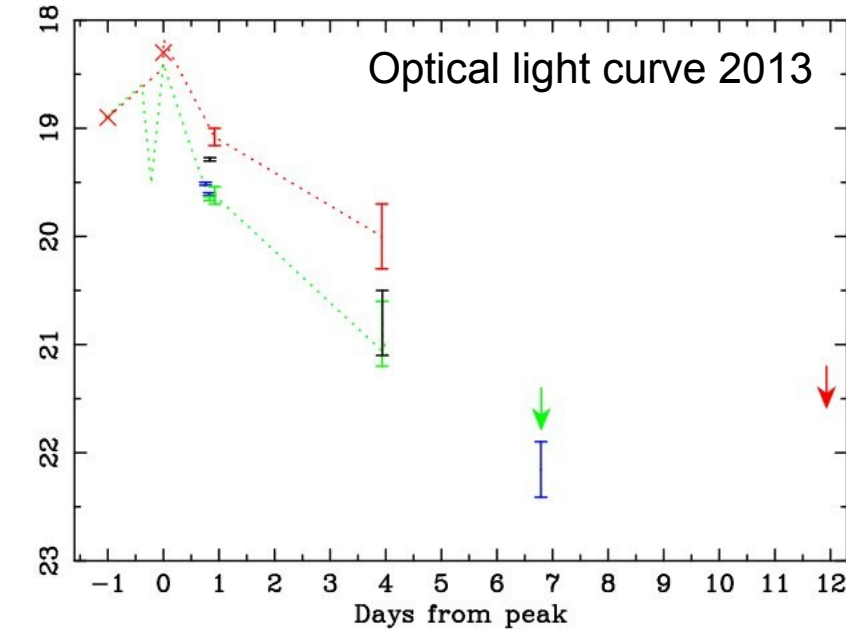


Individual novae – the unusual suspects



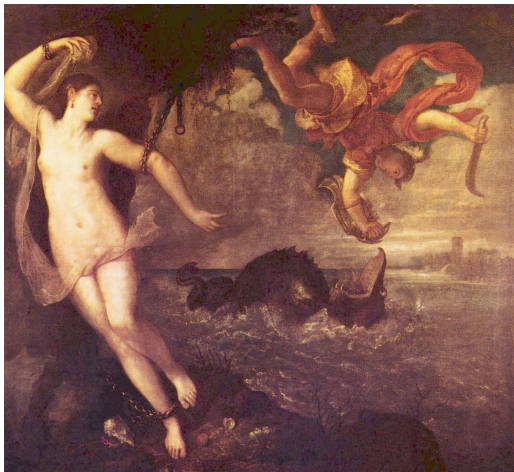
Extremely fast recurrent nova M31N 2008-12a

(Henze et al. 2014, A&A, 563, L8; Darnley et al. 2014, A&A, 563, L9)



Question Time: The Joy of Chocolate

a) Young lady's name?



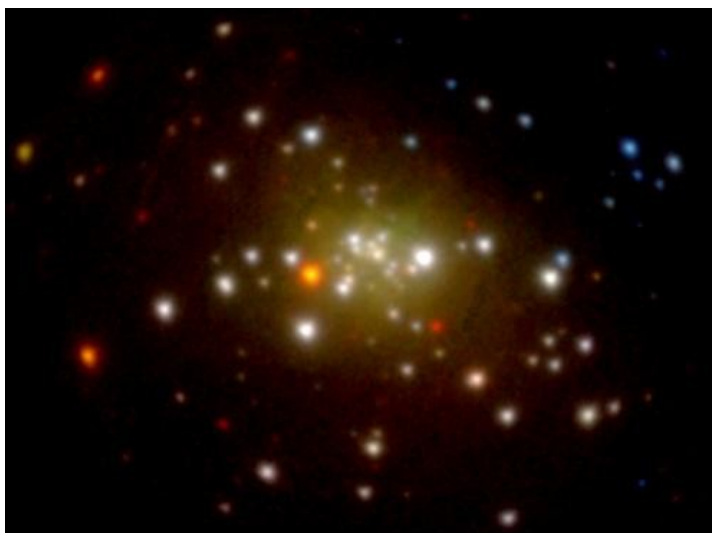
c) Which artist?



e) My name?



b) Why X-rays so important for nova science?



d) Why nova population studies so powerful and valuable?

