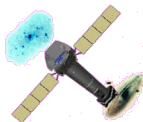


Blank sky data analysis

Jenny Carter, University of Leicester
Andy Read, University of Leicester



XMM
EPIC
MOS

Jenny Carter (jac48@star.le.ac.uk)
3rd EPIC BG WG Meeting
MPE, Germany 02/05/06



University of
Leicester

Plan – review

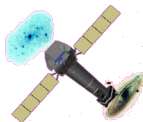
- Aim: Creation of long exposure blank sky EPIC BGevent files
 - 1 – Writing of the tasks/scripts
 - 2 – Compiling list(s) of observations
 - 3 – Creating BG event and other files
 - 4 – Stacking BG event and other files
 - low BG, long duration observations, no diffuse sources, few central targets
- At last stage aims achieved:

Using 2XMM pipeline products

Script 1 – creates event files and exposure maps

Script 2 – merges created event files

Script 3 – merges created exposure maps



XMM
EPIC
MOS

Jenny Carter (jac48@star.le.ac.uk)
3rd EPIC BG WG Meeting
MPE, Germany 02/05/06



University of
Leicester

General Procedure

Per instrument, filter and mode combination:

List of observations

no bright sources, long exposure etc



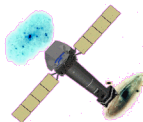
Create event lists and exposure maps



Merge event lists and exposure maps



One great big event list with an exposure map



XMM
EPIC
MOS

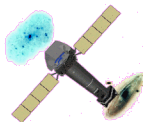
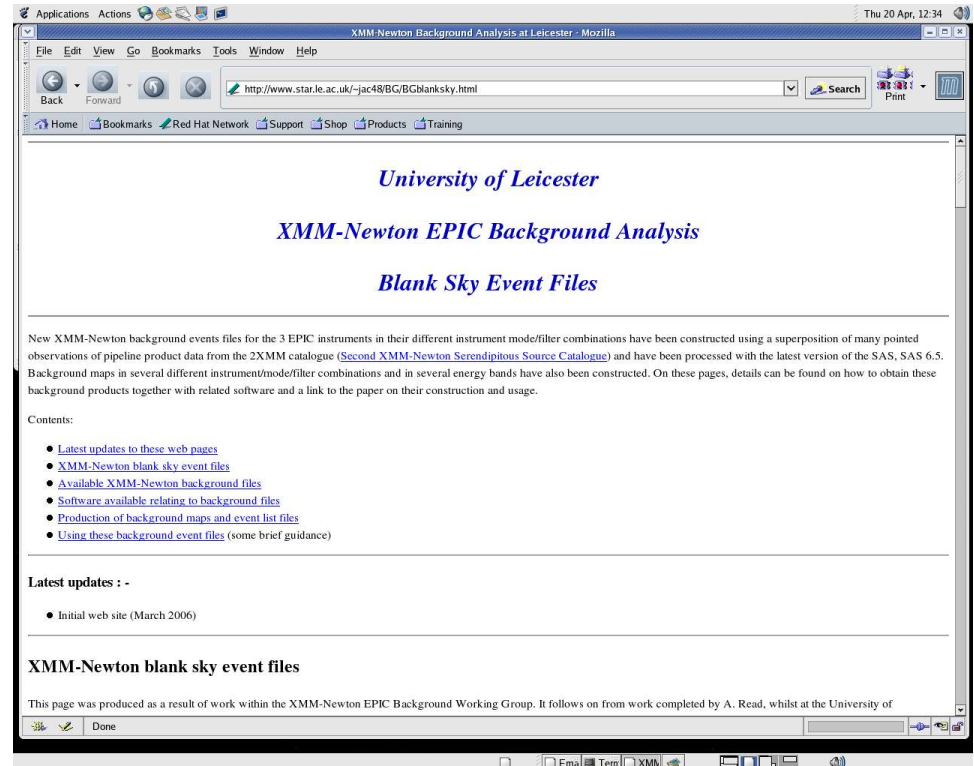
Jenny Carter (jac48@star.le.ac.uk)
3rd EPIC BG WG Meeting
MPE, Germany 02/05/06



University of
Leicester

Current status

- List of obs.
 - Bad obs. removed
- Improved ghosting procedure
- Web page
 - Scripts AMR, JAC
- Files to ESAC
 - Set 1 – unfilled (all)
 - Set 2 – filled (ready to go)



XMM
EPIC
MOS

Jenny Carter (jac48@star.le.ac.uk)
3rd EPIC BG WG Meeting
MPE, Germany 02/05/06

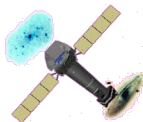
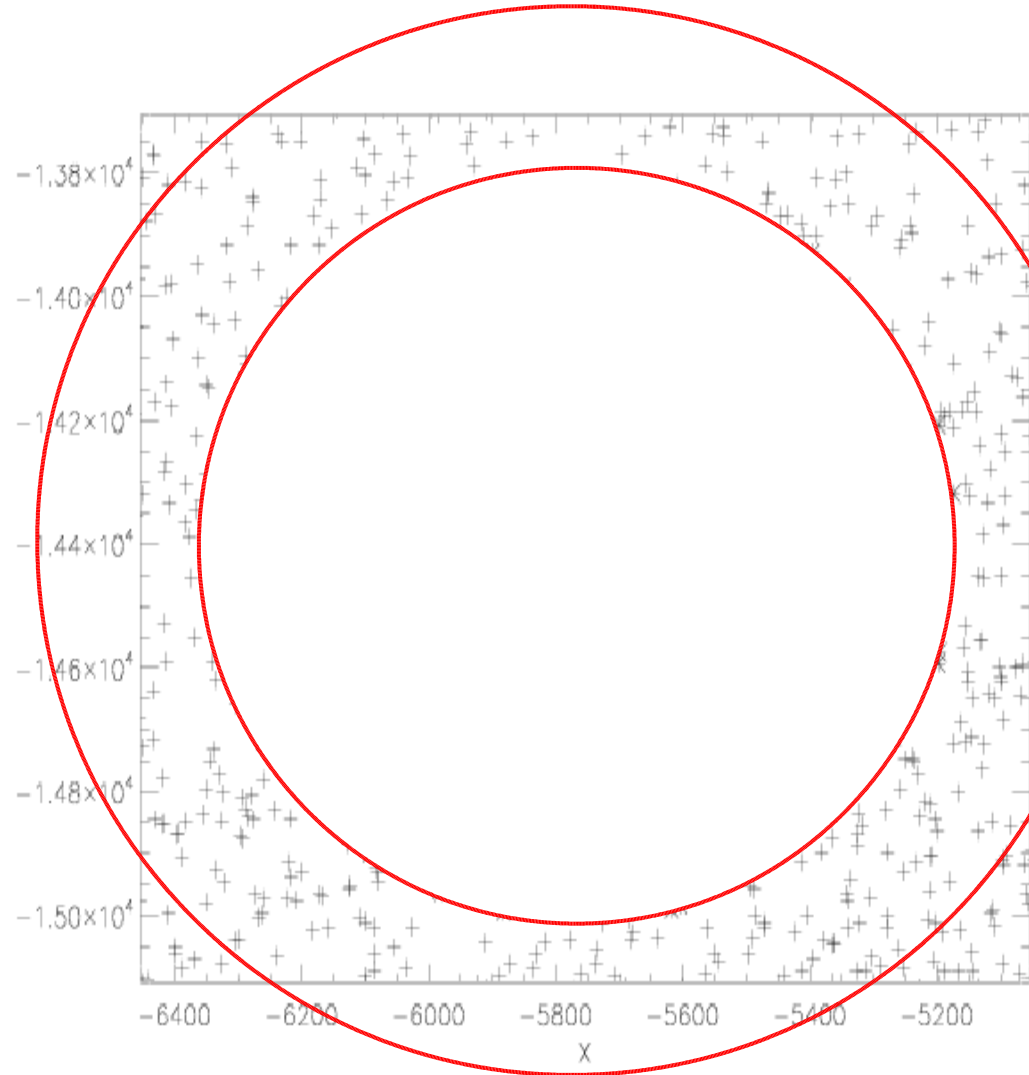


University of
Leicester

Filling the source holes in the event files - 'Ghosting'

- Match the area of the source hole to the area of an annulus surrounding the hole
- Copy the events in the ring
- Randomise the DETX, DETY positions of these copied events inside the annulus
- Add these events to the event file

- Consider complicated situations (multi-holes, edges etc.)
- (attcalc [to 0, 0, 0] to correct X, Y positions)



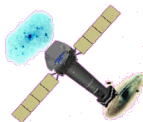
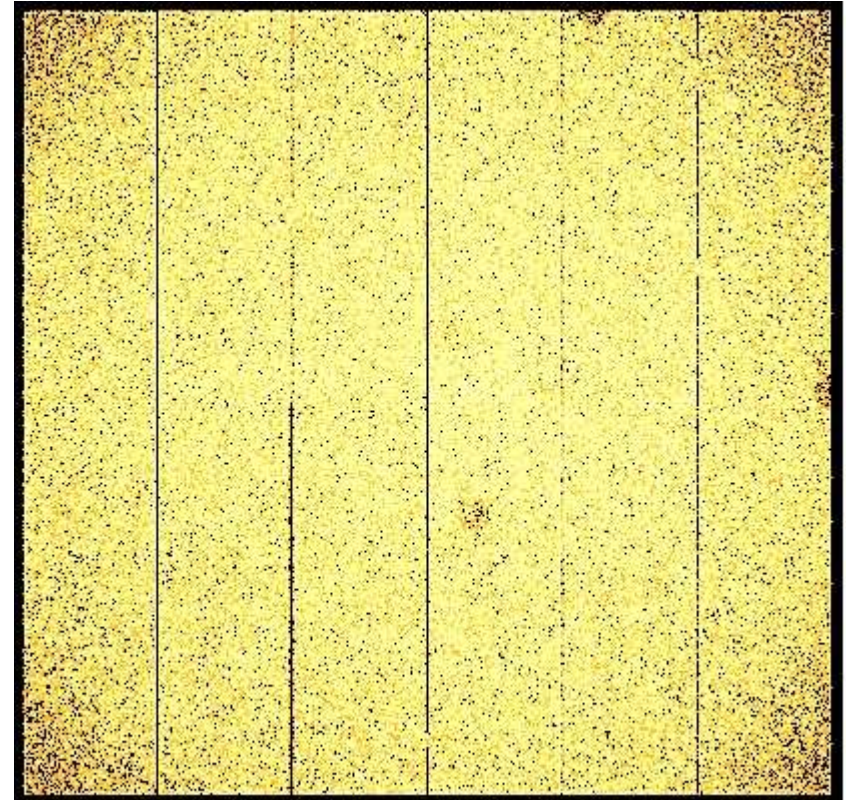
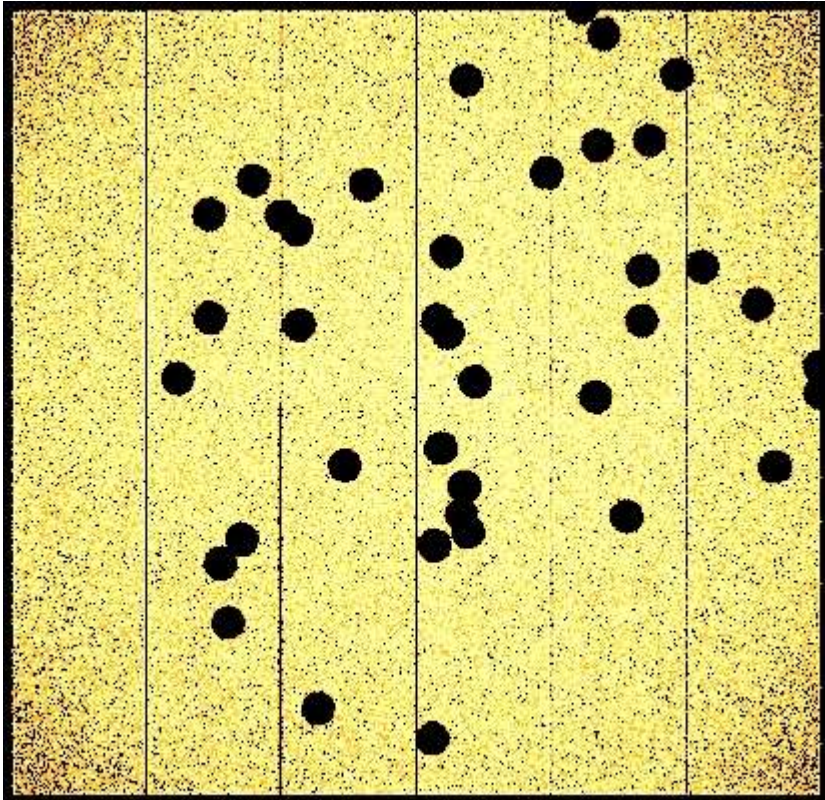
XMM
EPIC
MOS

Jenny Carter (jac48@star.le.ac.uk)
3rd EPIC BG WG Meeting
MPE, Germany 02/05/06



University of
Leicester

Example PN file ghosting procedure



XMM
EPIC
MOS

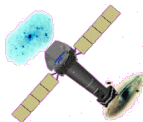
Jenny Carter (jac48@star.le.ac.uk)
3rd EPIC BG WG Meeting
MPE, Germany 02/05/06



University of
Leicester

Details of observations

Instrument	Mode	Filter	N _{OBS}	Exp.time (s)
MOS1	FF	Thick	12	3.01e5
MOS1	FF	Medium	65	1.58e6
MOS1	FF	Thin	113	2.19e6
MOS2	FF	Thick	13	3.44e5
MOS2	FF	Medium	67	1.68e6
MOS2	FF	Thin	111	2.09e6
PN	FF	Thick	10	2.37e5
PN	FF	Medium	33	1.08e6
PN	FF	Thin	42	9.93e5
PN	FFext	Thick	3	58664
PN	FFext	Medium	30	4.62e5
PN	FFext	Thin	62	8.25e5



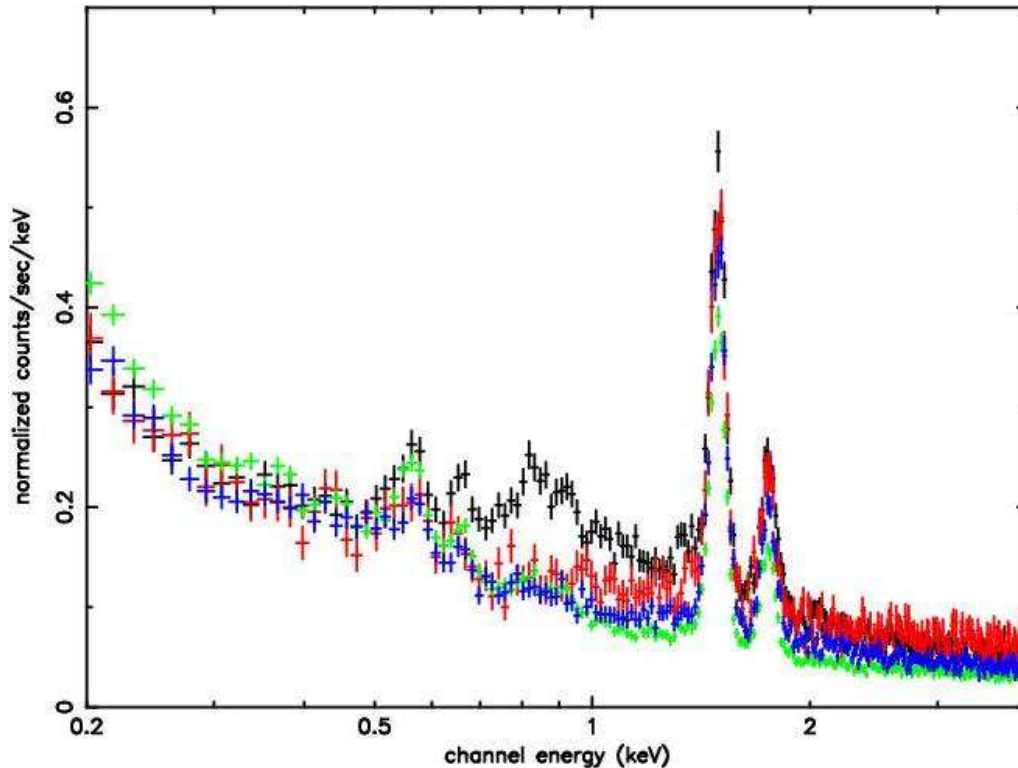
XMM
EPIC
MOS

Jenny Carter (jac48@star.le.ac.uk)
3rd EPIC BG WG Meeting
MPE, Germany 02/05/06



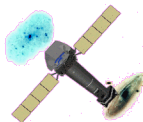
University of
Leicester

Location dependence



- MOS 1, thin, full-frame event file
- Galactic Centre enhancement features
- Tool produced for selection of events from a certain area of sky

expression = 'circle(0, 0, 10000, DETX, DETY)'



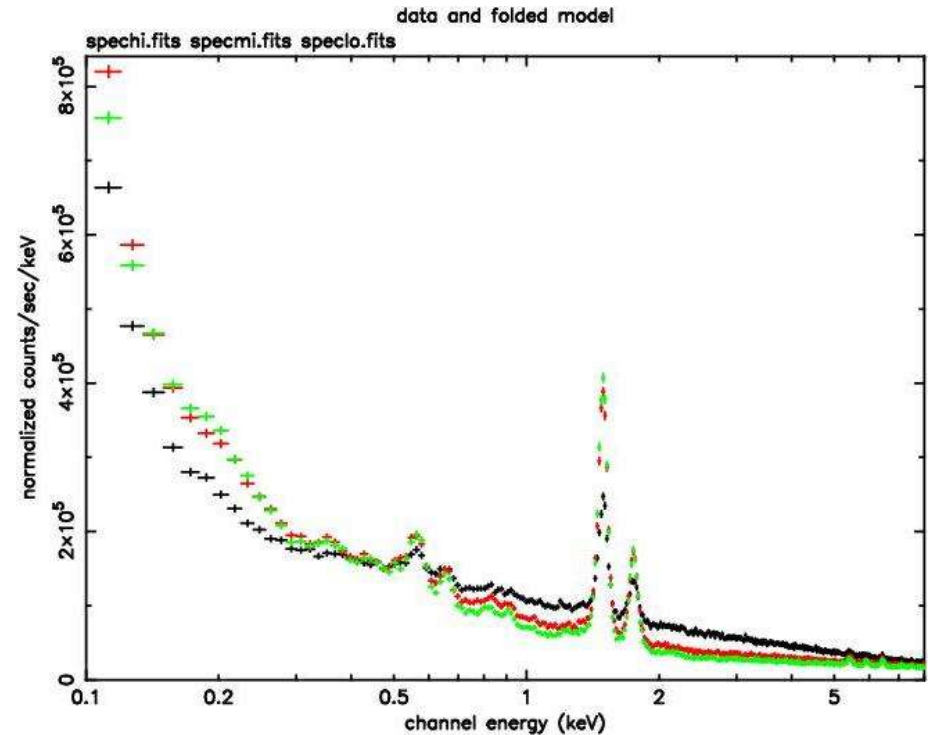
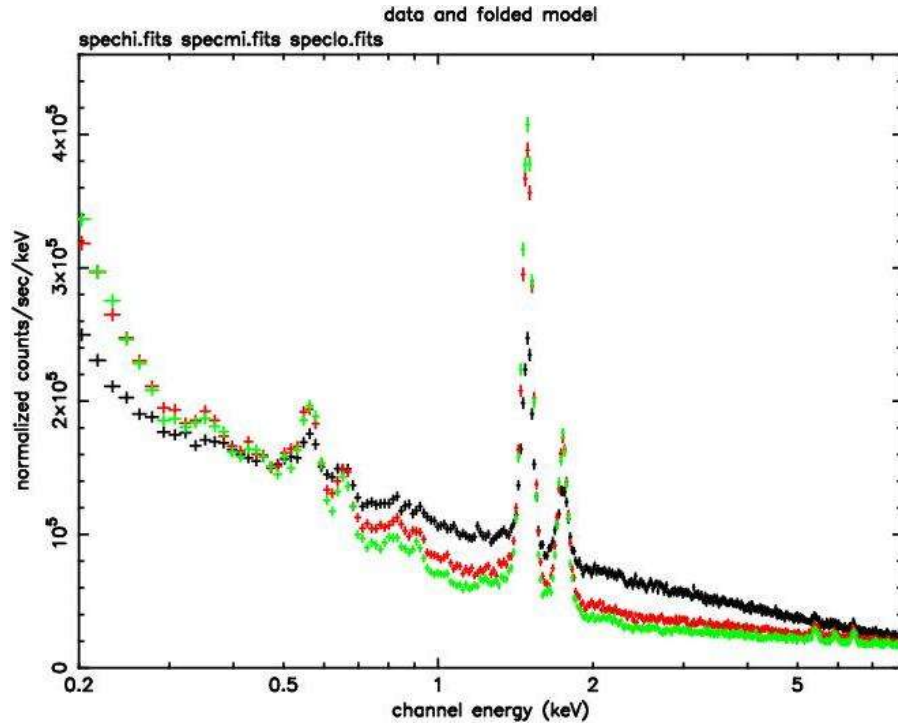
XMM
EPIC
MOS

Jenny Carter (jac48@star.le.ac.uk)
3rd EPIC BG WG Meeting
MPE, Germany 02/05/06

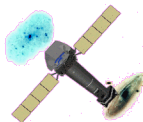


University of
Leicester

Count rate dependence



- Users may wish to make a selection based on count rate
- Differences between high, medium and low count rates



XMM
EPIC
MOS

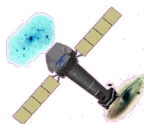
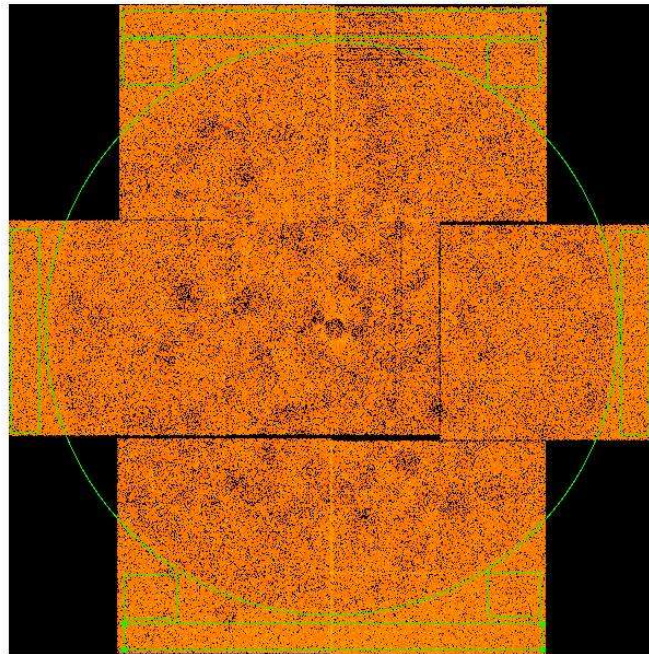
Jenny Carter (jac48@star.le.ac.uk)
3rd EPIC BG WG Meeting
MPE, Germany 02/05/06



University of
Leicester

Out of FOV count rate – instrumental particle BG

- All instruments, patterns = 0 and patterns ≤ 12 (MOS) or ≤ 4 (PN), with (PI ≥ 2500 && PI ≤ 6000)
- Differences, Anti-centre – winter, Galactic Centre – summer ??



XMM
EPIC
MOS

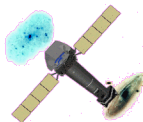
Jenny Carter (jac48@star.le.ac.uk)
3rd EPIC BG WG Meeting
MPE, Germany 02/05/06



University of
Leicester

Differences between instruments, patterns and locations

Instrument	Mode	Filter	Position	Pattern	CR (cts/s/arcmin ² x 10 ⁻⁴)
^t MOS 1	FF	T	N/A	0	2.69
MOS 1	FF	T	N/A	12	4.01
MOS 2	FF	T	N/A	0	2.87
MOS 2	FF	T	N/A	12	4.21
PN	FF	T	AC	0	19.2
PN	FF	T	AC	4	29.6
PN	FF	T	GC	0	36.4
PN	FF	T	GC	4	56.1



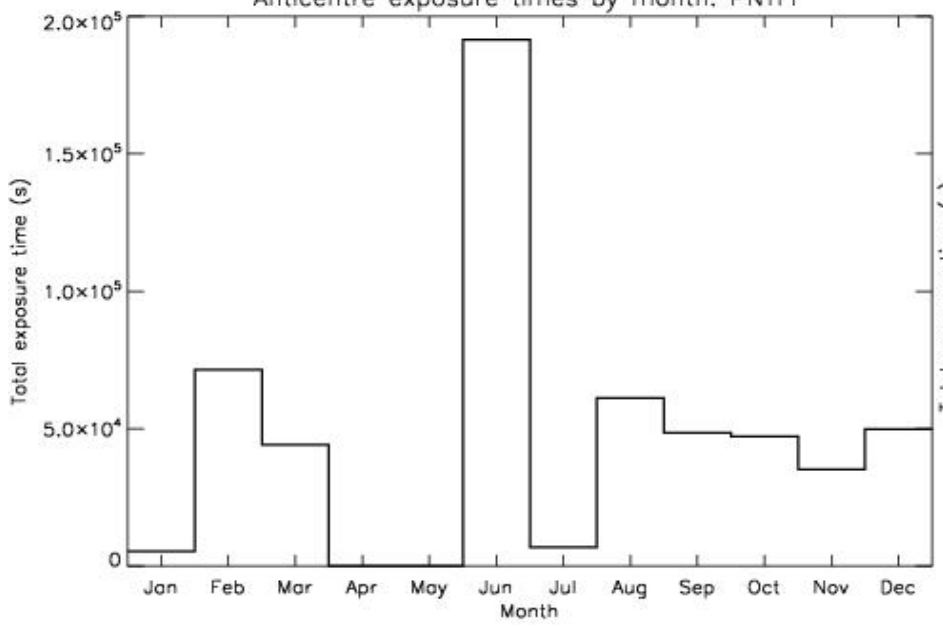
XMM
EPIC
MOS

Jenny Carter (jac48@star.le.ac.uk)
3rd EPIC BG WG Meeting
MPE, Germany 02/05/06

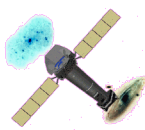
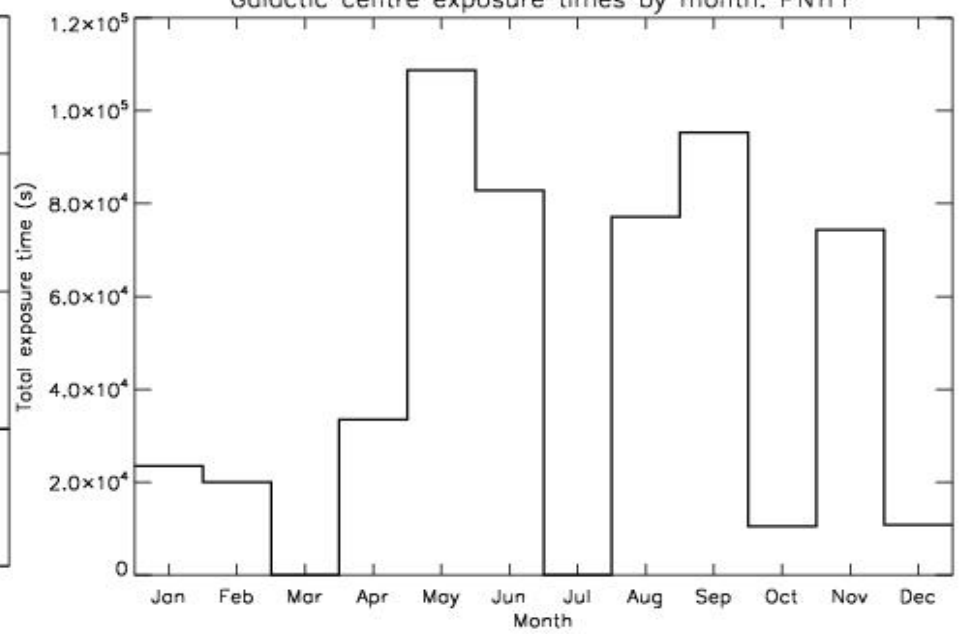


University of
Leicester

Anticentre exposure times by month: PNTFF



Galactic centre exposure times by month: PNTFF



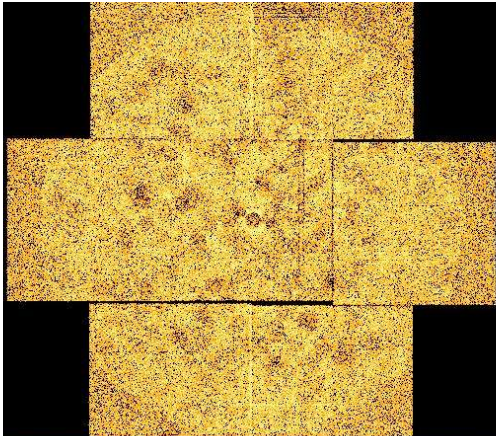
XMM
EPIC
MOS

Jenny Carter (jac48@star.le.ac.uk)
3rd EPIC BG WG Meeting
MPE, Germany 02/05/06

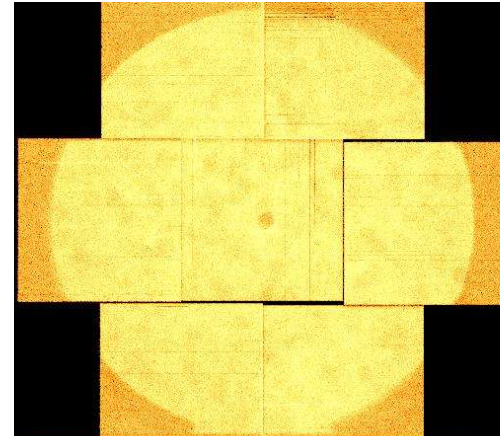


University of
Leicester

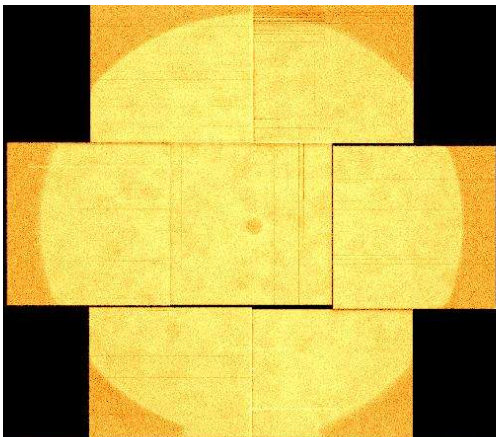
Final files – pictures MOS 1, unfilled



M1 K FF

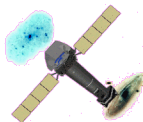


M1 T FF



M1 M FF

Images made from
the final event files



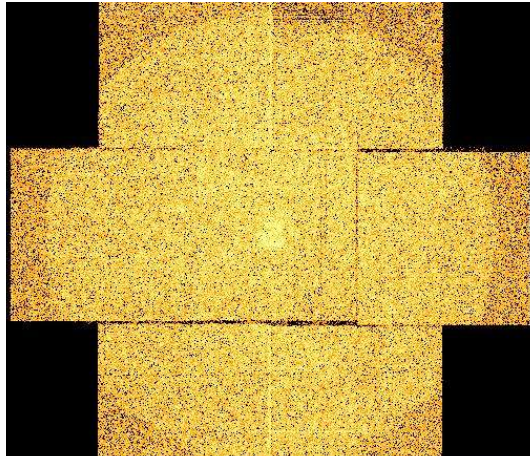
XMM
EPIC
MOS

Jenny Carter (jac48@star.le.ac.uk)
3rd EPIC BG WG Meeting
MPE, Germany 02/05/06

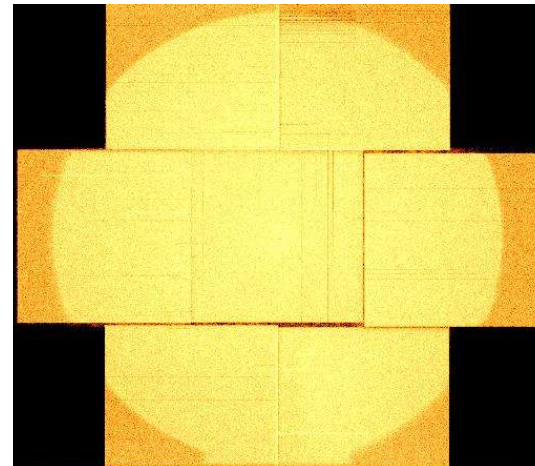


University of
Leicester

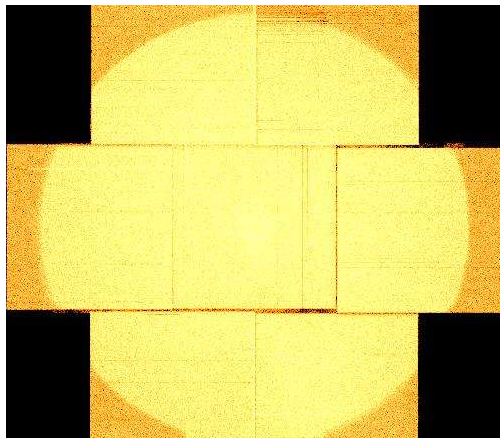
Final files – pictures MOS 1, refilled



M1 K FF

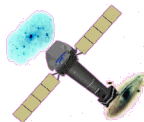


M1 T FF



M1 M FF

Images made from
the final event files



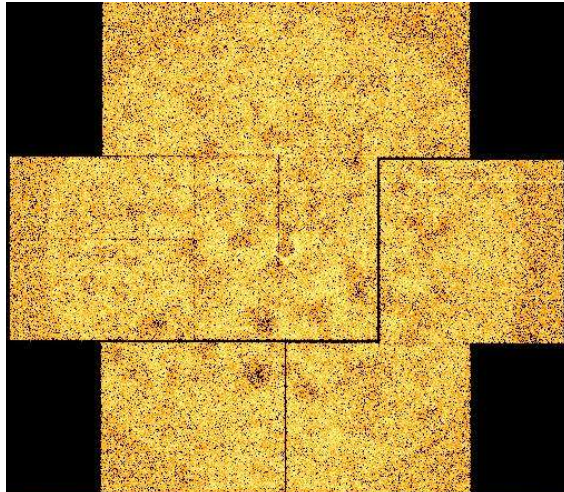
XMM
EPIC
MOS

Jenny Carter (jac48@star.le.ac.uk)
3rd EPIC BG WG Meeting
MPE, Germany 02/05/06

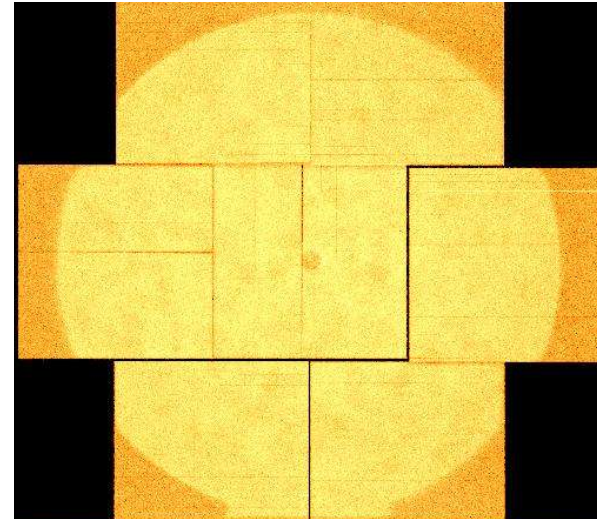


University of
Leicester

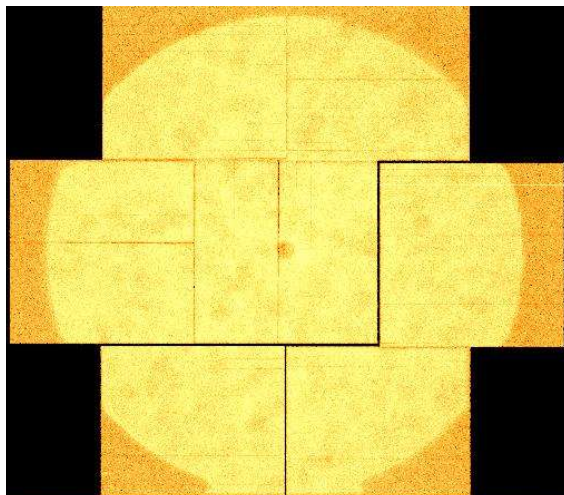
Final files – pictures MOS 2, unfilled



M2 K FF

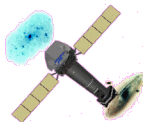


M2 T FF



M2 M FF

Images made from
the final event files



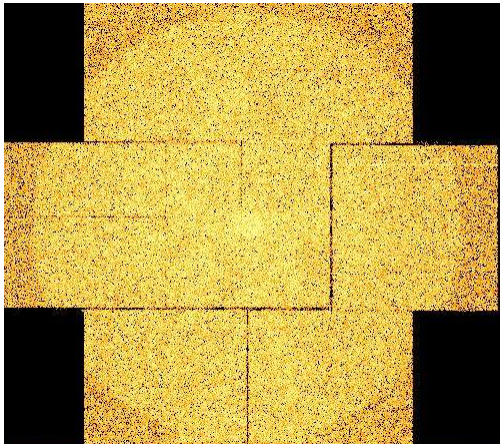
XMM
EPIC
MOS

Jenny Carter (jac48@star.le.ac.uk)
3rd EPIC BG WG Meeting
MPE, Germany 02/05/06

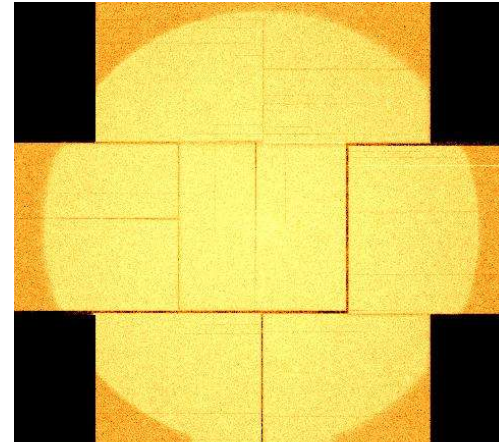


University of
Leicester

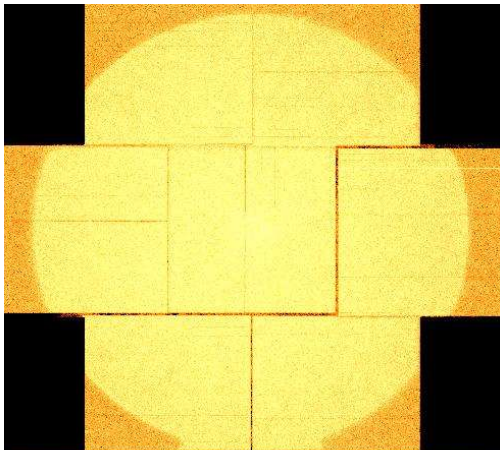
Final files – pictures MOS 2, refilled



M2 K FF

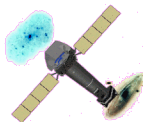


M2 T FF



M2 M FF

Images made from
the final event files



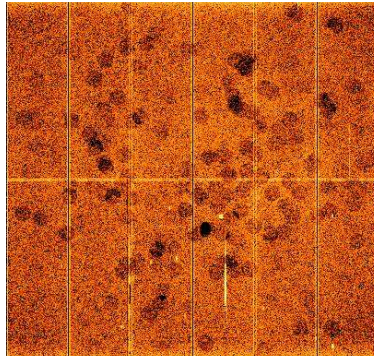
XMM
EPIC
MOS

Jenny Carter (jac48@star.le.ac.uk)
3rd EPIC BG WG Meeting
MPE, Germany 02/05/06

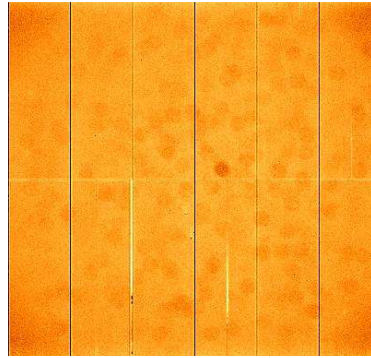


University of
Leicester

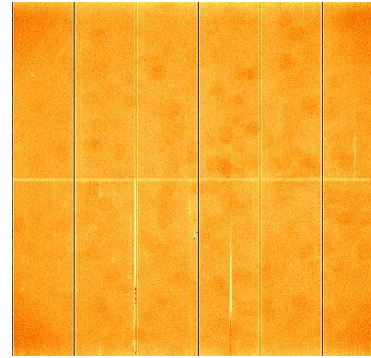
Final files – pictures PN, unfilled



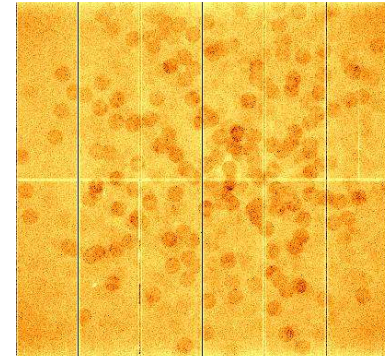
PN K EF



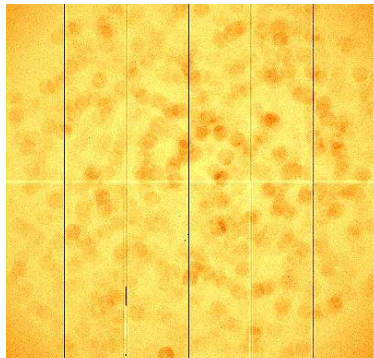
PN M EF



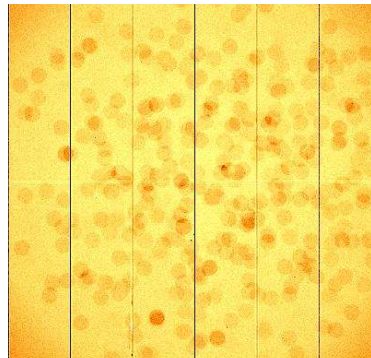
PN T EF



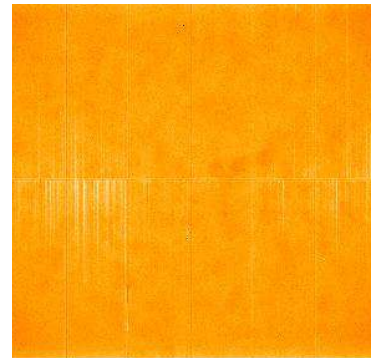
PN K FF



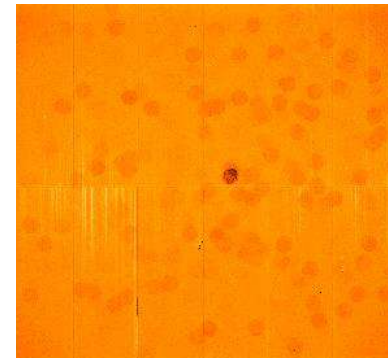
PN M FF
anticentre



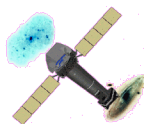
PN M FF
Galactic centre



PN T FF
anticentre



PN T FF
Galactic centre



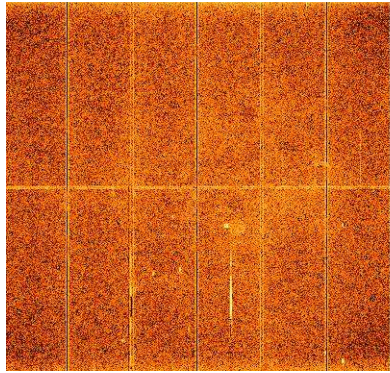
XMM
EPIC
MOS

Jenny Carter (jac48@star.le.ac.uk)
3rd EPIC BG WG Meeting
MPE, Germany 02/05/06

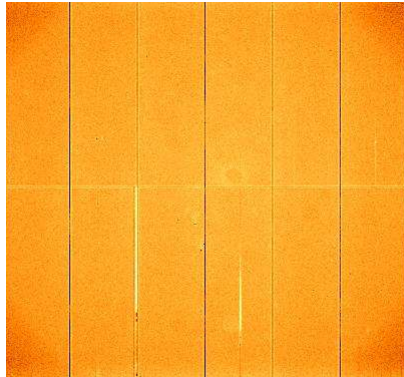


University of
Leicester

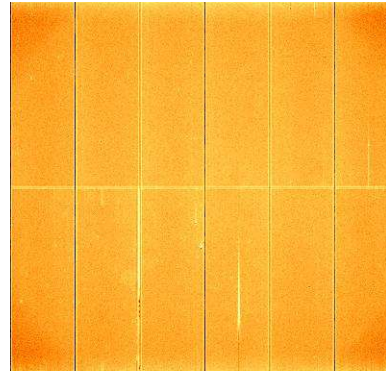
Final files – pictures PN, refilled



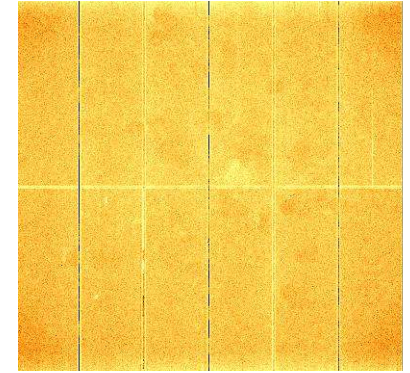
PN K EF



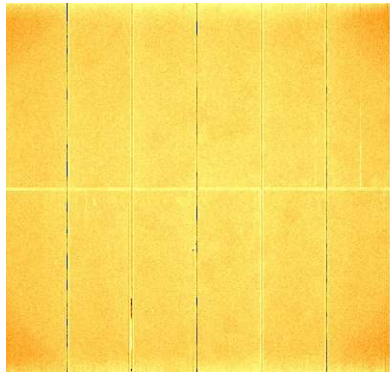
PN M EF



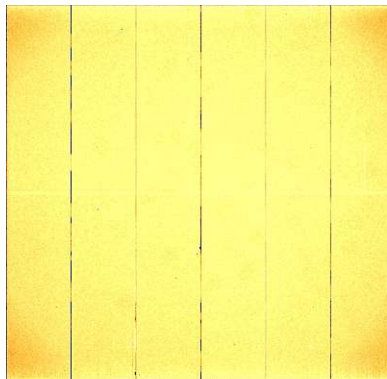
PN T EF



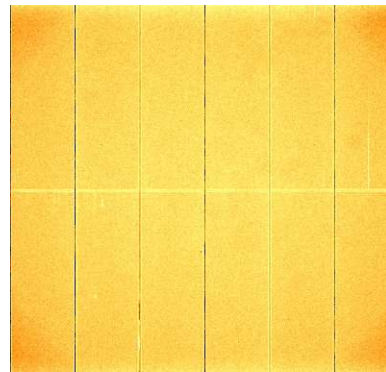
PN K FF



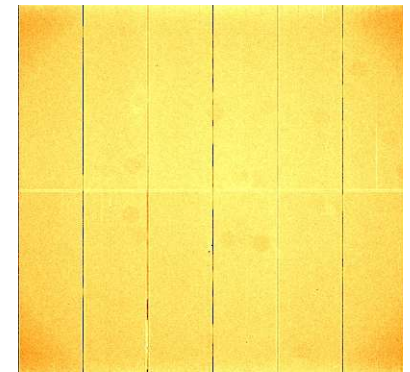
PN M FF
anticentre



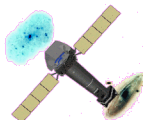
PN M FF
Galactic centre



PN T FF
anticentre



PN T FF
Galactic centre



XMM
EPIC
MOS

Jenny Carter (jac48@star.le.ac.uk)
3rd EPIC BG WG Meeting
MPE, Germany 02/05/06



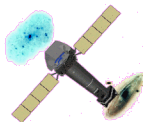
University of
Leicester

Tools available on the web page

- SkyCast - attcalc
- BGrebinimage2SKY_2006 – rebinning, positioning
- SelectRADec – select events based on angular separation

Possible additions:

- OOT
- Count rate selection tool



XMM
EPIC
MOS

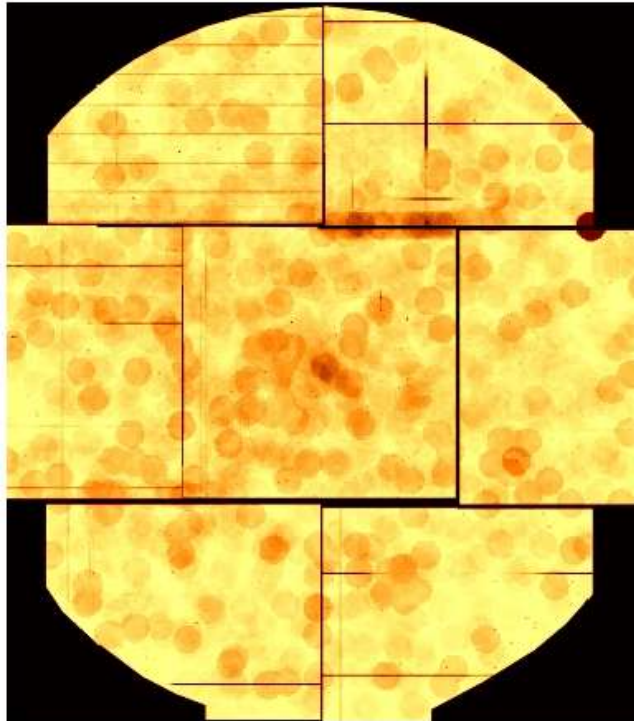
Jenny Carter (jac48@star.le.ac.uk)
3rd EPIC BG WG Meeting
MPE, Germany 02/05/06



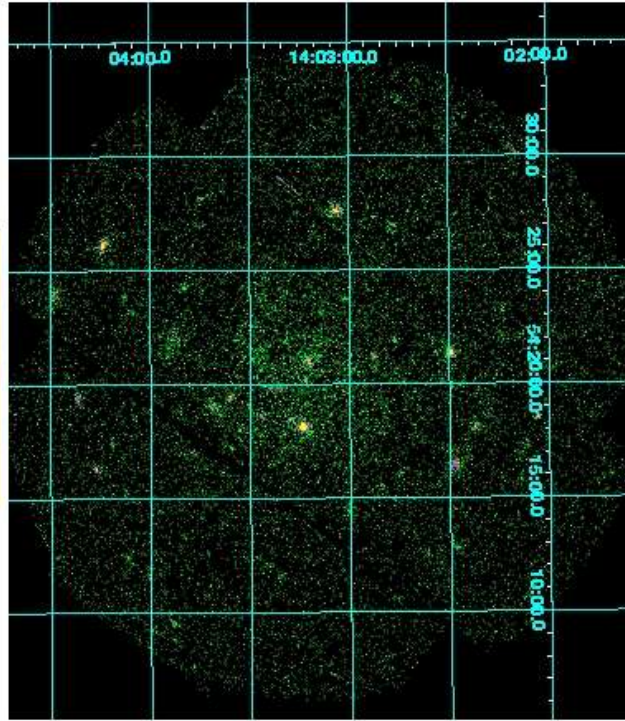
University of
Leicester

- Use of BGrebinimage2SKY_2006 to transform/rebin from DET to SKY

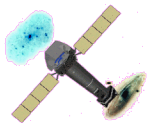
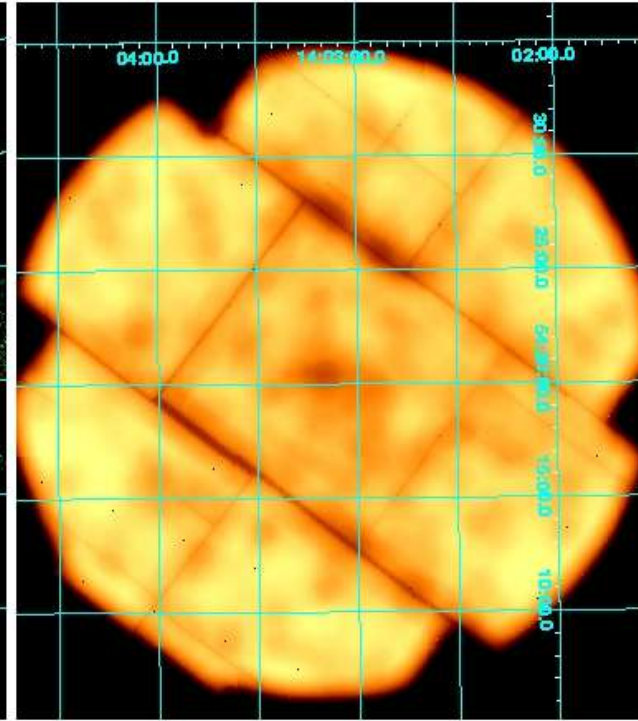
BG Exposure map (4) in
detector coordinates



User's image (??) in sky
coordinates



BG Exposure map (??) in
user's sky coordinates

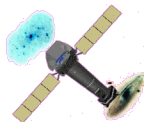


XMM
EPIC
MOS

Jenny Carter (jac48@star.le.ac.uk)
3rd EPIC BG WG Meeting
MPE, Germany 02/05/06



University of
Leicester

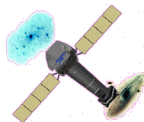


XMM
EPIC
MOS

Jenny Carter (jac48@star.le.ac.uk)
3rd EPIC BG WG Meeting
MPE, Germany 02/05/06



University of
Leicester

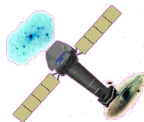
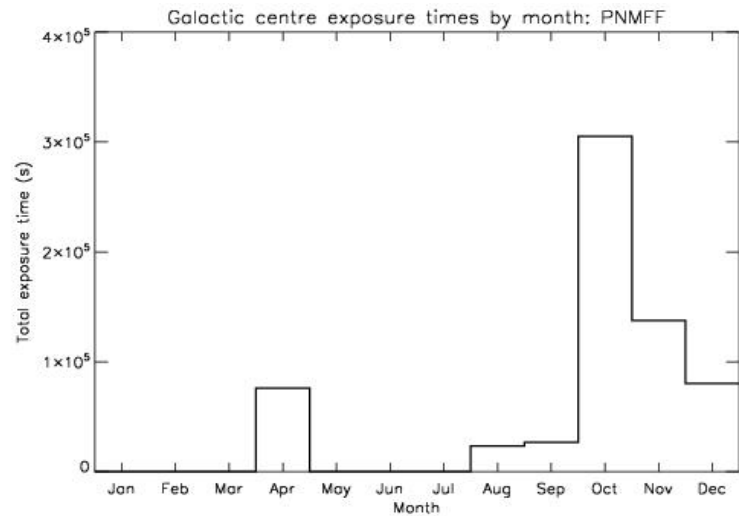
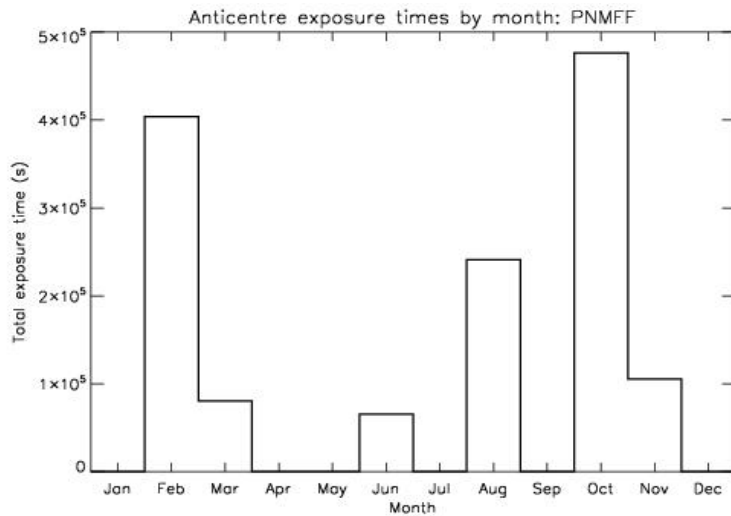


XMM
EPIC
MOS

Jenny Carter (jac48@star.le.ac.uk)
3rd EPIC BG WG Meeting
MPE, Germany 02/05/06



University of
Leicester

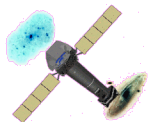
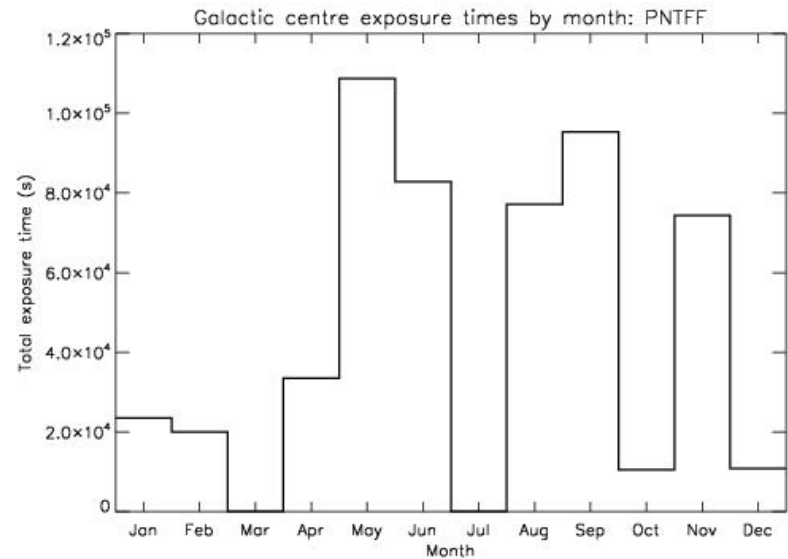
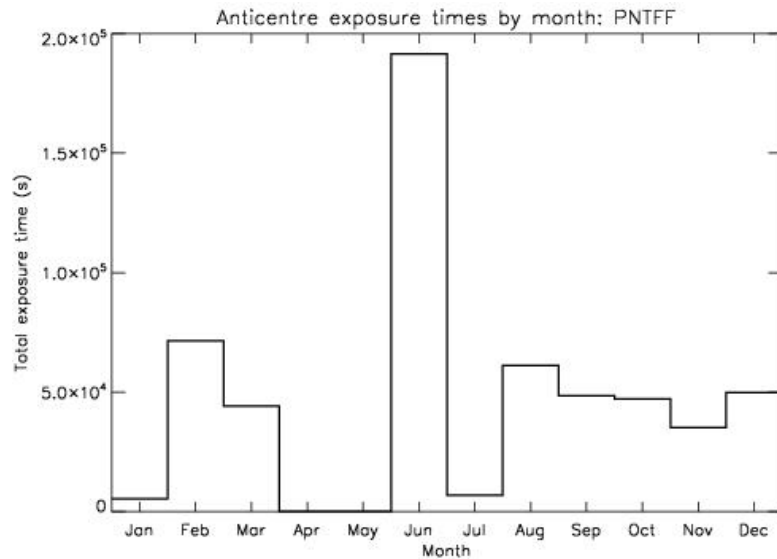


XMM
EPIC
MOS

Jenny Carter (jac48@star.le.ac.uk)
3rd EPIC BG WG Meeting
MPE, Germany 02/05/06



University of
Leicester



XMM
EPIC
MOS

Jenny Carter (jac48@star.le.ac.uk)
3rd EPIC BG WG Meeting
MPE, Germany 02/05/06



University of
Leicester