

Gemini Observatory Science Operations

A J Adamson

Associate Director for Operations,
Gemini Observatory

Contents

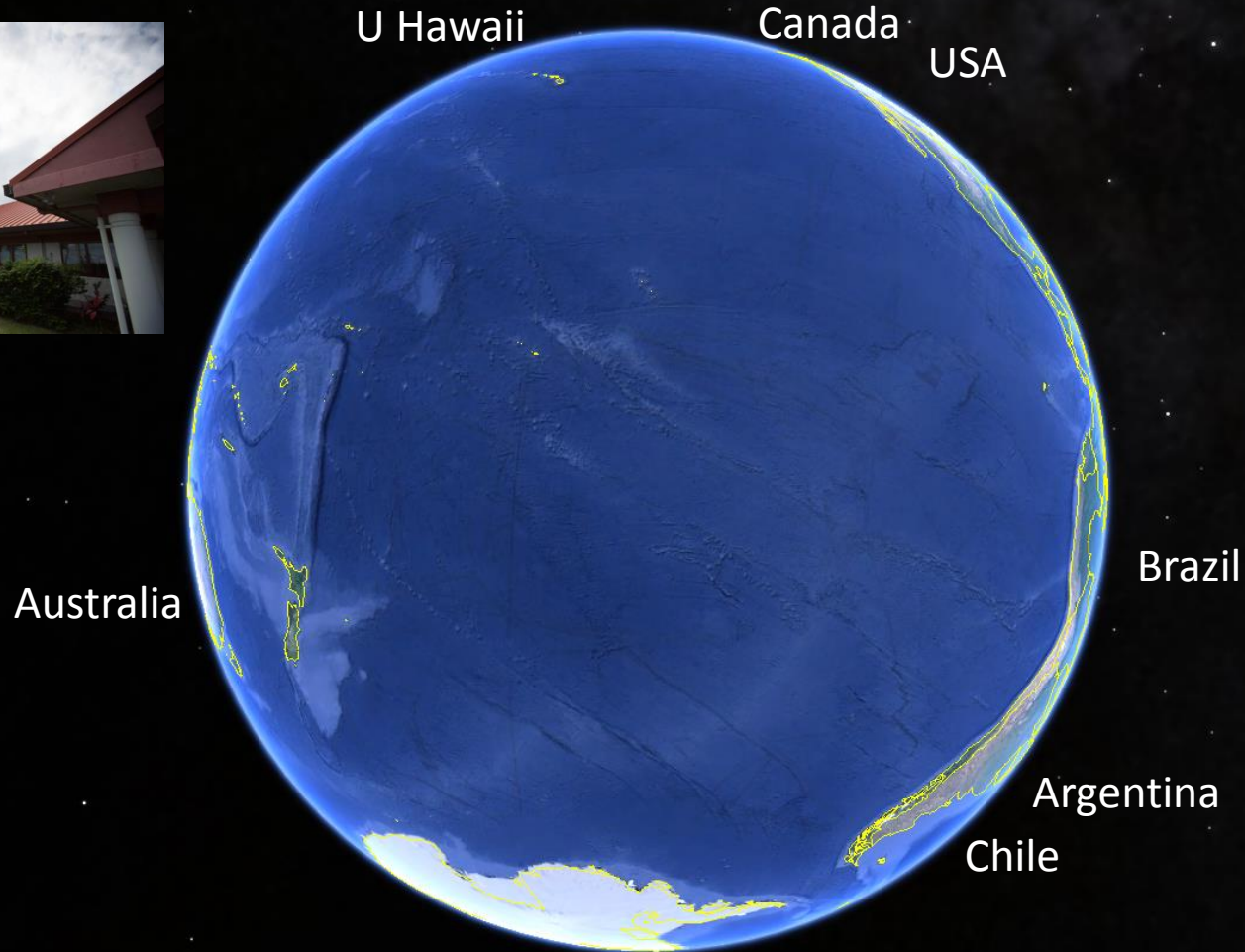
INCLUDED

- Partnership
- Telescopes and Instrumentation
- Support Organization & Responsibilities
- Modes, Timeline, Current state & Evolution
- Future Developments

NOT INCLUDED

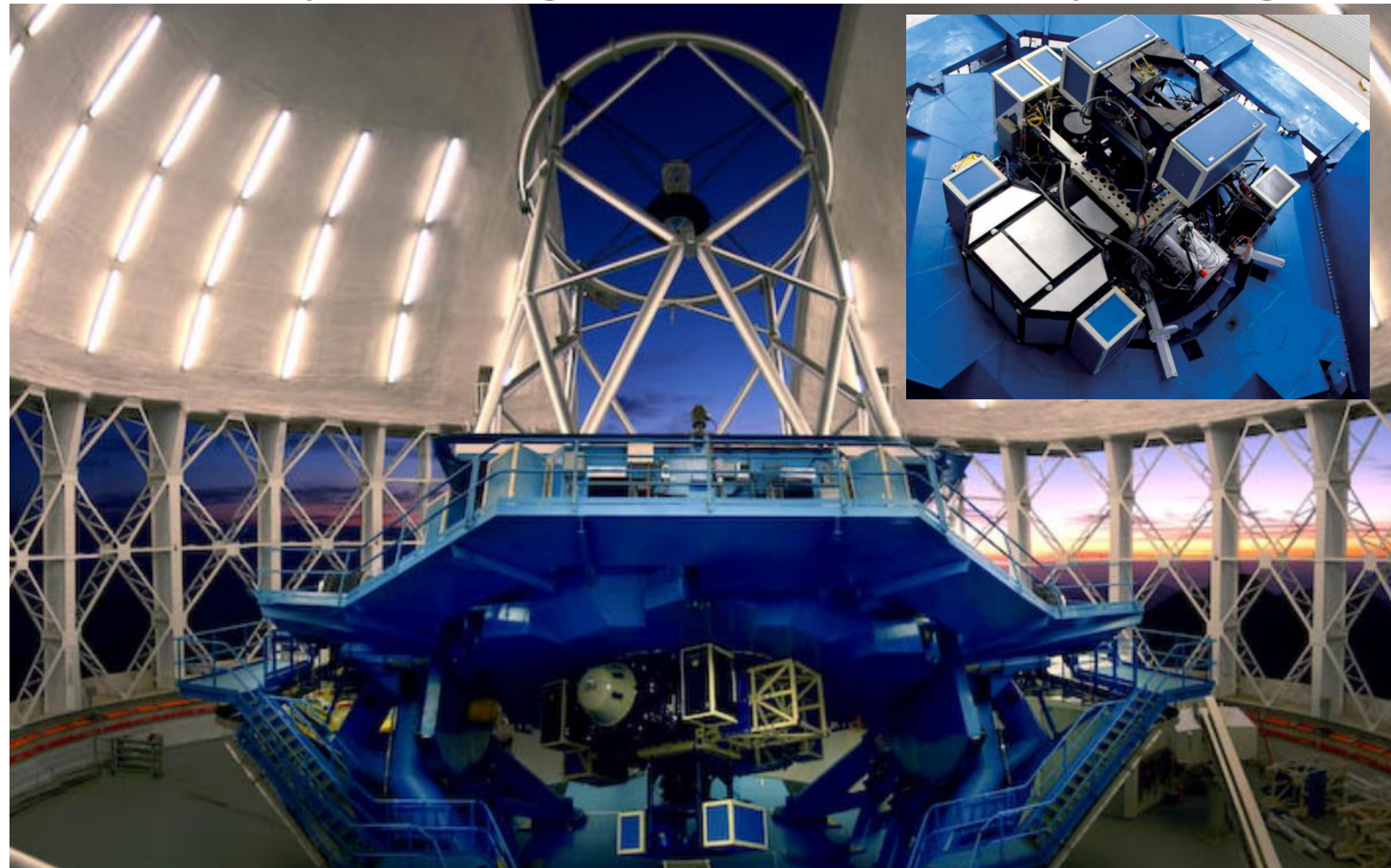
- Governance
- Time allocation details
- Data reduction
- Science Archive
- Post-UK Transition & Sustainability Activities

The Gemini Partnership



Note: UK Withdrawal completed end 2012.
Full financial impact by end of 2015.

Telescope Design & Instrument package



Instrumentation

North

- ALTAIR – facility AO bench (IR at present)
- GMOS – Optical imager/spectrograph/IFU
- GNIRS – NIR spectrograph
- NIFS – NIR IFU spectrograph
- NIRI – NIR imager

North Visitors (at present)

- TEXES – MIR high-resolution spectrograph
- DSSI – optical diffraction-limited speckle camera

North recently retired

- Michelle – MIR imager/spectrograph

South

- Canopus – facility AO bench
- FLAMINGOS-2 – NIR imager/spectrograph
- GMOS - Optical imager/spectrograph/IFU
- GSAOI – high-res imager for use with Canopus

South upcoming

- GPI – extreme AO IFU/polarimeter

South recently retired

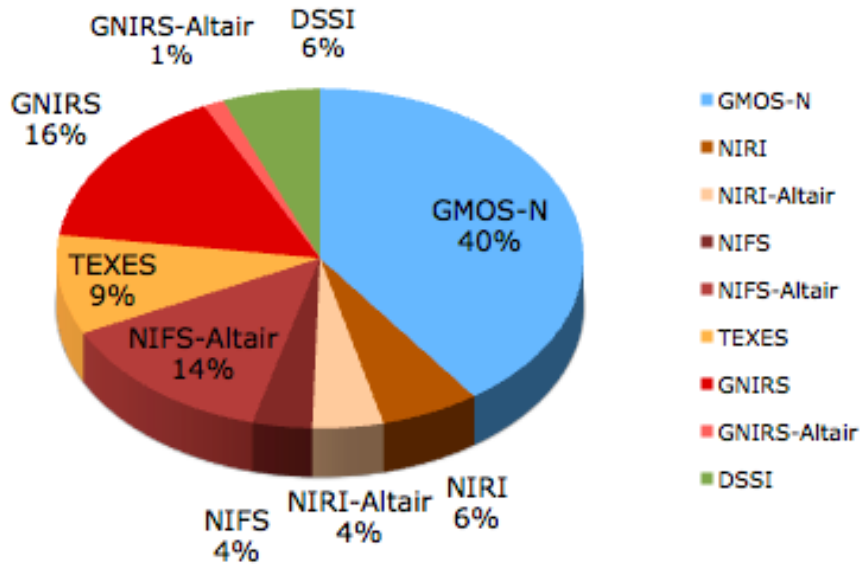
- NICI – NIR AO exoplanet imager
- T-ReCS – MIR imager/spectrograph

Summary: workhorse facilities north and south (not necessarily identical); specialist/niche instruments on top, increasingly supplemented by visitors in the north. 4 facility instruments+AO is supportable in the post-UK future.

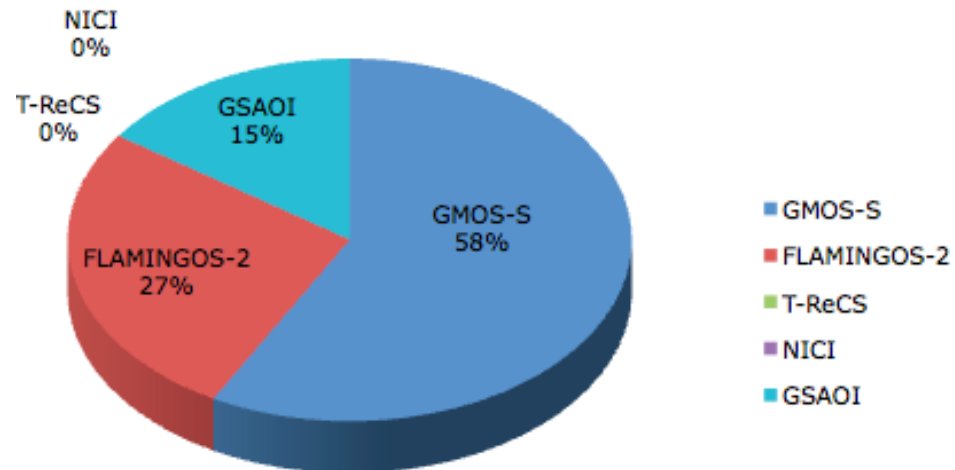
Future: plan to accommodate one new instrument per 2-3 years (Next: GHOS high-resolution optical spectrograph)

Instrument Demand (2013B)

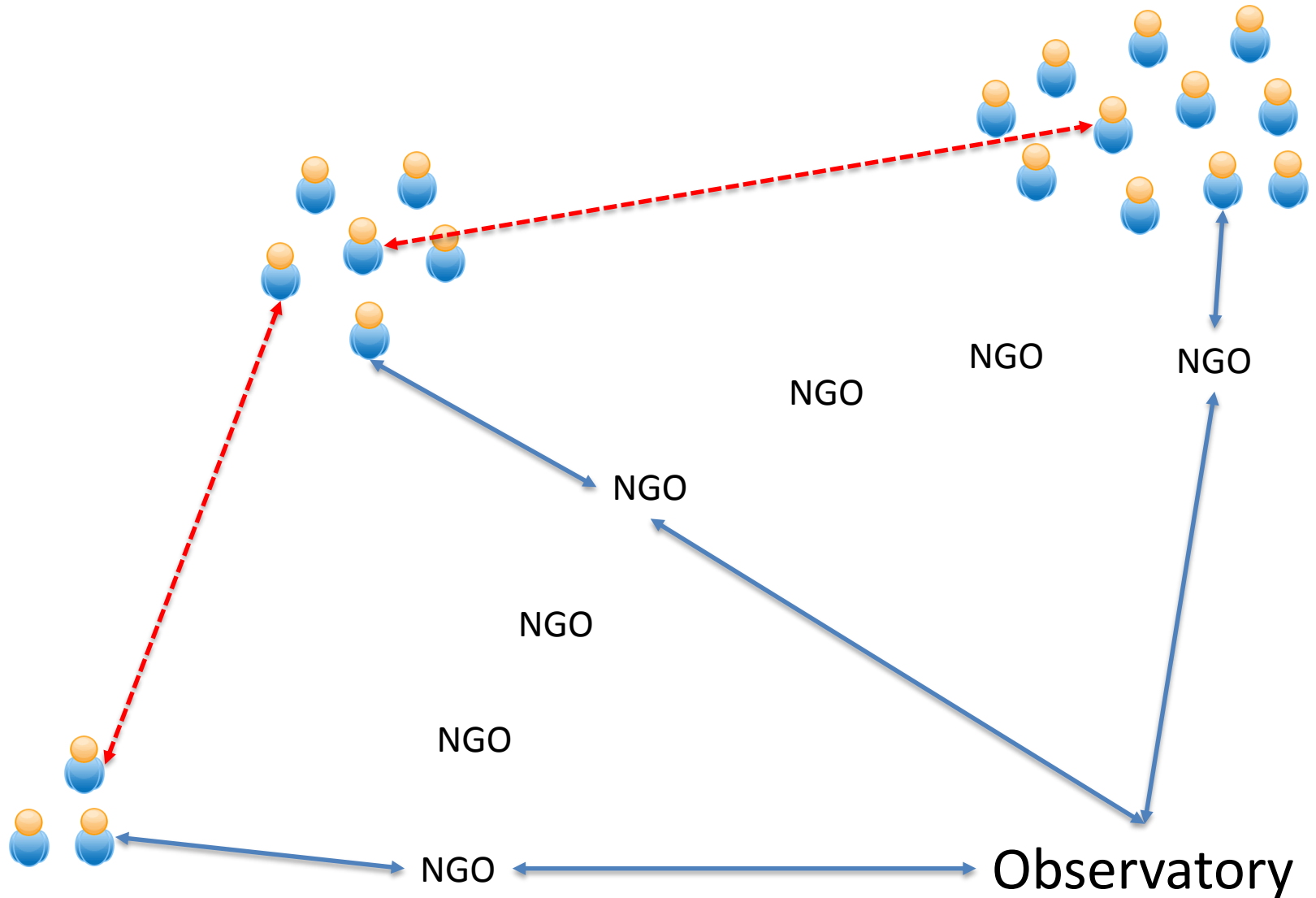
Fraction of Time by Instrument: Gemini North



Fraction of Time by Instrument: Gemini South



Operations Organization



Processes & Responsibilities

NGO

- General user education
- Local web pages
- Phase I support
- National TAC process
- Phase II support & iteration
- Helpdesk

Observatory

- International TAC process
- Phase II iterations
- Final phase II checking
- In-semester support
- Observing (**increasingly non-research observers**)
- Classical run support
- Data checking & archiving
- Data Reduction s/w provision
- Helpdesk

Observing Modes

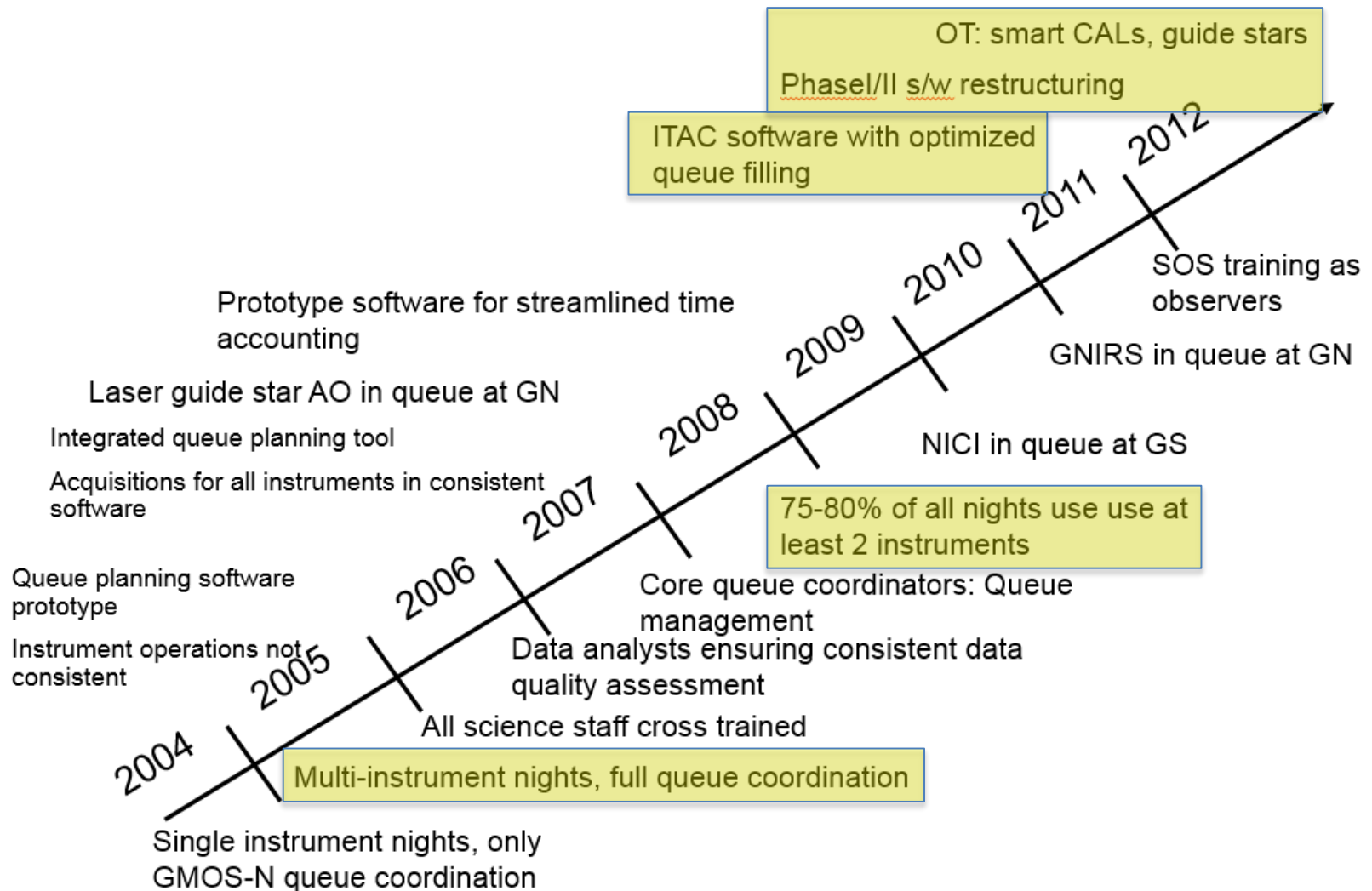
Mode	Approx Fraction	Access
Queue ⁰	>90% (by demand)	Partnership ¹ Recent addition: eavesdropping
Classical ²	<10% by demand	Partnership
Target of Opportunity	~20% of executed time	Partnership, <i>via queue</i>
Director's Discretionary Time	7% including staff time	Open, <i>via queue</i>
Poor-weather proposals	Few %, not topsliced (fills otherwise empty time)	Partnership, <i>asynchronous, via queue</i>

⁰ Banded by TAC priority, completion rate targets set by Board

¹ Partners can elect to operate “open skies” policy – e.g. US

² Classical is pre-prepared but flexible

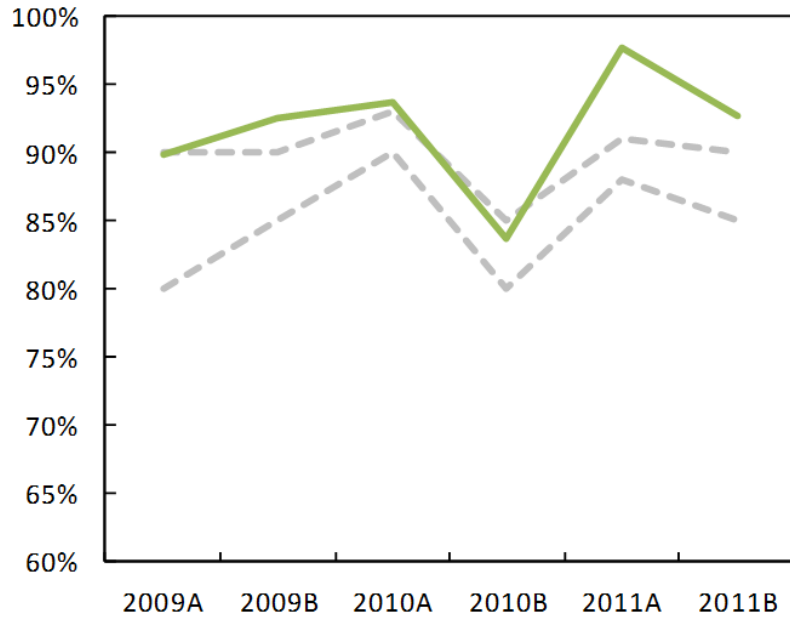
Science Operations Timeline



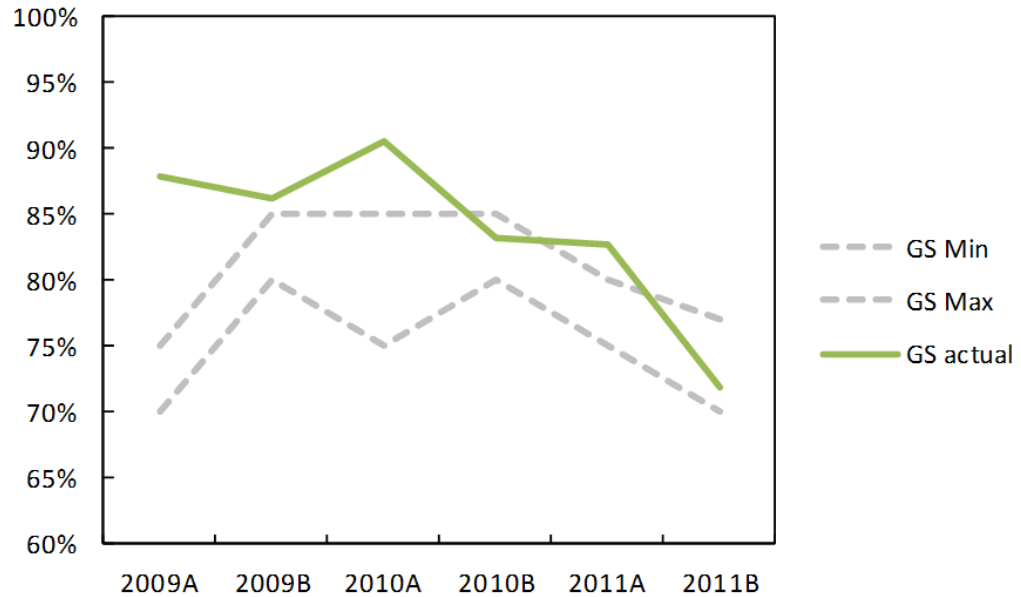
Current Ops: some features

- Science fraction
- Queue planning
- Time accounting & balancing

Science Time Requests

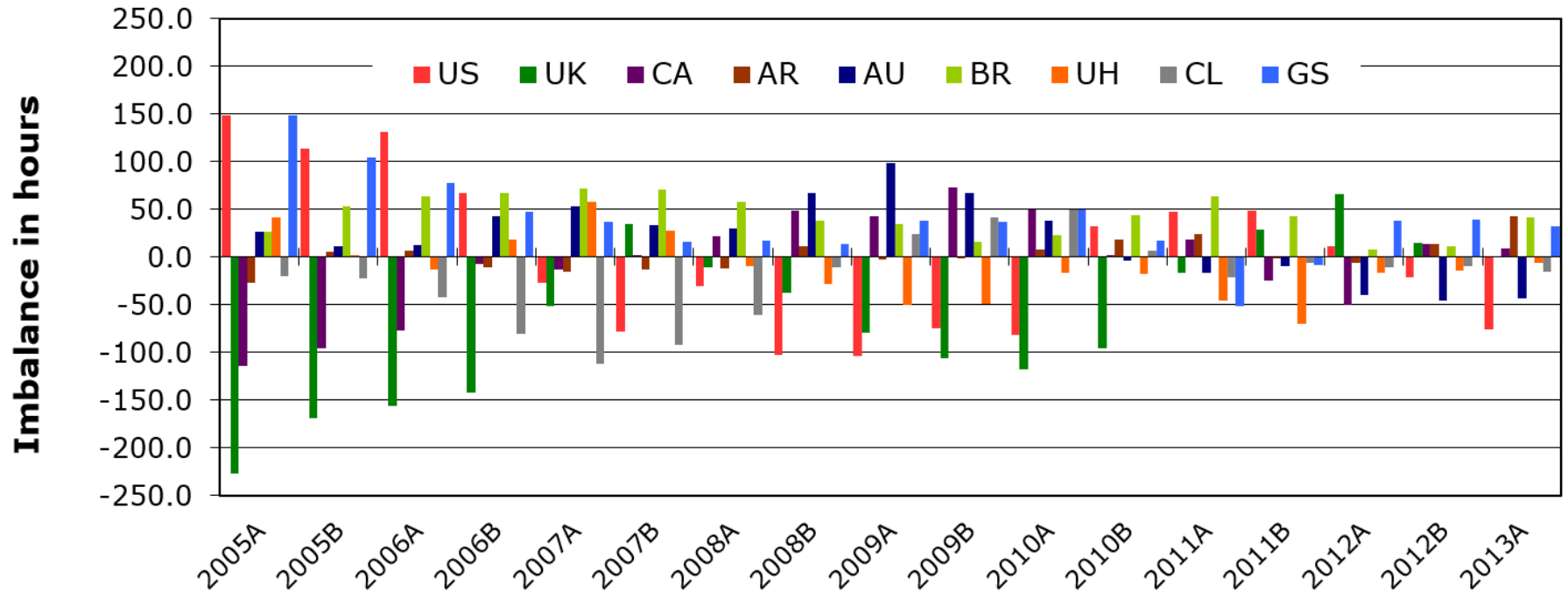


--- GN Min
--- GN Max
— GN actual



--- GS Min
--- GS Max
— GS actual

Partner Shares & Balancing

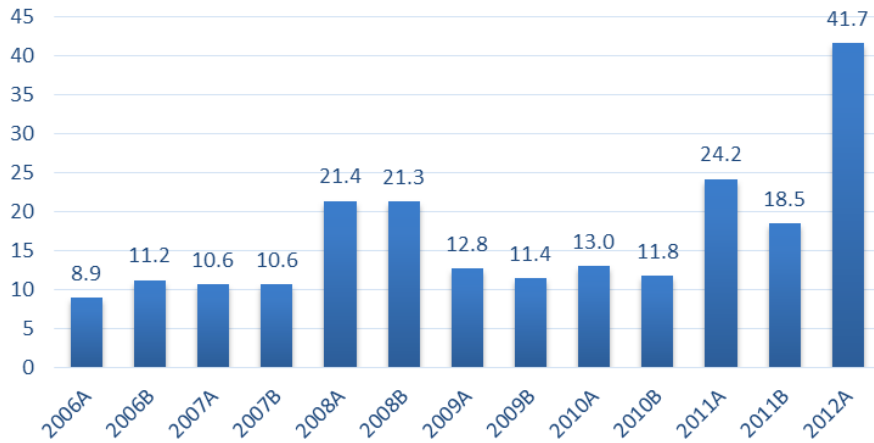


Past Evolution

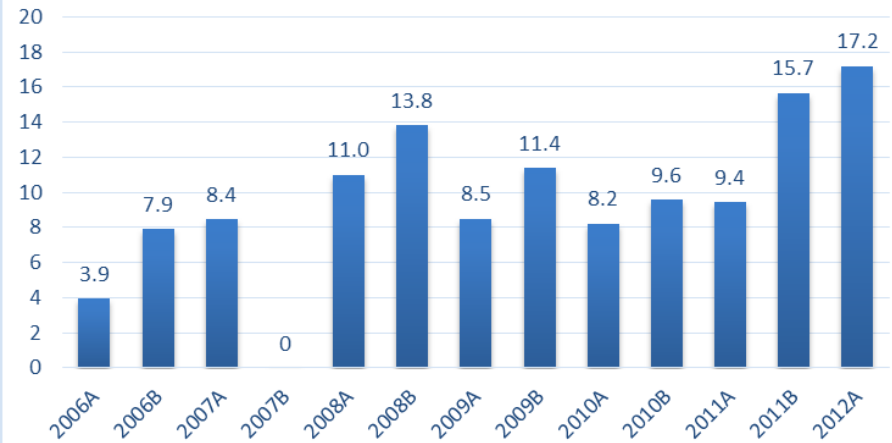
- Classical / Queue distribution
- Programme length
- Joint (Collaborative) Programmes

Classical & Queue

NORTH Queue/Classical



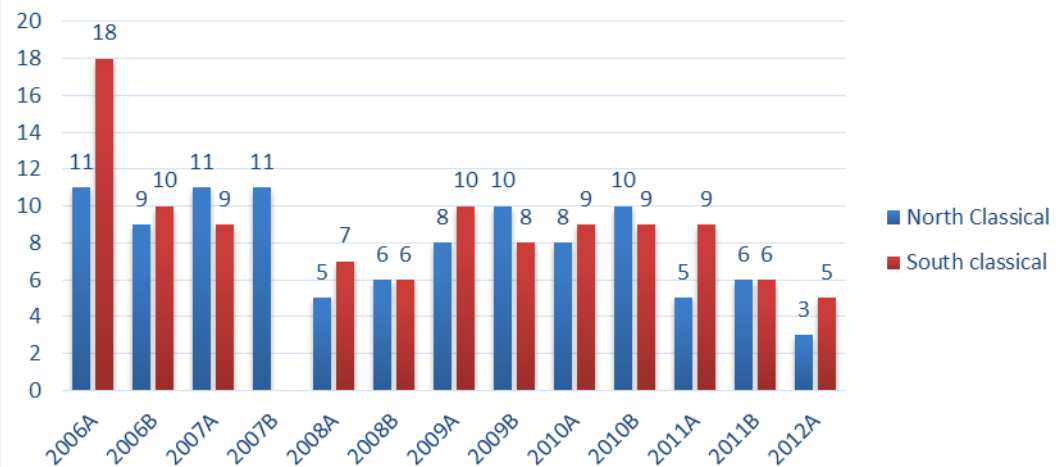
SOUTH Queue/Classical



Data on number of allocated programmes

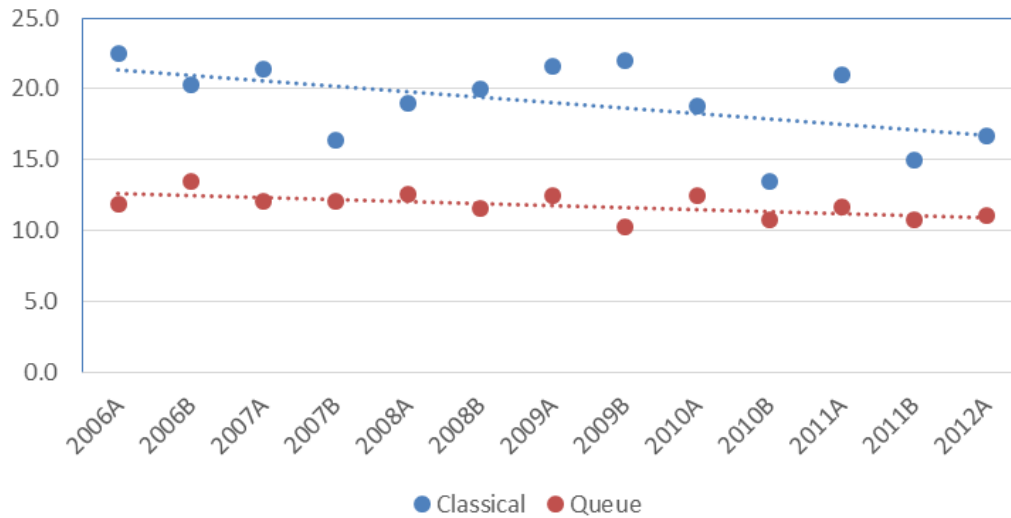
- Allocated classical time has been on a generally downward trend
- Classical requests always dominated by the US

NORTH & SOUTH Classical

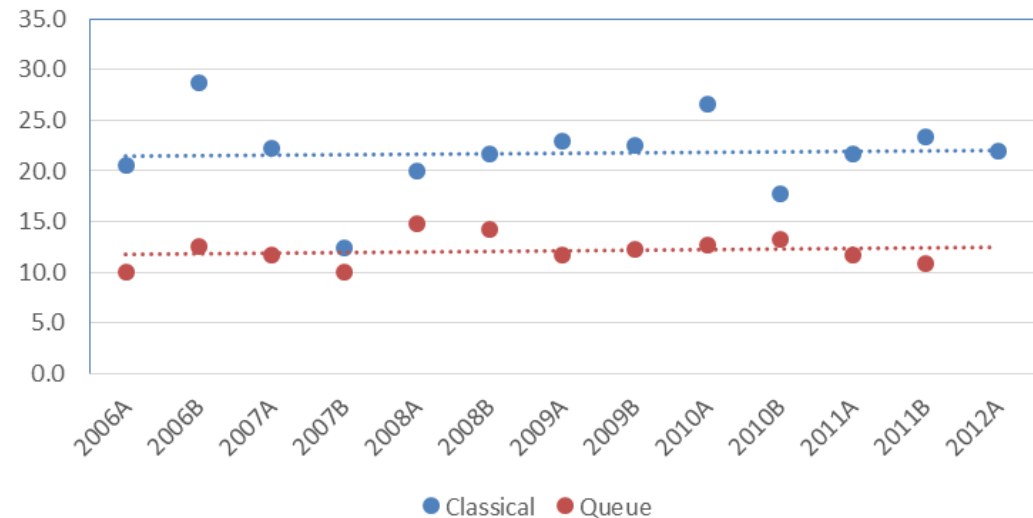


Average Allocation per programme

NORTH AVERAGE ALLOCATIONS



SOUTH AVERAGE ALLOCATIONS



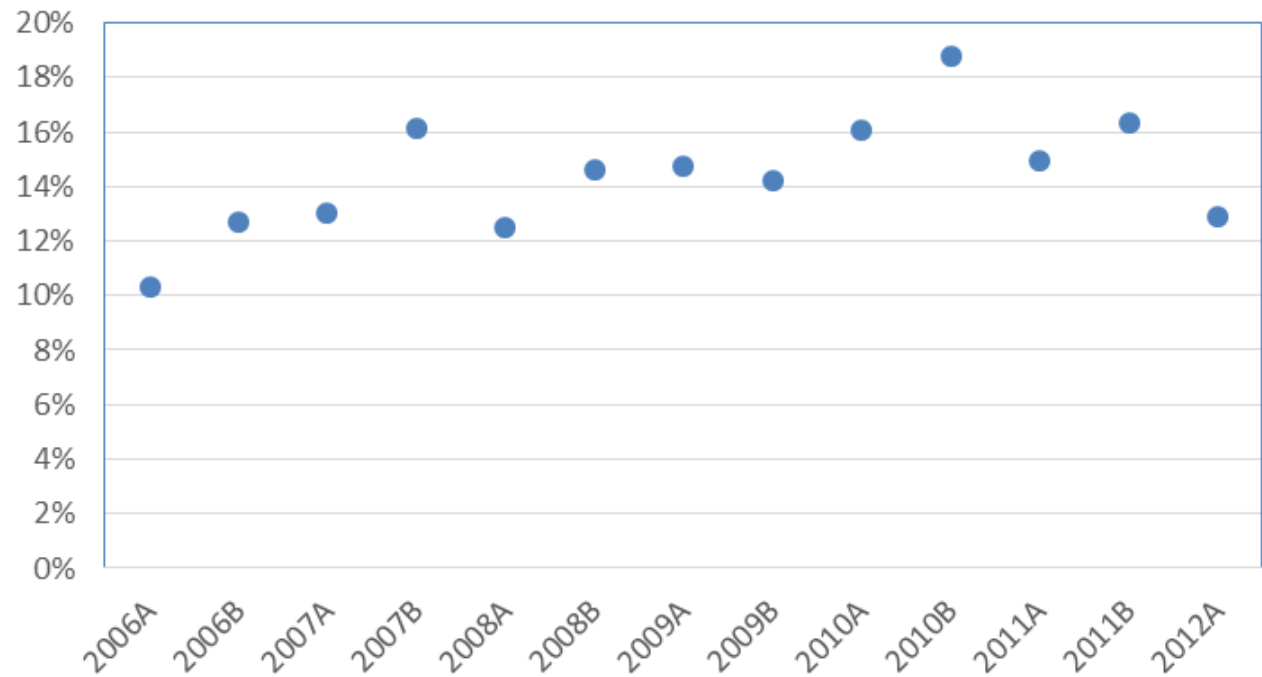
Data on hours allocated to programmes

- North programmes are getting shorter
- South programmes are not!

Multi-partner Programmes

- Joint Proposals explicitly involve co-Is from more than one partner
- Fraction of successful proposals which are joint has been on a gradual increasing trend since 2006
- All but ~5% of all joint proposals have been for queue time

Joint Proposals In Proportion to Total



Future Evolution

- Observing/proposal modes
 - More options for PIs
 - Increase science productivity
 - Closer contact with community
 - Increase collaborative opportunities
 - Financial drivers also involved
- User support through the science lifecycle
 - Increase publication rate per programme

Future Observing Modes

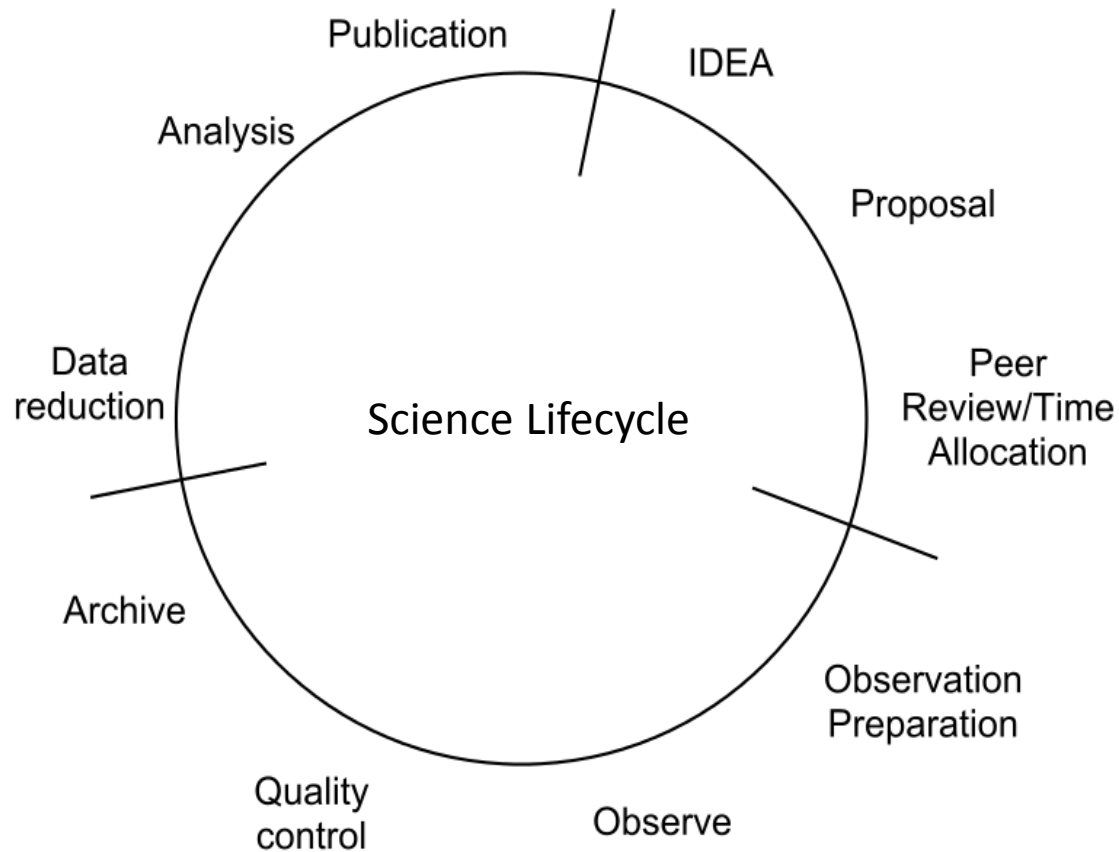
Mode	Approx Fraction	Access
Queue	>90% by demand	Partnership
Classical	<10% by demand	Partnership
Target of Opportunity	~20% of executed time	Partnership via queue
Director's Discretionary Time	7% including staff time	Open
Poor-weather proposals	Few %, not topsliced	Partnership, asynchronous

Future Observing Modes

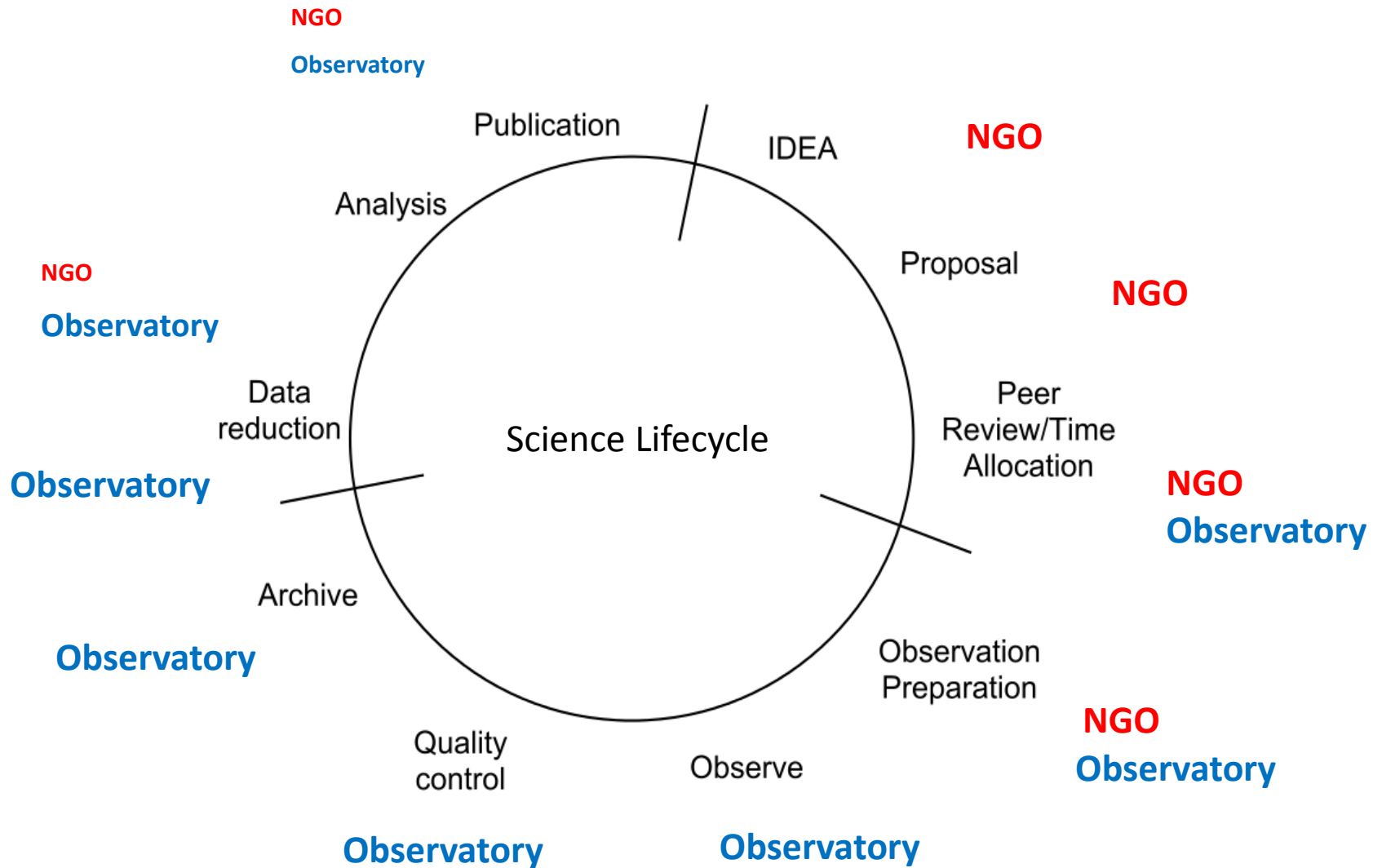
Mode	Approx Fraction	Access
Queue	>90% by demand	Partnership
Classical*	<10% by demand	Partnership
Target of Opportunity	~20% of executed time	Partnership via queue
Director's Discretionary Time	7% including staff time	Open
Poor-weather proposals	Few %, not top-sliced	Partnership, asynchronous

Mode	Approx Fraction	Access
Large and Long Programmes	20% initially	Partnership (Elective pool); via annual LPTAC
Fast Turnaround (monthly)	<10% initially	Partnership; peer-reviewed (TBD)
Remote Observing	?	Partnership, post-2016
"Priority Visitor" observing	2014B (LLPs first)	Partnership

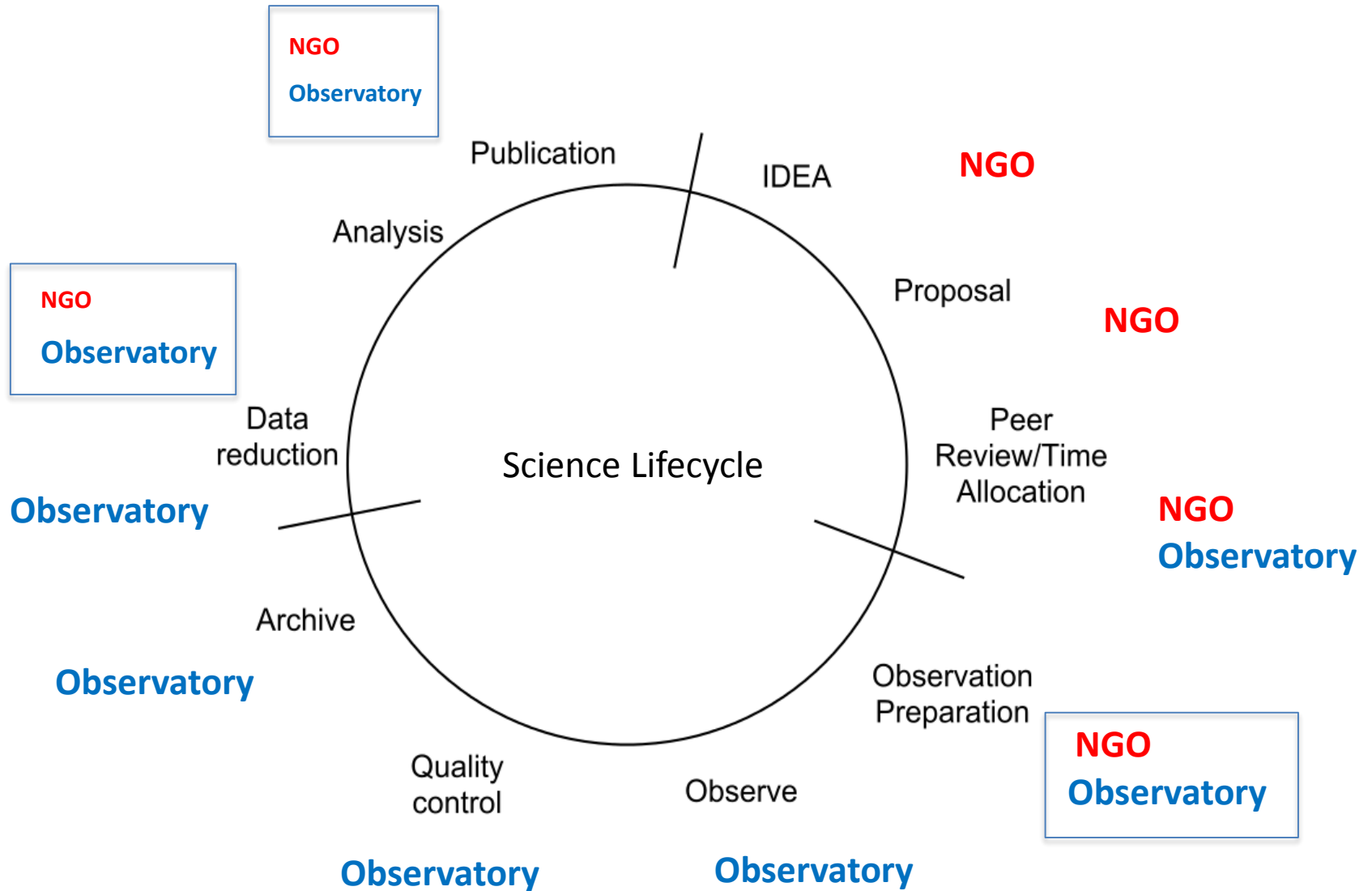
Effort Distribution



Effort Distribution



Effort Distribution

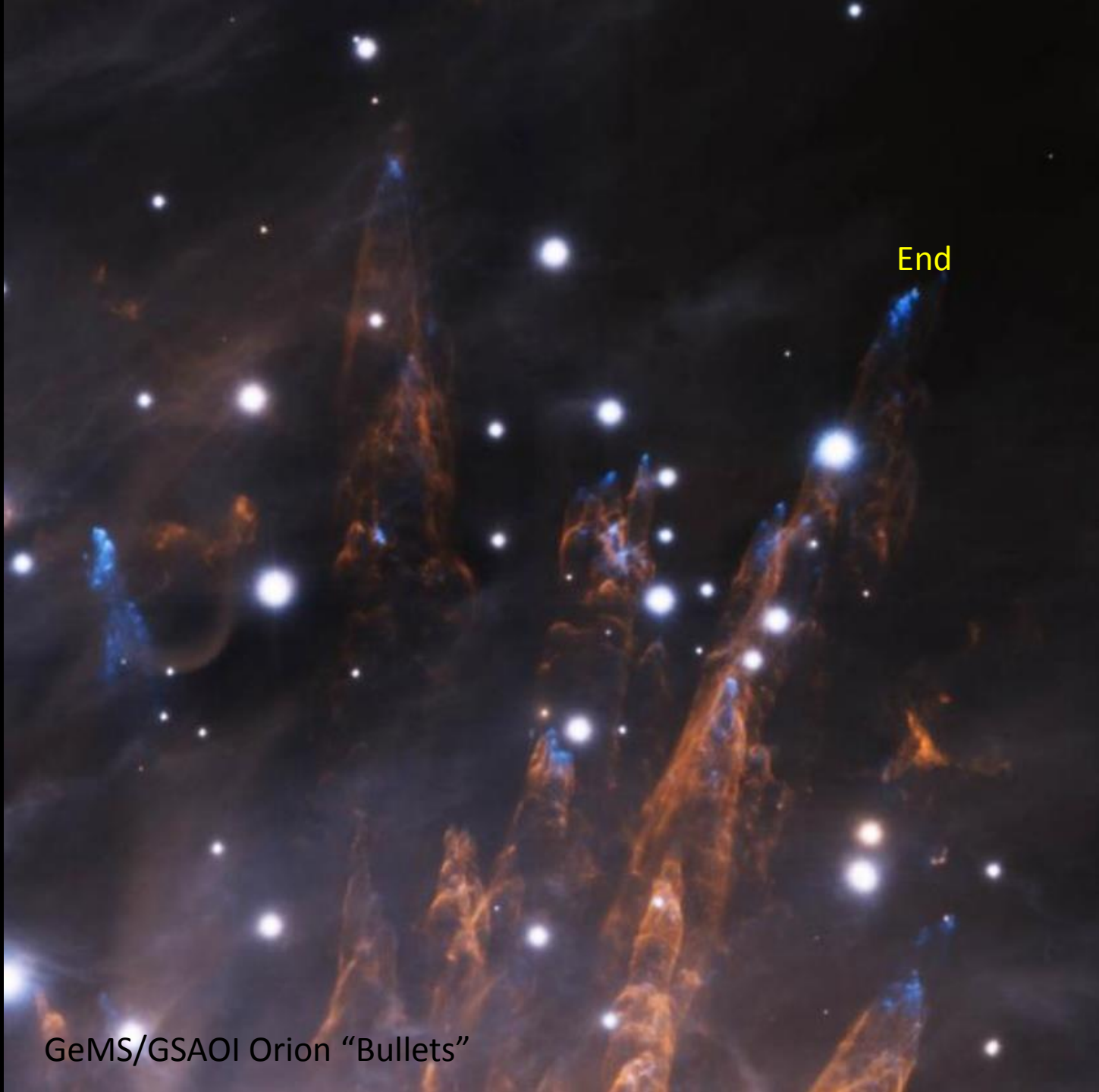


Where to fill in the gaps



<http://www.gemini.edu/>

And go to the "science" pulldown



End

GeMS/GSAOI Orion "Bullets"