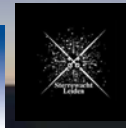
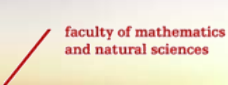


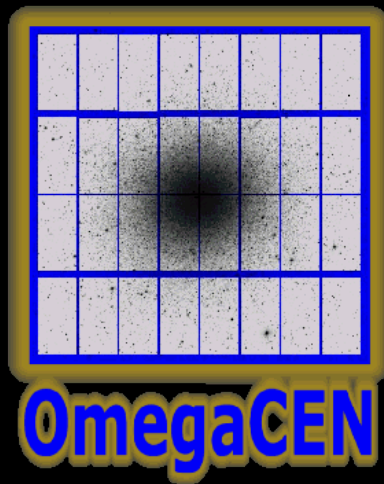
# Space and Ground-Based Survey Operations at OmegaCEN + Target

**Gijs A. Verdoes Kleijn**

OmegaCEN, Kapteyn Astro Institute

Target, University of Groningen



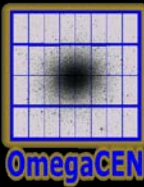


Pool

Astronomical IT experts + Astronomers

- Wide-field datacenter
- Survey operations
- Science support center
- DFS expertise center

# "3 Datacenter"



## Instruments

### OMEGACAM@VST

raw science reduced science coadded science  
sourcelists proprietary

Find data for the OMEGACAM instrument.

### VIRCAM@VISTA

raw science reduced science coadded science  
sourcelists proprietary

Find data for the VIRCAM instrument.

### WFI@2.2m

raw science reduced science coadded science  
sourcelists world

Find data for the WFI instrument.

### MEGACAM@CFHT

raw science reduced science coadded science  
sourcelists world

Find data for the MegaCAM instrument.

### WFC@INT

raw science reduced science coadded science  
sourcelists world

Wide-Field Camera on the Isaac Newton Telescope at La Palma.

### SUP@Subaru

raw science reduced science world

Suprime-Cam data from the Subaru telescope on Mauna Kea, Hawaii.

### HST ACS

reduced science sourcelists world

Data from the Advanced Camera for Surveys instrument aboard the Hubble Space Telescope. Only Drizzled images (in the form of ReducedScienceFrames) are currently supported. See this [note on ACS data](#) for more information.

### DECam@CTIO

raw science reduced science coadded science  
sourcelists world

Find data for the WFI instrument.

### SDSS

SDSS-Photoz-DR7 SDSS-SpecObjAll-DR7  
SDSS-PhotoObjAll-DR7 world

Browse the SDSS DR7 catalog locally as SourceLists.

### 2MASS PSC

2MASS PSC SourceList world

The 2MASS Point Source Catalog is available as a SourceList in our database.

### UKIDSS

UKIDSS DR3 SourceList world

The WFCAM Science Archive Large Area Survey sources are available as a SourceList in our database.

### USNO-B1.0

USNO-B1.0 SourceList world

US Naval Observatory B1.0 catalog, accessible as a SourceList.

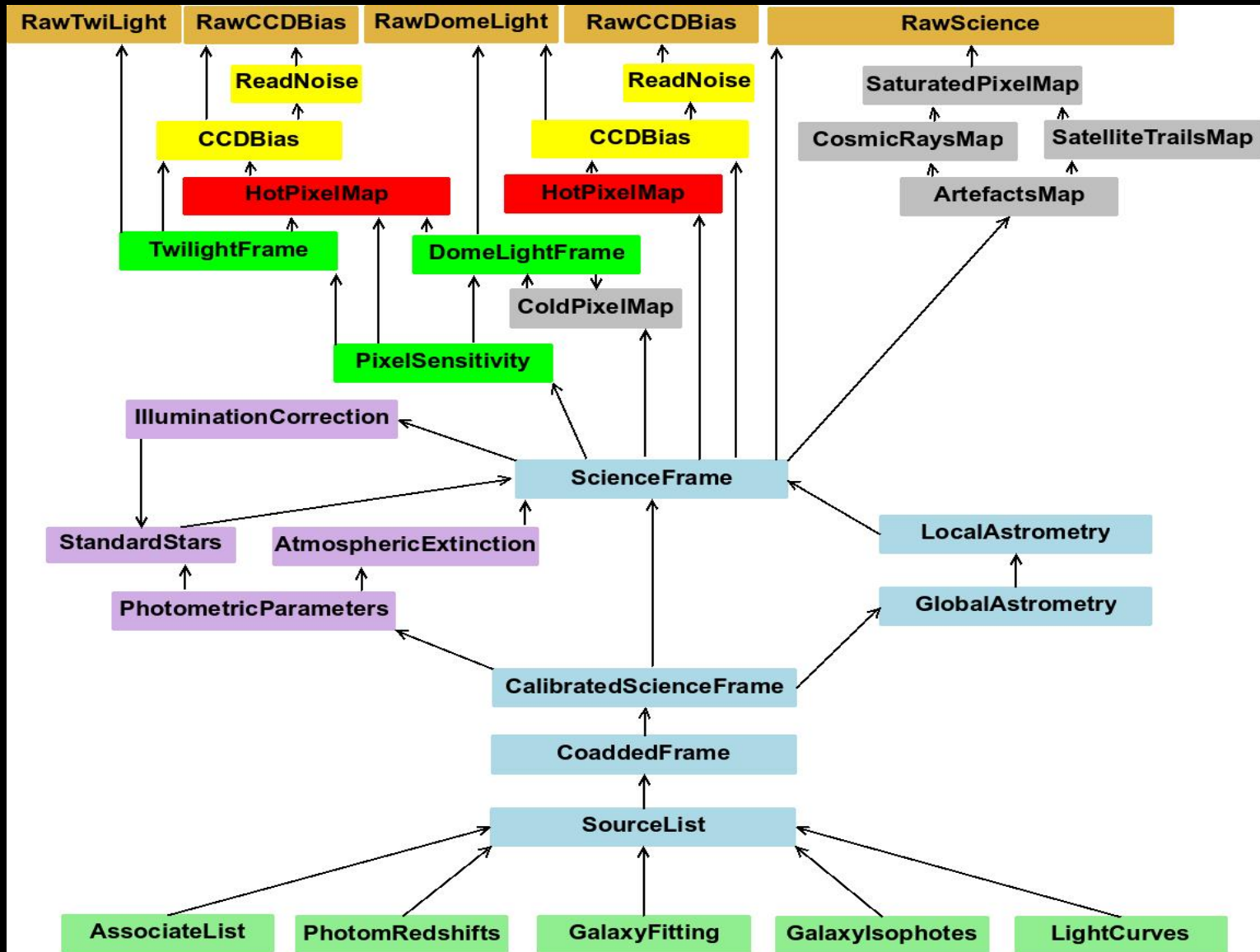
### LOFAR

LOFAR data archive world

Find data for LOFAR.

```
+ process params (up) (link)
+   + astrom
+   - regi
+     - raw (up) (link)
+       + imstat
+       + instrument (up) (link) 1
+       + observing_block (up) (link) 5
+       + overscan_x_stat 3
+       + overscan_y_stat
+       + prescan_x_stat
+       + prescan_y_stat
+       + raw_fits_data (up) (link)
+       + template (up) (link)
+         • NAXIS2 4200
+         • OBJECT KIDS_46.7_-26.2
+       - weight (up) (link)
```

# Data-centric + backward chaining (see Valentijn, Buddelmeijer)





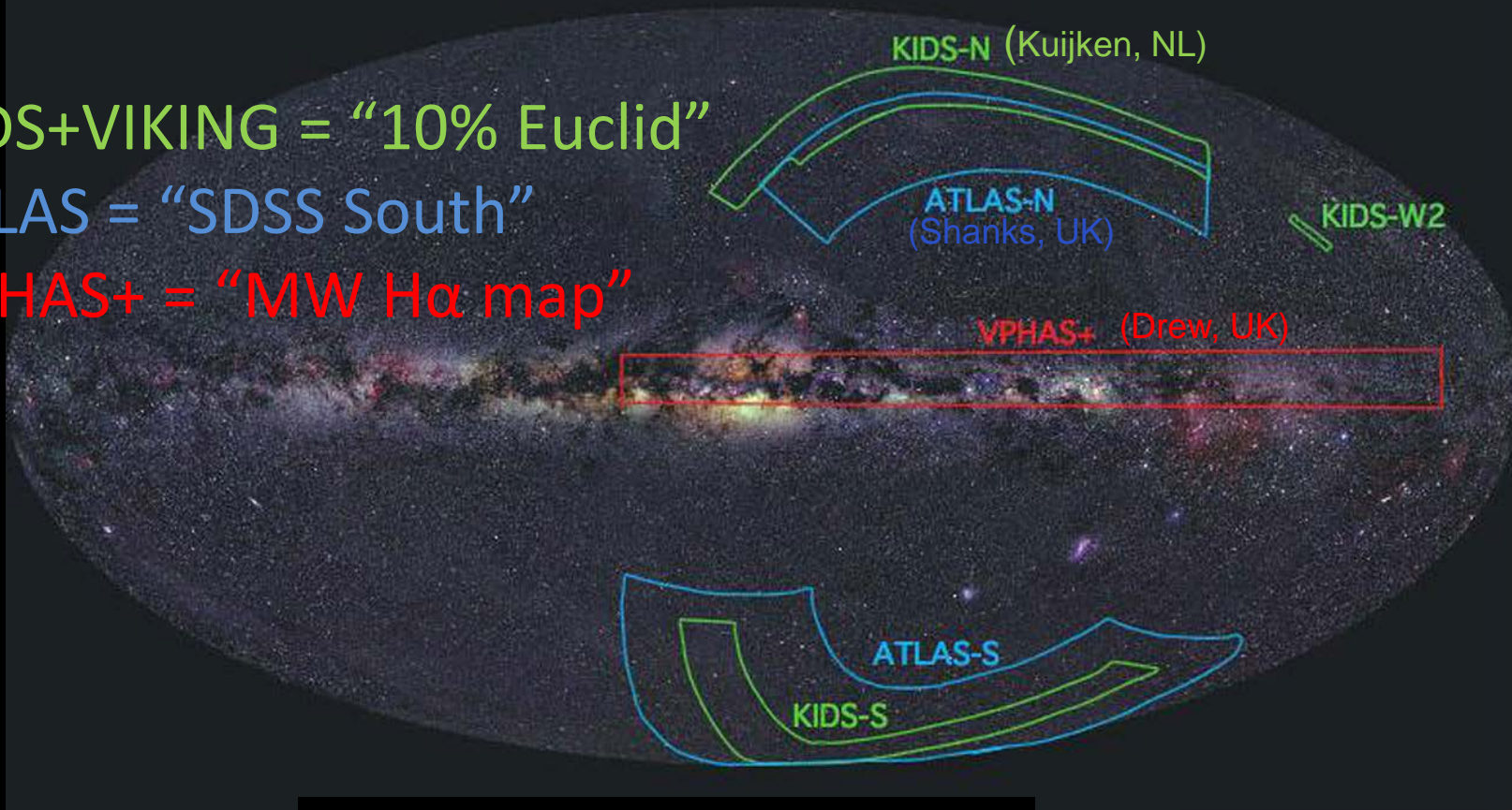
# The OmegaCAM Public Surveys



KiDS+VIKING = "10% Euclid"

ATLAS = "SDSS South"

VPHAS+ = "MW H $\alpha$  map"



Available in:



**KIDS** obs. progress: 22%

observing blocks raw science coadded science sourcelists proprietary

Find data for the KIDS project.

---

**ATLAS** obs. progress: 56%

observing blocks raw science coadded science sourcelists world

Find data for the ATLAS project.

---

**VPHAS+** obs. progress: ~21%

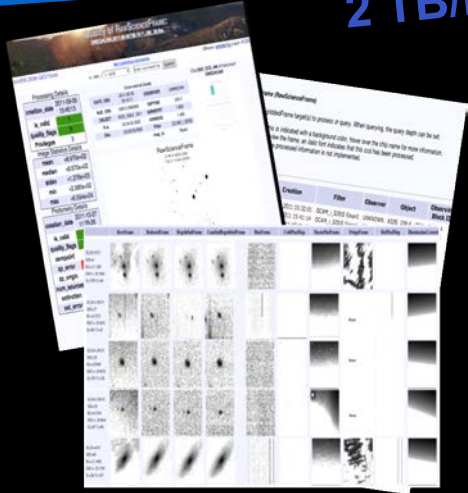
observing blocks raw science coadded science sourcelists world

Find data for the VPHAS+ project.



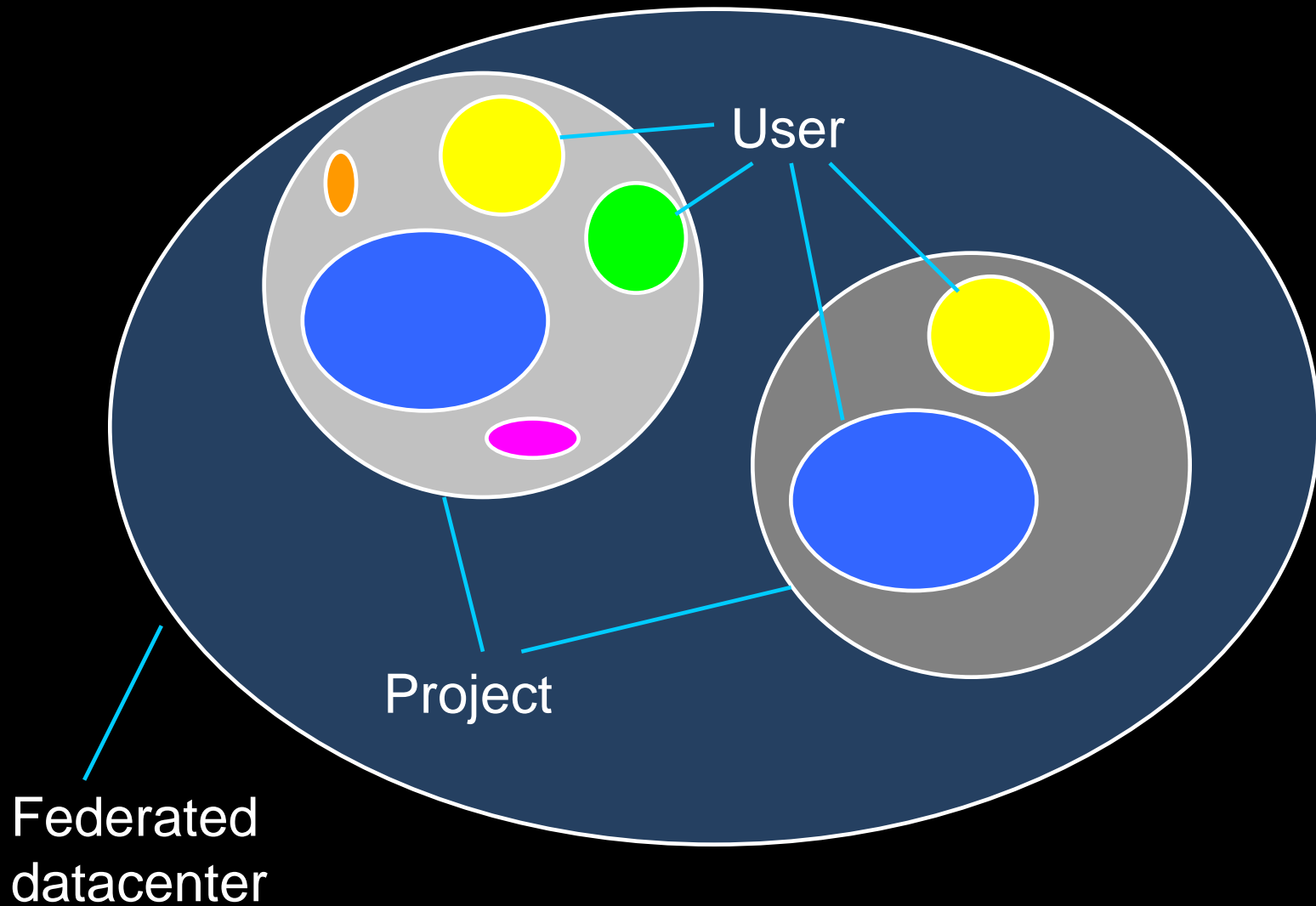
# for federated survey handling

- **Information system:** monitor, calib, pipeline, archive, science analysis
- 11 European nodes
- 260 users (astro,prod,dev)
- Federated DBase, storage, compute
- 2Pb storage, 45M files
- Web + Python user interface



2 TB/month

# Survey data management



DBName: [awqvar00es](#) project: KIDS

Quality of CoaddedRegriddedFrame  
 AND-OMEGACAM OCAM u SDSS-Coadd-Sci-56338.9642823-  
 55f3d3f06071b11409ec469b4d90e416ed335ed.fits

see 22 previous comments  
[comment submission form](#)

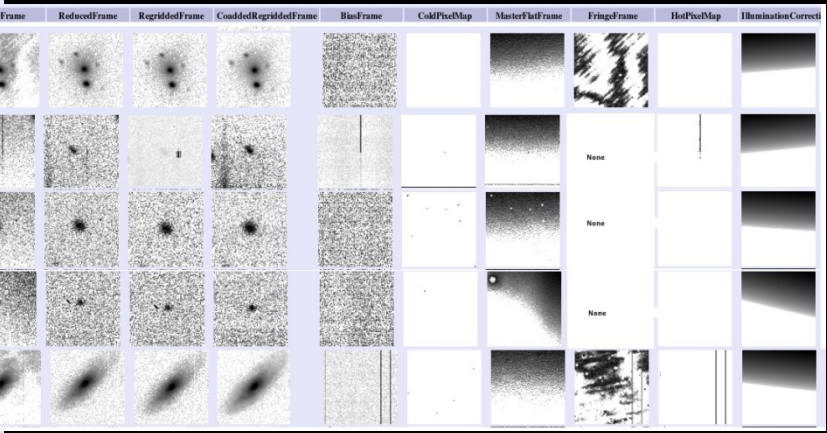
Chip of Instrument OMEGACAM

Observational Details		OB SERVER
DATE_OBS		
RJD_OBS		EXPTIME
OBJECT	KIDS_32_4_-34.1	AIRM STRT
obs_id	813375	AIRMEND
R.A.	32.4	Filter
Dec.	-34.12637363	mag_id
		SloanU

CoaddedRegriddedFrame  
 1857C X 1859T pixel  
 61.51 X 66.32 arcmin

WeightFr  
 1857C X 1859T  
 61.51 X 66.32

Gastrometric  
 (global solution)



[Astro-WISE Portal](#) View object in: [DBView](#), [CaITS](#) or [Process](#)

### Processing Details

creation_date	2013-02-15 23:11
is_valid	0
quality_flags	0
Privileges	2

### Image Statistics Details

mean	+1.784e-12
median	+1.588e-13
stdev	+4.106e-10
min	-1.133e-06
max	+7.778e-07

### Astrometry Details

(derived from a global solution)

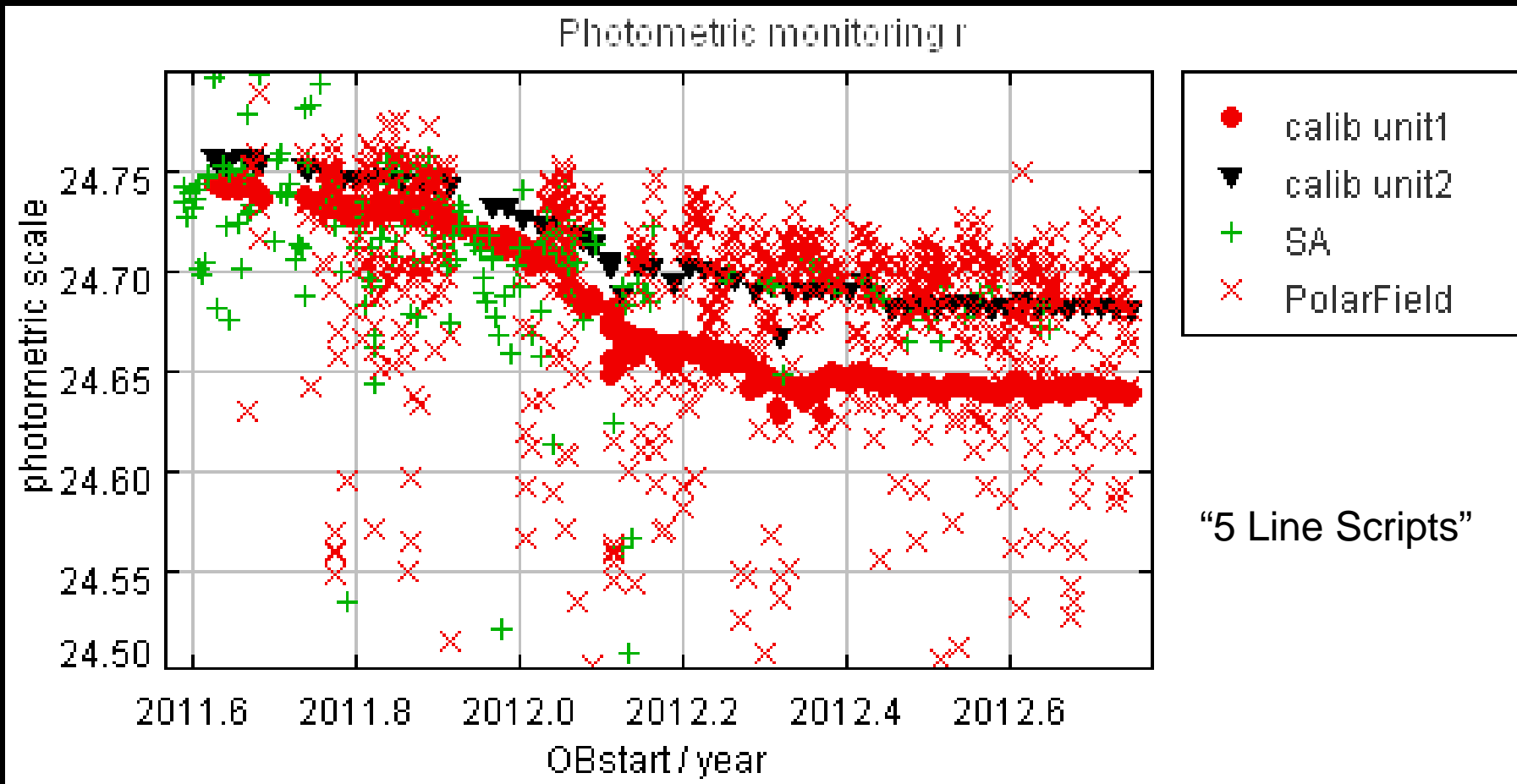
creation_date	2013-02-07 22:54:14
is_valid	128 good 0 bad
quality_flags	128 good 0 bad
SEEING	0.830
RMS	0.271
NREF	2280
SIG_DRA	0.187
SIG_DDEC	0.196

## Quality: flags & timestamps

- Target.verify() #automated inspection
- Target.quality\_flags #set by system
- Target.inspect() # User inspection
- Target.is\_valid=value #set by user  
0,1,2 = bad,OK,Qualified - ready for delivery
- Calib.timestamp\_start,end # validity time range



# Calibrate the instrument not the data



(See Hanuschik on Wed)



# 03 sep 13: KiDS DR1



Observing with ESO Telescopes
Science Software
Data Handling and Products
Science Archive Facility
Science Activities
Science and Technical Meetings
IT Services
Libraries
Publications
Job Opportunities

The Science Users Portal contains scientific and technical information for professional astronomers.

order to prepare, execute, process and exploit observations with the ESO facilities. They also provide information on the scientific activities taking place at ESO.

## First Release of ESO/VST Public Survey Imaging Data

03 September 2013

The [ESO Science Archive Facility](#) now provides community access to the first data products from the VST public survey projects. Following one year and a half of successful scientific operations of the VST, the ESO/VST public surveys have returned nearly 1.5 TB of reduced data products, which can be queried for and downloaded by the international community via dedicated query interfaces at the ESO Science Archive Facility ([http://archive.eso.org/wdb/wdb/adp/phase3\\_imaging/form](http://archive.eso.org/wdb/wdb/adp/phase3_imaging/form))

These surveys projects started surveying the Southern sky since October 2011, following the successful commissioning of the VST at the La Silla-Paranal observatory. A summary of their scientific goals and observing strategies is available at the following URL:

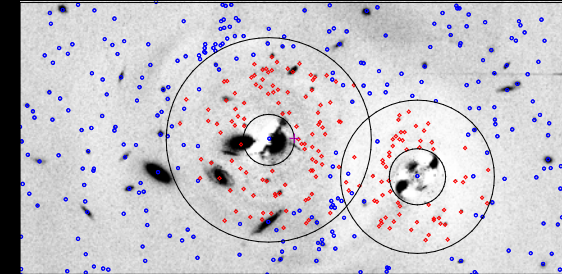
<http://www.eso.org/sci/observing/PublicSurveys/sciencePublicSurveys.html>.

The first release of data from the KiDS and VPHAS+ surveys (1.5 TB) covers mostly the period from October 2011 to September 2012 and consists of astrometrically and photometrically calibrated mosaiced and coadded images (each 1.0 deg<sup>2</sup>), weight maps and associated single band source lists in the different bands of each survey. Each public survey data release is accompanied by a comprehensive description that can be found at [http://www.eso.org/sci/observing/phase3/data\\_releases.html](http://www.eso.org/sci/observing/phase3/data_releases.html) By accessing the first VST public release, the ESO community benefits from joint efforts by ESO, the PIs of the VST public survey projects and their collaborators. More details can be found on [Phase 3 - News and Changes](#).

# Science analysis with




- Morphometry (Galfit, GalPhot)
- Photometric redshifts
- Variability analysis (MDIA, VODIA)
- Advanced catalog handling



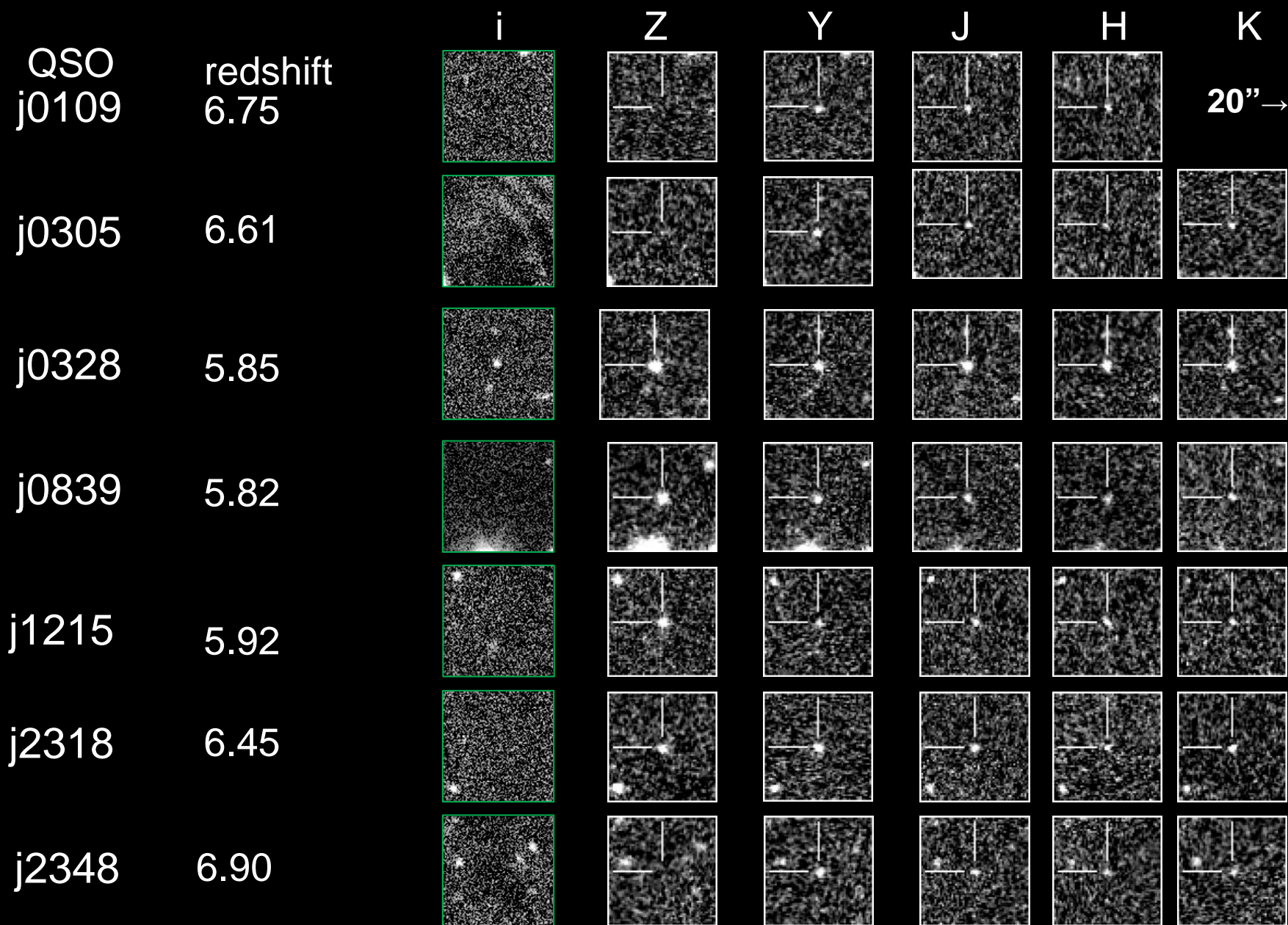
Query results for table GalFitSersic

Shown: 100 rows out of 901 entries, from project 'ALL'

SAMP: 1. [Test Java](#) 2. [Connect to the hub](#)  3. [Broadcast VOTable](#) [Help SAMP](#)

ROWNUM	project_id	quality view	+PRIVILEGES	object_id	re-process	creation_date	dmag [mag]	dN	dposang [deg]	dratio	dreff [pixel]	ds
1	1	quality view	4	<a href="#">object view</a>	re-process	2008-07-23 09:29:22	0.26	0.76	9.54	0.13	8.44	0.0
2	1	quality view	4	<a href="#">object view</a>	re-process	2008-07-23 09:29:22	0.25	0.64	27.21	0.32	0.24	0.0
3	1	quality view	1	<a href="#">object view</a>	re-process	2007-12-11 12:40:03	0.01	0.01	1.14	0.0	0.06	0.0
4	1	quality view	1	<a href="#">object view</a>	re-process	2007-12-11 12:39:59	0.01	0.01	0.64	0.0	0.05	0.0
5	1	quality view	1	<a href="#">object view</a>	re-process	2007-12-11 12:39:12	0.01	0.01	8.89	0.01	0.05	0.0
6	1	quality view	1	<a href="#">object view</a>	re-process	2007-12-11 12:39:12	0.01	0.01	5.3	0.01	0.05	0.0
7	1	quality view	1	<a href="#">object view</a>	re-process	2007-12-11 12:39:08	0.01	0.01	1.09	0.0	0.07	0.0
8	1	quality view	1	<a href="#">object view</a>	re-process	2007-12-11 12:39:08	0.02	0.03	2.28	0.02	0.18	0.0

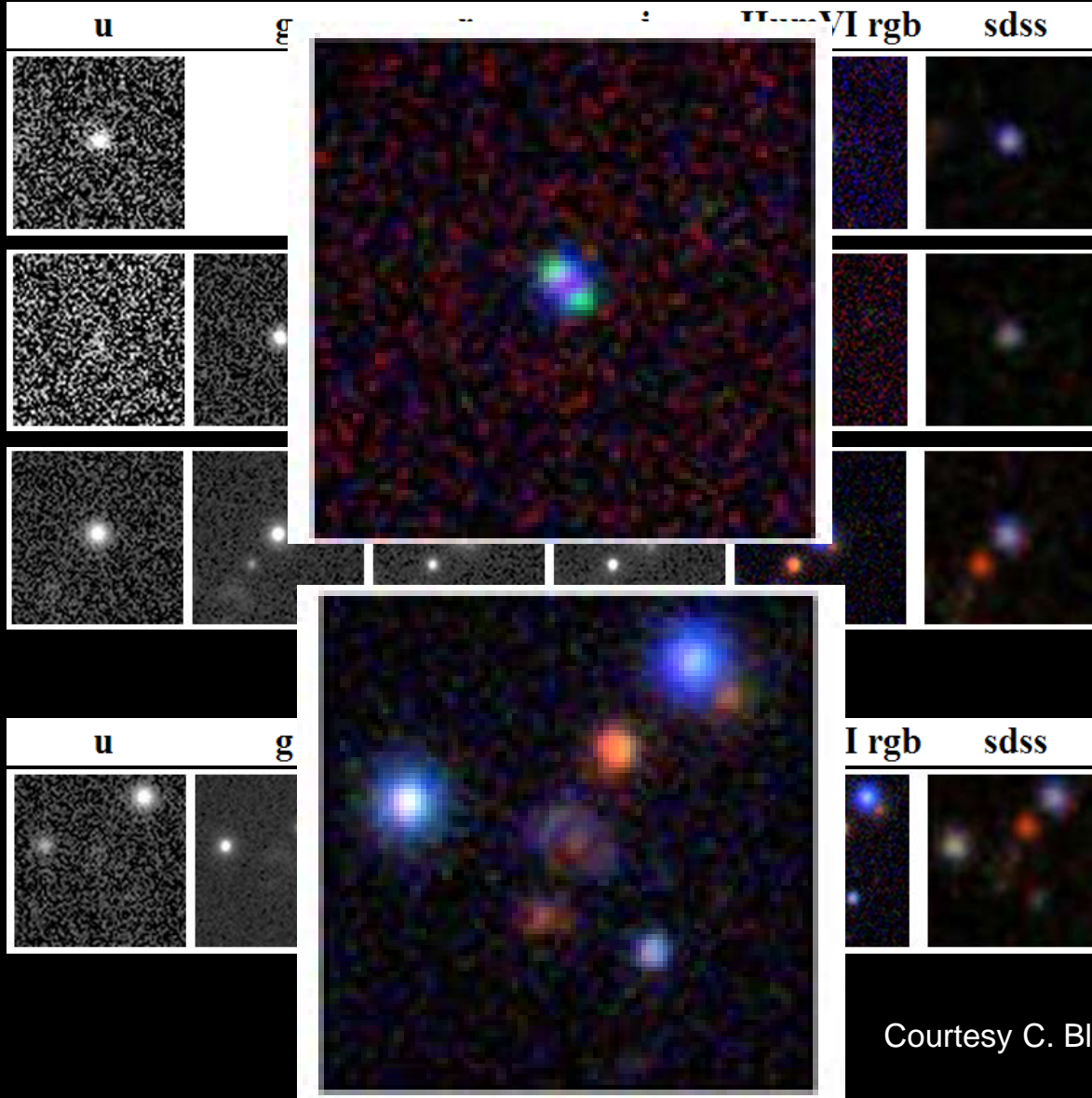
# High redshift QSOs



# Strongly-lensed QSOs



## QSO-galaxy lensing candidates



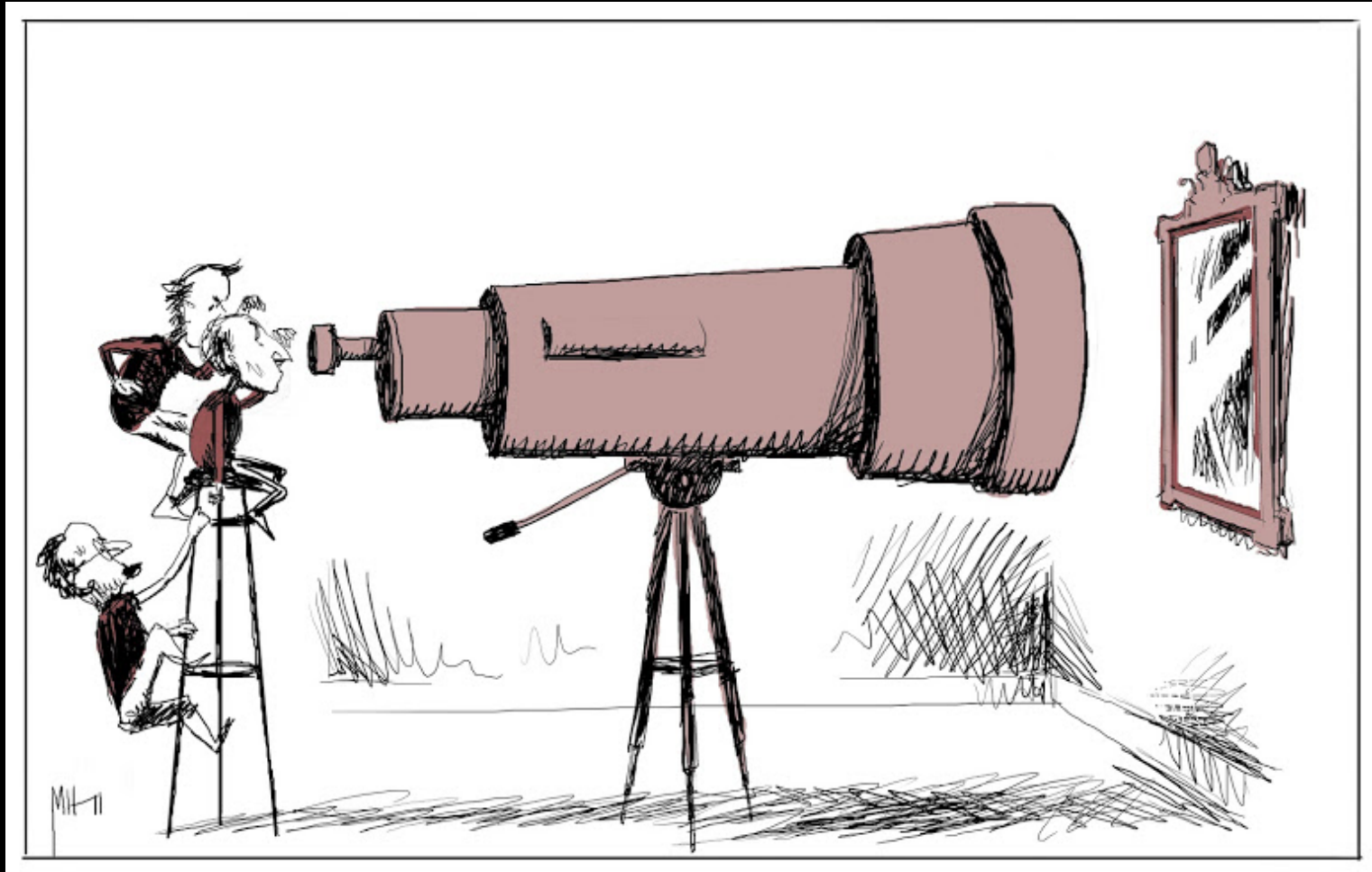
## KiDS expected harvest

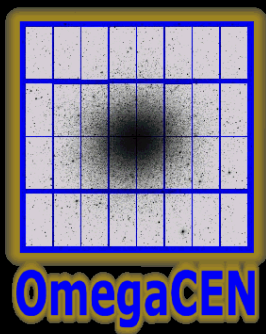
Strong lens type	2013	KiDS adds
QSO – galaxy	120	~600

Strong lens type	2013	KiDS adds
Galaxy – galaxy	~200	~1000

Courtesy C. Blokzijl

# Looking ahead...





# DFS expertise center



- **MUSE:** MUSE-WISE ready (see Brinchmann)
- **Euclid:** Mission Archive with ESAC, EXT data with Euclid-D
- **Gaia:** CU9 (archive) and visualization
- **MICADO:** Data Flow System Design lead (E-ELT)
- **Target+RUG:** Big Data R&D: visualization, databasing, storage (see Valentijn)

# Concluding remarks

- Static Archive -> “3D Datacenter”
  - closed loop archive & pipelines
- “Data about data” + CDM = everything
- Pool SW/HW + resources supporting diverse projects
- Astronomy’s (IT) future is bright = ESO-surveys, ESO-MUSE, ESA-Gaia, ESA-Euclid, ESO-E-ELT



# (Astro-)WISE in full depth

Experimental Astronomy  
All Volumes & Issues

Volume 35, Issue 1-2, January 2013

Topical Issue: Astro-WISE

ISSN: 0929-6460 (Print) 1573-0958 (Online)

**In this issue (19 articles)**

Original Article  
[The Astro-WISE database and information system](#)  
K. Begeman, A. N. Belikov, D. R. Boxhoorn, E. A. Valentijn  
[» Look Inside](#) [» Get Access](#) Pages 1-23



Original Article  
[Astro-WISE and Grid](#)  
Kor Begeman, Andrey N. Belikov, Fokke Dijkstra, Zheng Meyer-Zhao...  
[» Download PDF \(239KB\)](#) [» View Article](#) Pages 355-366

---

Original Article  
[Information systems playground—the target infrastructure](#)  
Andrey N. Belikov, Fokke Dijkstra, Hans Gankema...  
[» Download PDF \(455KB\)](#) [» View Article](#) **Pages 367-389**

